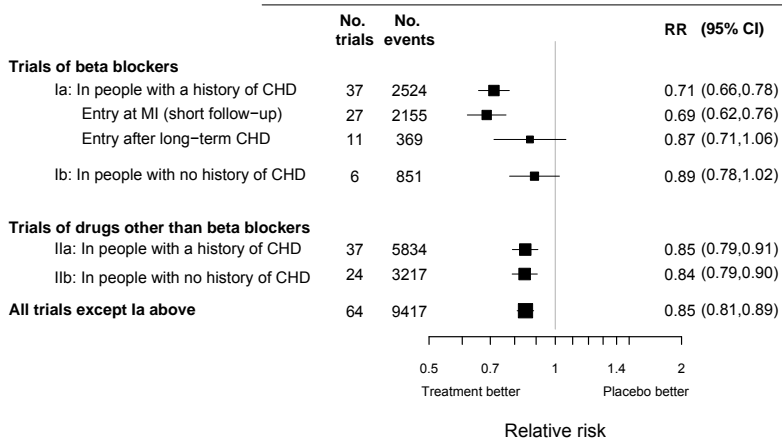


## CHD events



**Figure 1:** Relative risk estimates of coronary heart disease (CHD) events in single drug blood pressure difference trials of beta-blockers in people with a history of CHD, separately for trials in which participants had myocardial infarction (MI) on entry (with short follow-up) and had long-term CHD without a recent infarct, and in trials of beta blockers in other circumstances, and other drugs in any circumstances.

(The individual trial results and summary estimates are displayed in web-figures 1a-1e.)