



Working with Centre of the Cell

[Centre of the Cell](#) (CotC) is an award winning interactive science centre that delivers science shows and workshops, interactive games, public talks and a youth membership programme.

Through their public engagement menu programme researchers can select from a range of existing opportunities to co-develop public engagement activities based on active research, designed and delivered by the Centre of the Cell team, or suggest their own.

What do you need?

Funding

The amount of funding available will help decide the most appropriate activity and possible scale.

This could be costed from research grants, funded from internal sources, such as EDAs, or from projects in collaboration with external partners.

Be ready with an idea of your potential budget to give the best idea of what's possible from the start.

Planning

Consider which audiences you are interested in targeting, whether this be by age or school key stage, or those your research regards or effects.

What outcomes are you interested in from the project?
Are you looking to inspire future scientists, influence behaviours or collect more research data?

To discuss a project with
Centre of the Cell contact their
Director, Fran Balkwill.

f.balkwill@qmul.ac.uk

An Exciting Research Story

Projects must tie into CotC's top-level message, about the importance of cells and keeping them healthy, contained on page two of their menu document.

Consider how your research ties into this message, as well as what makes it interesting to others. Who does it effect, what are its practical applications beyond research and what is novel about the techniques used?

A Modest amount of Time

To ensure that your research is effectively integrated into their activities the CotC team require your input to help with content development and review.

The minimum amount of time this requires will depend on the activity, so have a clear idea of the time and resource you or a member of the project team can contribute from the initial stages.

For more information read the Centre of the Cell [menu document](#), visit their [website](#) or contact Fran Balkwill at f.balkwill@qmul.ac.uk.

What Do Centre of the Cell Offer?

Centre of the Cell's menu brochure features a range of existing options to develop projects, for which you can find brief descriptions below, however, these act as a guide and the team are always open to hearing new ideas for activities.



Big Question Lecture

4 available per year

These public lectures are developed in consultation with the CotC Youth Forum, made up of young people aged 14–19.

They require more input from the researcher than other activities but can be reused and updated to suit other audiences.

Watch an example lecture on Medicine in WWI [here](#).



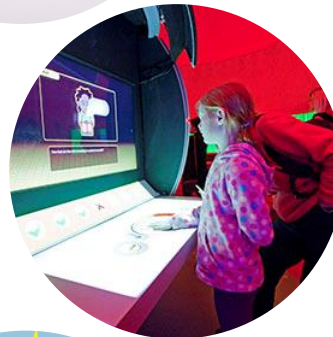
Trumps Card Game

1 available per year

Based on the popular 'Top Trumps' card game, this involves creating 30 cards based on a theme, such as cell types, that can be played by comparing facts on each card.



The Pod is home to CotC's unique interactive shows, featuring videos and interactive games in an immersive experience suspended above real research laboratories.



Nucleus Games

10+ available per year

The CotC 'Nucleus', located in the centre of the Pod, features interactive touch- screen games that can also be featured [online](#).



Website Games

30+ available per year

CotC can also design digital games freely available through their [website](#) and featured on screens around the perimeter of the Pod. They can also be turned into educational [apps](#) for smart devices.



Science Shows and Workshops

2 available per year

These [50-60 minute shows](#) involve interactive demonstrations and props, to encourage learning, led by CotC presenters and designed by the CotC Learning Team. They can be both performed on campus and taken out to schools.