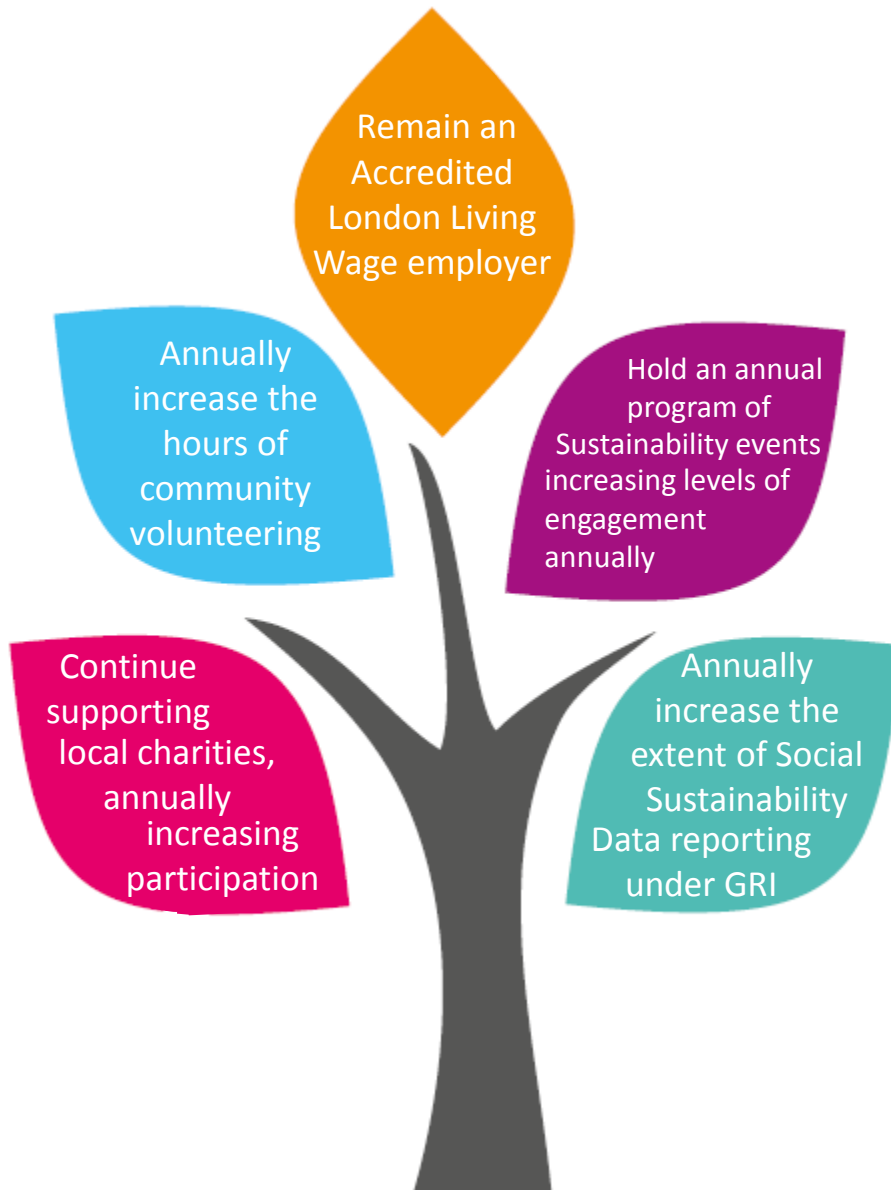




Our Social Contribution- Targets

Our main Social Sustainability Targets

The following figure summarises our targets, these will be reported on in the Annual Sustainability Report. They have been informed by the GRI G4 requirements and the QMUL stakeholder consultation process. These targets are reviewed annually for suitability and approved by the Sustainability Committee.



For more information visit the [QMUL website](https://www.qmul.ac.uk/sustainability) or email sustainability@qmul.ac.uk

