

# Environmental Sustainability Induction Session for Students

Dr Philip Tamuno  
Head of Sustainability



# Session Outline

- An overview of the main environmental risks
- Insight into Queen Mary's current environmental sustainability priorities
- Sign-posts to opportunities to become involved and make a difference



# Why Environmental Sustainability?



# Global Environmental Limits

Rising human population, pollution, food production, industrialisation and resource depletion have exponentially increased beyond the Earth's safe operating capacity.

# Global Environmental Risks

**Population growth** 7 billion to 8.5 billion by 2030 - pressures on food/fresh water

**Loading of atmosphere** with pollutants such as particulates and NOx

**Biodiversity loss** - 58% of species since 1970

**Oceanic change** - acidification, coral reef bleaching, plastic pollution

**Land-use change** - loss of forest, agriculturally productive land

**Climate change** - extreme weather, growing deserts, sea-level rise

**Linear economy** - leading to waste of materials and pressure on finite resources

**Growing incomes and less poverty** - but growing consumption



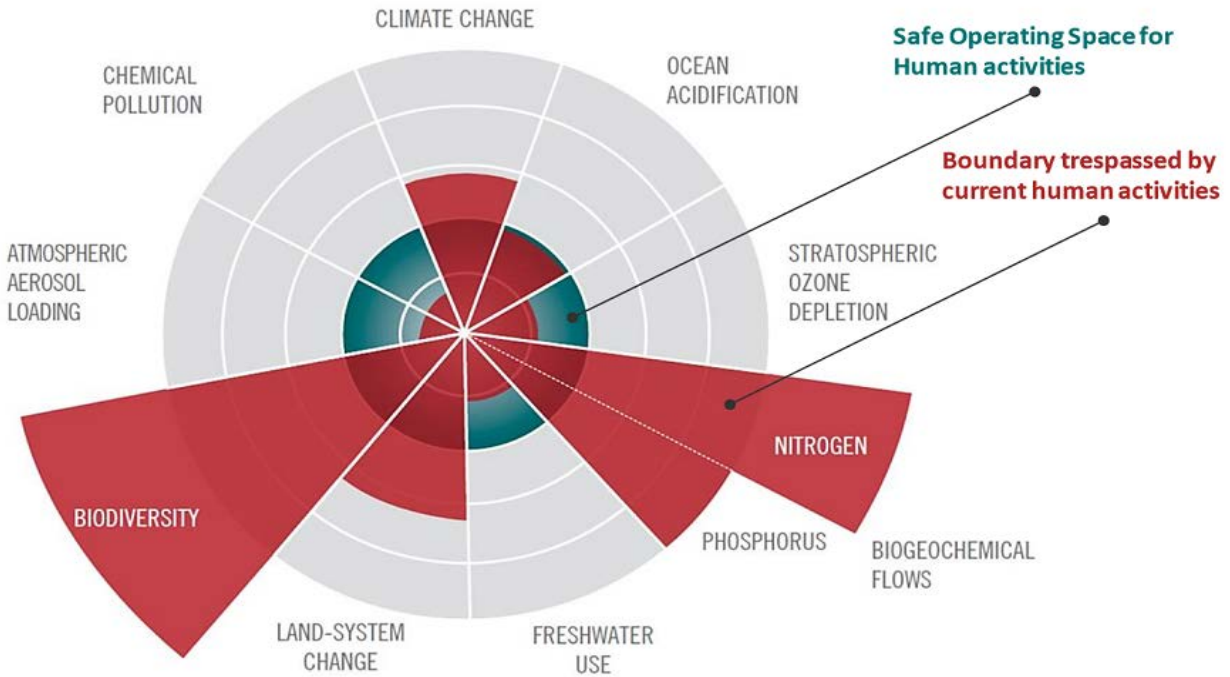
# Global Challenges and Risks

- 1 in 8 of all Global Deaths are attributed to air pollution (World Health Organisation)
- Plastics and aquatic pollution are endangering aquatic life
- Climate change is the most difficult challenge to human society
- Global biodiversity declined by 58% between 1970 and 2012
- Global material and resources use is projected to double by 2030 compared to 1900.





# Earth's Safe Operating Capacity



# Our Environmental Priorities





# Our Immediate Environmental Response

Our [Environmental Sustainability Action Plan \(2020 - 2023\)](#) and [Environmental Sustainability Policy \(2020\)](#) are the current frameworks on which we are responding to current and emerging global environmental risks and deliver our commitment to embed good environmental practices across all areas of our operation.

# Corporate Partnerships & Collaboration

We are currently a Corporate Partner of the Institute of Environmental Management and Assessment (IEMA), a member of the Environmental Association of Universities and Colleges (EAUC) and one of the participants of the EcoCampus Environmental Management programme. We are using these platforms to engage with like-minded organisation and to play our role in responding to current and emerging environmental risks.

# Immediate Climate Change Response

Our six-year 30% carbon reduction target against our 2018/19 baseline is one of our immediate responses to the global risks associated with climate change.

# Long-Term Climate Change Response

We are currently developing our heat decarbonisation plan and net-zero strategy. This plan and strategy will be our road map to becoming a net-zero University.

# QMUL: Environmental Opportunities

- Involvement in Our Environmental Sustainability Journey
  - Join our Environmental Sustainability Champion
  - Contribute to our Sustainability Committee
- Celebrate Annual World Environment Day (5 June)
- Supporting the UN Decade on Ecosystem Restoration (2021-2030)
- Free Cycle Repair and Services
- Environmental Awareness Campaigns



# Sustainable Development Module

We currently offer all Queen Mary's Undergraduates and Postgraduates a free online continue professional development (CPD) module on sustainable development.

For details of this course, visit <https://www.qmul.ac.uk/about/sustainability/cpd-training/ecocampus-sustainable-development-course-for-students/>

Email: [sustainability@qmul.ac.uk](mailto:sustainability@qmul.ac.uk)

# IEMA: Career and Student Network

One of the benefits of being a corporate partner of IEMA. IEMA has offered Queen Mary three environmental sustainability career and network sessions during the 2021/22 academic year.

Let us know if you are interested in these sessions.

Email: [sustainability@qmul.ac.uk](mailto:sustainability@qmul.ac.uk)

# GreenMary Community Garden

We will be providing year-round opportunities for all Queen Mary students to be involved in the allotments within our GreenMary Community Garden.

For details of our biodiversity and ecological enhancement commitment, visit

<https://www.qmul.ac.uk/about/sustainability/operations/biodiversity-and-ecological-enhancement>

Email: [sustainability@qmul.ac.uk](mailto:sustainability@qmul.ac.uk)







# Sustainability Leadership Scorecard: Silver

- Leadership and Governance: We attained Gold Status
- Estates and Operations: We attained Gold Status
- Partnership and Engagement: We attained Silver Status
- Learning, Teaching and Research: We attained Silver Status



# Performance: EcoCampus Gold Award

Attaining EcoCampus Environmental Management System (EMS) Gold certification award in July 2021. As part of our commitment to embed good environmental practices across all areas of our operations; we are working towards attaining ISO 14001:2015 EMS certification and EcoCampus Platinum award by July 2022.

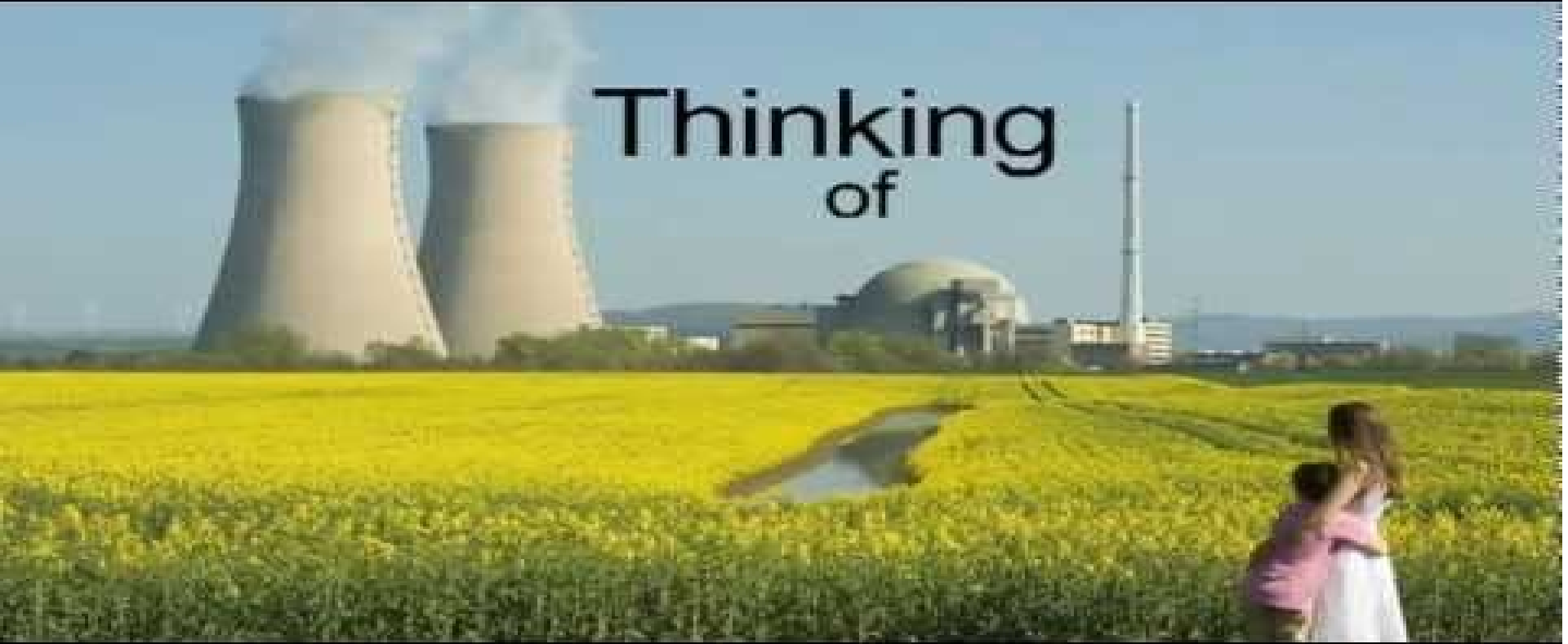
For further information of how to get involved in our environmental journey

Email: [sustainability@qmul.ac.uk](mailto:sustainability@qmul.ac.uk)



# Make a Difference





Thinking  
of

# Make a Difference: Climate Change

- Switch-off lights before leaving your room
- Switch-off lights in empty lecture and study rooms
- Switch-off the heating if your window is open
- Travel Better: Reduce your mileage
- Avoid water wastage
- Reduce Waste and recycle
- Eat less meat and more plant based diet



# Make a Difference: Resource Efficiency

- Avoid water wastage
- Reduce waste, reuse and recycle
- Go paperless & reduce paper wastage
- Use reusable drink cups
- Avoid food waste



# Make a Difference: Environmental Responsibility

- Promote biodiversity and support ecological conservation
- Support national parks and other protected areas
- Eat and shop local
- Avoid single use plastics
- Appropriately dispose of waste materials



# Further Information & Support

Email: [sustainability@qmul.ac.uk](mailto:sustainability@qmul.ac.uk)

Visit: [www.qmul.ac.uk/about/sustainability](http://www.qmul.ac.uk/about/sustainability)





# Thank you



Queen Mary  
University of London

