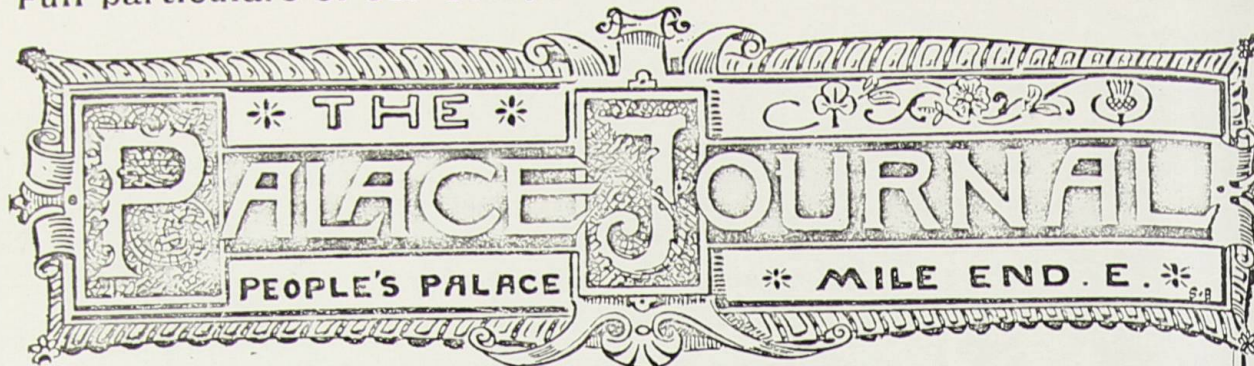


Full particulars of our Competitive Prize will be found on page 203.



VOL. VI.—No. 147.]

WEDNESDAY, SEPTEMBER 3, 1890.

[ONE PENNY.]

THERE IS  
No Nourishment in Tea or Coffee  
BUT  
PLENTY IN COCOA,

ESPECIALLY IN  
**VAN HOUTEN'S**

WHICH  
*Utilises in the highest possible degree*  
ALL THE FLESH-FORMING ELEMENTS  
WHILE  
DEVELOPING THE FLAVOR AND AROMA.  
ORIGINAL PATENTORS.

This Cocoa solely used at the People's Palace.

## DR. ROOKE'S SOLAR ELIXIR

Is the most effectual HEALTH RESTORER recorded in the history of medicine. It is above all things serviceable in cases of weakness and exhaustion. As a medicine it far surpasses any known preparation, hence it has a most marvelous effect on all nervous complaints, whether arising from overwork or mental anxiety.

Sold in Bottles at 2s. 9d., 4s. 6d., and 11s. each,

by all Patent Medicine Vendors, or direct from

DR. ROOKE,  
SCARBOROUGH,  
ENGLAND.

A BOON TO RICH & POOR ALIKE!

NO FAMILY SHOULD BE WITHOUT THEM.

FIFTY YEARS OF UNPRECEDENTED SUCCESS.

## DR. ROOKE'S ORIENTAL PILLS.

Recommended by Sir HENRY HALFORD, Bart., M.D., formerly President of the Royal College of Physicians, London, as being invaluable for Indigestion, Flatulence, Bilious, and Liver Complaints, Sick Headache, and all affections and irregularities of the Bowels.

Never fail as a Special Remedy for Female Complaints.

Composed of the FINEST DRUGS only. Full Directions for use are wrapped round each box. Sold in Boxes at 1s. 11d. and 4s. 6d. each.

Can be obtained from all Chemists, Patent Medicine Vendors, and Stores throughout the World, or direct from

DR. ROOKE, SCARBOROUGH, ENGLAND.

## CROSBY'S BALSAMIC COUGH ELIXIR

Is specially recommended by several eminent Physicians. It is used with the most signal success for Asthma, Bronchitis, Coughs, Influenza, Consumption, Consumptive Night Sweats, Spitting of Blood, Shortness of Breath, and all affections of the Throat and Chest.

Sold in Bottles at 1s. 11d., 1s. 9d., 4s. 6d., and 11s. each.

## FROOMS & Co.

239, Commercial Road, London, E.

Estab. 1854.] 3 Doors from Philpot Street. [Estab. 1854

HIGH-CLASS  
Pianoforte Makers

WE are now offering High-Class Pianofortes for the remarkably low sum of 2/6 per week, sent home immediately, carriage free. No deposit required.

## NEW CASH LINE.

12 Guineas.—Iron frame, check action, seven octaves, handsome walnut and gold case and sconces; warranted for 10 years; the cheapest instrument ever offered to the public. Other classes equally cheap.

AMERICAN ORGANS & HARMONIUMS

From 5s. per Month.

EVERY INSTRUMENT WARRANTED.

Tunings, Repairs and Removals AT LESS THAN USUAL CHARGES.

## NOW OPEN.

New Showrooms—

370, BARKING ROAD, E.

ESTABLISHED 1851.

**BIRKBECK BANK,**  
Southampton Buildings, Chancery Lane.

THREE per CENT. Interest allowed on DEPOSITS, repayable on demand. TWO per CENT. on CURRENT ACCOUNTS, calculated on the minimum monthly balances, when not drawn below £100. STOCK, SHARES, and ANNUITIES purchased and sold.

## SAVINGS DEPARTMENT.

For the encouragement of Thrift the Bank receives small sums on deposits, and allows interest at the rate of THREE PER CENT. per annum, on each completed £1. The interest is added to the principal on the 31st March annually. FRANCIS RAVENSCROFT, Manager.

HOW TO PURCHASE A HOUSE FOR TWO GUINEAS PER MONTH, OR A PLOT OF LAND FOR FIVE SHILLINGS PER MONTH, with immediate possession and no Rent to pay. Apply at the Office of the BIRKBECK FREEHOLD LAND SOCIETY.

The BIRKBECK ALMANACK contains full particulars, and may be had, post free, on application to FRANCIS RAVENSCROFT, Manager. Southampton Buildings, Chancery Lane.

East London Banjo Studio.

**C. W. REDWOOD,**

MANUFACTURER AND IMPORTER OF

MUSICAL INSTRUMENTS,

391F, Mile End Road,

Opposite Burdett Road.

## SPECIAL NOTICE.

People's Palace Students will be served with Strings and Instruments at Specially Reduced Prices.

PIANOS AND ORGANS ON SALE OR HIRE.

**MADAME TUSSAUD'S**  
ADJOINING BAKER STREET STATION.

THE MOST POPULAR EXHIBITION in LONDON

Containing over 400 Portrait Models of the Celebrities of all Nations and ages, including—

H. M. STANLEY and EMIN PASHA.

FINEST COLLECTION OF

NAPOLEONIC RELICS IN THE WORLD, and of the

FRENCH REVOLUTION.

**MUSIC ALL DAY.**

FULL ORCHESTRA. LADIES' BAND. ORGAN RECITALS, etc.

**CHAMBER OF HORRORS** containing the most notable criminals of the century, including—

Richard and George Davies, the Crewe Murderers,

Also BERRY, the HANGMAN.

New Dining, Reading and Smoking Rooms.

Admission, 1/-; Children under 12, 6d. Yearly Tickets, 10/6.

MODELLER JOHN TUSSAUD.  
EDWIN J. POYSER Managing Director.

 **SUN**

**LIFE OFFICE**

For Assurances

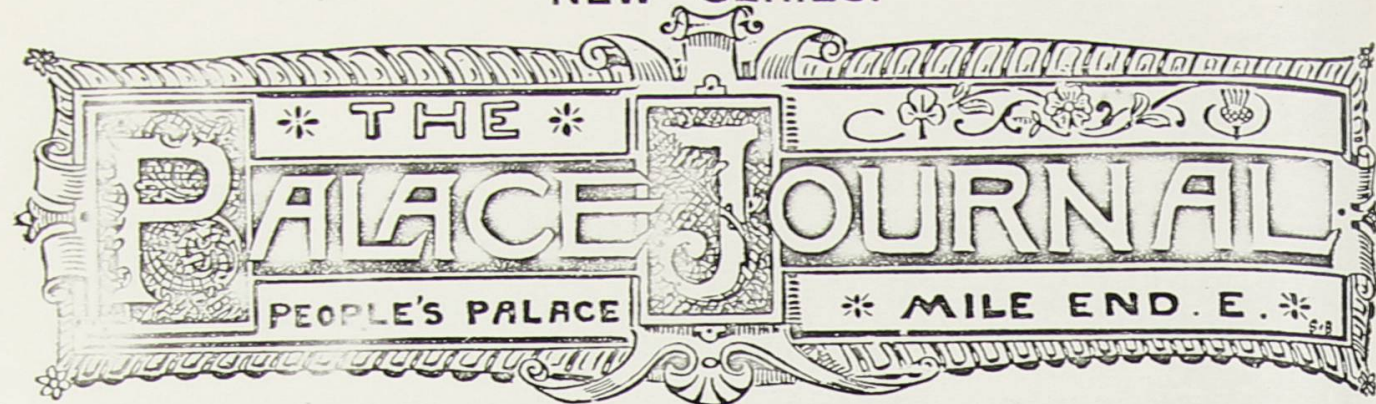
"UNDER COST PRICE."

Apply for NEW OPTION PROSPECTUSES to—

HARRIS C. L. SAUNDERS, General Manager,

63, THREADNEEDLE STREET, E.C.





VOL. VI.—No. 147.]

WEDNESDAY, SEPTEMBER 3, 1890.

[ONE PENNY.]

### Notice to Readers.

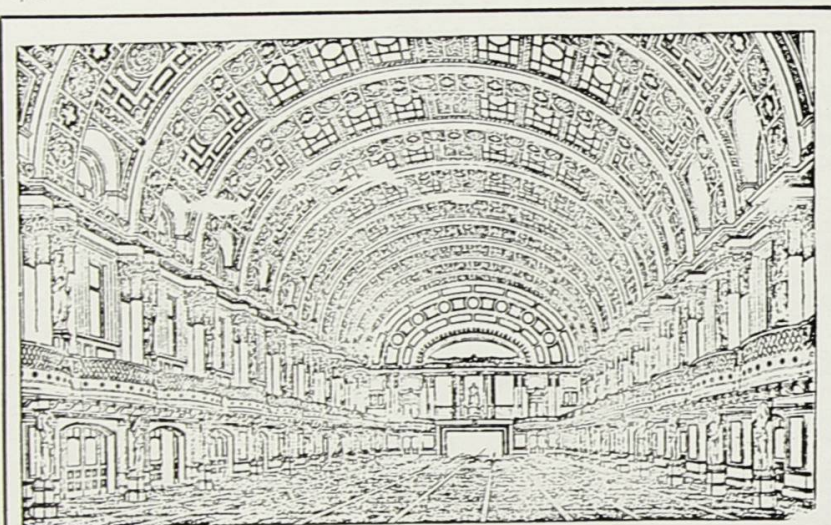
We should be glad if our readers would use their influence in getting their newsagents from whom they procure their books, to display contents bill. This is one of the best ways of helping us to raise the circulation. Should your bookseller say he cannot procure one, kindly send us a postcard with his address, and we will at once forward a supply.

The *Palace Journal* can be obtained from the following newsagents:—Hind, Mile End Road, near Bancroft Road; Sullivan, 368, Mile End Road; Mears, Mile End Road, near Canal; Lamplough, Harford Street.

All communications must be addressed to the Editor of *The Palace Journal*, and may be left at the Office in the Editor's box not later than 6 p.m. Monday.

The *Palace Journal* will be sent post free as soon as published to any address in the United Kingdom for 6/- a year, or 1/6 a quarter. Subscriptions must be prepaid. Volume V. is now ready, neatly bound in cloth, 4/6. Covers for binding, 1/6.

CONCERTS  
AND  
Entertainments  
IN THE  
QUEEN'S HALL  
EVERY  
MONDAY  
AND  
SATURDAY,  
At 8 p.m.



THE QUEEN'S HALL.

ORGAN  
RECITALS  
IN THE  
QUEEN'S HALL  
NEXT  
SUNDAY,

At 12.30, 4 and  
8 p.m.

Admission Free.

### COMING EVENTS.

THURSDAY, September 4th.—Library open from 10 to 5 and from 6 to 10, free.—Newspapers may be seen from 8 a.m.—Swimming Bath open.

FRIDAY, September 5th.—Library open from 10 to 5 and from 6 to 10, free.—Newspapers may be seen from 8 a.m.—Choral Society.—Swimming Bath open.

SATURDAY, September 6th.—Promenade Concert by People's Palace Military Band, in Queen's Hall, at 8.—Vocalists, Madame Barter and Mr. T. W. Page.—Library open from 10 to 5 and from 6 to 10, free.—Newspapers may be seen from 8 a.m.—Chess Club Practice, at 7.—Lawn Tennis Club Practice, at 3.—Cycling Club.—Swimming Bath open.

SUNDAY, September 7th.—Organ Recitals, at 12.30, 4, and 8.—Library open from 3 till 10, free.—Swimming Bath open, 6 a.m. to 10 a.m.

MONDAY, September 8th.—Campanological and Vocal Entertainment by the Royal Holdfast Hand-Bell Ringers at 8, in Queen's Hall. Admission Twopence.—Library open from 10 to 5 and from 6 to 10, free.—Newspapers may be seen from 8 a.m.—Swimming Bath open.

TUESDAY, September 9th.—Library open from 10 to 5 and from 6 to 10, free.—Newspapers may be seen from 8 a.m.—Choral Society.—Swimming Bath reserved for Ladies, open 6 a.m. to 10 p.m.

WEDNESDAY, September 10th.—Library open from 10 to 5 and from 6 to 10, free.—Newspapers may be seen from 8 a.m.—Swimming Bath open.



### WHAT THE CLUBS ARE DOING.

NOTICE TO SECRETARIES.—Club announcements should be addressed to the EDITOR, and not to any person by name. It should be remembered that the earlier these reach us, the greater likelihood they have of being inserted entire, and every endeavour should be made to ensure their delivery at the Palace by MONDAY MORNING.

#### OLD BOYS' TECHNICAL SCHOOL CRICKET CLUB.

This Club on Saturday, August 30th, played the return match with the Grafton C.C., on the Palace ground, Wanstead.

The visitors started the batting, but were soon disposed of with a score of 28. The Old Boys now commenced batting, and made a slightly longer stand, but were ultimately dismissed for 42. Going in the second time, the visitors greatly improved on their first score, and added another 50 runs before leaving the wickets. The Old Boys taking the wickets for the second time, got 28 together for 5 wickets, when time being called, it was agreed to decide the result by the first innings. The Old Boys, therefore, winning by 14 runs. Great credit is due to Bissett and Gurr for the manner in which they handled both the batting and bowling. The following are the scores:—

GRAFTON.		Second Innings.	
First Innings.		run out	
Davis c and b Bissett	2	b Gurr	0
Gilding b Gurr	1	b Gurr	8
Thomas c and b Gurr	5	c and b Bissett	5
Goodwin c and b Gurr	5	c and b Bissett	0
J. Gilding c and b Bissett	2	run out	1
Bradford b Bissett	6	b Gurr	6
Daynes c and b Bissett	4	b Gurr	4
Solomons b Gurr	0	b Bissett	9
Lakeman not out	0	b Bissett	11
H. Goodwin c and b Bissett	0	run out	2
Harding c and b Bissett	0	not out	1
Extras	2	Extras	10
Total	27	Total	57

OLD BOYS.		Second Innings.	
First Innings.		st Goodwin	
Toyne c and b Davis	0	b Davis	3
Clements b Davis	5	st Davis	0
Birkett b Davis	0	b Davis	0
Bissett b Goodwin	3	b Davis	2
Gurr not out	16	not out	16
Pocknell c and b Davis	0	st Davis	0
Seabright c and b Davis	7	st Davis	0
Fox played on	0	Extras	7
Harper b Davis	1	Total	28
Extras	10		
Total	32		

#### PEOPLE'S PALACE MILITARY BAND.

Conductor—MR. A. ROBINSON.

Extract from an Evening Paper, August 25th.

#### PROMENADE CONCERTS IN THE EAST-END.

One of his rambles the *Star* man turned into the People's Palace to a Promenade Concert given by the Members of the People's Palace Military Band. Two vocalists—Miss Kate Cherry and Mr. J. A. Bovett—lent their assistance, and their songs were very well received. The band is composed solely of amateurs who have been instructed in their different instruments at the Palace, and their performances were very meritorious. Similar concerts are held every Saturday evening, and people living in other parts of London may do well to go." The concert on Saturday last was even more successful

than the preceding one as far as the numbers who have attended these concerts are concerned; the pieces by the band being well rendered, the post horn galop (with post horn obligato by Mr. Robinson, Conductor) demanding an enthusiastic encore. We give another performance on Saturday next, also on the 20th of September. Members are particularly requested to attend all rehearsals as we have a lot of new music in rehearsal.

T. JARVIS, Junr., Hon. Sec.  
P. SHELLEY, Assistant Hon. Sec.

#### PEOPLE'S PALACE RAMBLING CLUB.



LAST Saturday a party of twenty-four participated in the boating ramble. We met at Radley's Boat-house, Lea Bridge, about 2.30 p.m., but did not leave there until 2.55 p.m. The weather was all that could be expected, and as a friend of mine used to say, "it was a fine day to spend a sovereign." We had no mishaps of any kind, and enjoyed the row very much. Landing just this side of Pickett's Lock, Edmonton, we took the field path leading across the toll bridge and on to Chingford, coming out just

alongside the old church, and soon afterwards we arrived at Mrs. Nunn's, where tea was prepared, which one need hardly say was much enjoyed after the exercise. Returning as we had come, the boats were lit up with Brock's lanterns, and presented quite a picturesque appearance in the silvery moonlight, and but for the occasional mists we passed through, we were quite warm enough. Several songs were sung, and one of our party treated us to some violin music; altogether we had a most enjoyable outing.

Saturday, September 6th. Carshalton-on-the-Hill. Trains, 1.50 and 2.37 from London Bridge (Spottiswoode Institute Annual Excursion). Sports, tea, dancing, etc. Tickets (including railway fare and tea), 2s. 3d.; ladies, 1s. 9d.; can be obtained on Friday evening at the Committee Meeting, 8.30 p.m.

A. MCKENZIE, } Hon. Secs.  
W. POCKETT, }

#### PEOPLE'S PALACE CYCLING CLUB.

Lamps to be lit to-morrow (Thursday) at 7.39, and on Saturday at 7.34.

The fight between the champions is over; and the wiry Cornishman has left in the rear his Essex adversary.

The plucky riding of V. Dawson on Thursday last came as a surprise to most of the racing division. After being left by Howard and Moyle nearly half a lap behind at half distance, he gradually reduced the distance, and at the twenty-ninth lap was leading.

J. Howard was not seen at his best. His visit to Hastings (the air of which is very relaxing) has not improved his pace, as his subsequent performances show.

I must compliment O. J. Stevens on his pluck for starting on Thursday, and his example ought to have been followed by more of the younger division. He had been working at the lathe from Wednesday morning until he left for Paddington on Thursday evening, without paying his respects to Somnus.

The following conundrum was asked me on Thursday last, and as I am a bad hand at guessing, perhaps some of the Palace Members, who also belong to the Millwall A.C., can oblige. It is this: When will the track at Millwall be equal to that of Paddington?

The officials on Thursday last were:—Judge and timekeeper, D. Turner, holder of the majority of records for tricycles; starter and lap scorer, J. Burley; clerks of the course, H. Bright and R. Peel.

There were thirty-five laps to be travelled, and the leaders at the different laps were as follows:—

1st lap	..	..	E. Ransley.
2nd	..	..	V. Dawson.
3rd	..	..	E. Ransley.
4th-5th	..	..	V. Dawson.
6th	..	..	E. Ransley.
7th-8th	..	..	V. Dawson.
9th-28th lap	..	..	M. Moyle.
29th-30th	..	..	V. Dawson.
31st-32nd	..	..	M. Moyle.
33rd-34th	..	..	V. Dawson.
35th	..	..	M. Moyle.



Placing the men in order of merit according to their position on passing the tape at each lap, the result is as follows:—

M. Moyle .. .. .	147 points.
V. Dawson .. .. .	135 "
J. Howard .. .. .	118 "
E. Ransley (retired) .. .. .	27 "
O. Stephens (retired) .. .. .	4 "

Before the race was started, I am informed that J. Howard lodged a protest with the Secretary against pneumatic tyres being allowed to compete.

Being a championship race, the Committee should base their decision on the N.C.U. Championships. If the Executive of the N.C.U. could not justly bar pneumatic-tired machines in the English championships on the same track, I cannot myself see how the Executive of the Palace C.C. can do otherwise than follow their example.

An ordinary has the same advantage over a solid-tired safety as a pneumatic has over an ordinary; and therefore the safety riders of last year had just as good grounds for protesting against riders of the ordinary as this year the riders of the ordinary have of protesting against riders of pneumatic tyres.

A championship is the best man and machine at the distance.

A member of the Granville C.C. informed the Secretary that their club journeyed to Broxbourne Gardens last Saturday in order to support the Garden Party of the Palace C.C. The Secretary wishes to thank them for their kind intention, and begs to inform them that the date and place on the fixture card is a printer's error, and that he will be pleased to see them on September 20th at the "Royal Forest Hotel," Chingford.

Last Saturday a very enjoyable run to Ongar was carried out. The muster of the Club for the Saturday runs is gradually increasing, and before many days have elapsed the Captain hopes to see the roll as large as before the holidays began.

E. Toole has asked me to thank Mr. Flanders for the trouble he took to rig up a jury saddle out of cigar boxes on the occasion of his racing saddle breaking.

The Secretary will be pleased to receive the value of the championship tickets as soon as possible. Those Members who could not leave business to attend are respectfully informed that the value will be more acceptable than the pasteboard.

Next Thursday the run will be to the "Wilfrid," when every Member is requested to put in an appearance.

On Saturday next the last run to Kent takes place, Foot's Cray being the destination. Kent now is at its best, and the Captain will be well advised if he makes the start as soon after four as possible, so that, after an early tea, a few of the Kentish lanes can be explored.

Another batch of Members set out on Saturday last for the Portsmouth trip. The glowing accounts of the surface of the Portsmouth road have been more than they could resist. The report I have received from the tourists, led by Messrs. Farrant and Cutting, shows good business. Amongst other places visited were Portsmouth, Southsea, Ryde, Brading, Sandown, Shanklin, Ventnor, Freshwater, Yarmouth, Newport, Carisbrooke, Cowes, Southampton, Christchurch, Bournemouth, and Salisbury.

The Secretary of the Unity has written asking for the inter-club run on September 13th to be altered from Loughton to Abridge. Tea at the "Blue Boar." Members are requested to make the alteration on their run cards.

The racing division, with the exception of V. Dawson, who obtained the first prize at Leyton, were unfortunate on Saturday. In the final of the Mile at Beckton, three out of the six competitors were Members of the Palace C.C., but they failed to catch the long mark men, and finished fourth, fifth, and sixth.

J. Howard, at Leyton, only obtained fourth place in his heat.

Tickets for the Garden Party can still be obtained from H. Bright, 68, Lichfield Road; H. Farrant, 108, Grove Road; W. Marshall and A. McKenzie, of the Rambling Club; and J. Burley, Hope Lodge, Walthamstow.

AJAX.

## JUNIOR SECTION.

### PEOPLE'S PALACE JUNIORS CRICKET CLUB.

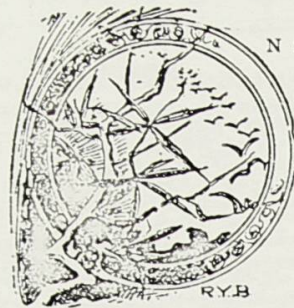


N Saturday last the Doves met the Juniors at Victoria Park to play the return match. Our Captain winning the toss decided to put them in first, the play being very poor, 7 wickets being down for 2 runs, their best scores being Serjeant, Paul, and Horton respectively 15, 6, and 6, making 27 out of 34. The Juniors then started batting, Munns and Clarke having the best scores of 20 and 7 out of a total of 37 runs, thus beating the Dove by 3 runs. The following are the scores:—

DOVE.		PEOPLE'S PALACE JUNIORS.	
Paul run out .. .. .	6	Mahoney b Paul .. .. .	0
Stamp c and b Harvey .. .. .	1	Clark b Atkiss .. .. .	7
Downs c and b Harvey .. .. .	1	Newport c and b Stamp .. .. .	1
Smith c Munns .. .. .	0	Munns not out .. .. .	20
Hanson c Munns .. .. .	0	Harvey b Stamp .. .. .	1
Dorling c and b Harvey .. .. .	0	Branch b Stamp .. .. .	2
Chapple b Munns .. .. .	2	Sanderson c and b Paul .. .. .	0
Atkiss c and b Munns .. .. .	0	Jesson b Stamp .. .. .	0
Horton b Harvey .. .. .	6	White c and b Atkiss .. .. .	0
Serjeant (sub.) not out .. .. .	15	Loopee run out .. .. .	0
Stamp b Harvey .. .. .	0	Lewis b Paul .. .. .	2
Extras .. .. .	3	Extras .. .. .	4
Total .. .. .	34	Total .. .. .	37

T. J. SANDERSON, Hon. Sec.

### PEOPLE'S PALACE JUNIOR RAMBLING CLUB.



N Saturday last we rambled to Loughton, leaving by the 3.20 train from Burdett Road Station for Loughton, from where we walked to Waltham, via the "Robin Hood," stopping on the way to watch the rifle practice of the 1st Hertfordshire Volunteers, returning by a circular route through the forest to Loughton, where we had tea, after which we started for the station, where we arrived in time to catch the 8.20 train.

Ramble on Saturday to Highgate Woods. Meet outside the Palace at 3 o'clock. J. S. BURCHILL, Hon. Sec.

## CLASS NOTES.

### VIOLIN CLASSES.

Mr. W. R. Cave's prize Violin Bow has been awarded to Mr. Flawn. The other competitors were Miss Smith, Mr. Button, Mr. Pearse, Miss Cohen, Mr. Wilson, Mr. Hartman, Master Cohen. Another competition will take place next session.



## CORRESPONDENCE INVITED.

### A PEOPLE'S PALACE PARLIAMENT.

[We have received the following letter from a correspondent, and our readers who would be willing to form a society as above, will please intimate the same, when a meeting will be arranged for the purpose of bringing the matter to a satisfactory conclusion.—Ed. P. J.]

25, Hampton Road, Forest Gate, E., 30th August, 1890.

DEAR SIR,—I should be most glad to assist in the formation of a Local Parliament or Debating Society, such as your correspondent suggests. This seems the necessary complement of our Literary and Elocution Classes, and I think it could not but be successful among so large a body of Students as we have at the People's Palace. Indeed, many Students besides myself have expressed surprise and disappointment in finding that the Palace was without such an institution.

Yours truly, W. F. LOVELL.

We have received a parcel of sketches from a correspondent which are executed in pencil; we would be glad if contributors would in future send in their sketches done in ink on white card.

## THE LADIES' COLUMN.



### DRESS.

RUMOUR comes to us, which we trust will prove to be only a rumour, concerning the probable return to fashion of the crinoline. It is rather hard to be likely to be turned into walking balloons just after having succeeded in discarding that most deforming of fashions, the dress-improver, but those who wish to be "chic" may have to follow this caprice of *La Dame Mode* ere long.

Yet on the other hand some of the best dressmakers say we are to become more like pillar-posts than ever. Let us take a medium course, and cleave to that which is most suitable and comfortable. Brown, as we said before, is to be the colour this season; a nice, warm reddish brown, which suits most complexions.

MILLINERY.—The hat *par excellence* is the toreador shape in felt, straw, or buckram, covered; it does not require much trimming, and is becoming to most faces.

Feathers are faster and faster becoming the rage, and are certainly very tasteful and pretty were they not so perishable.

Bonnets one almost requires the aid of glasses to discover on the head, but we expect the weather will alter this ere long. Fashions that engender neuralgia and headache are not likely to hold their own in our capricious climate for long.

All of us are glad to get a serviceable dress cheaply; therefore let me recommend Mr. Duncan Smith, in Oxford Street, near Tottenham Court Road, where for 14s. 6d. one can get a nice dark cloth skirt, and for another 14s. 6d. can have the bodice nicely made and finished, which last is a great thing; moreover, it fits well and looks nice.

Physical education is becoming an important factor in the lives of most young people now, and is, moreover, attracting a good deal of attention. Let me draw my reader's notice to an article in the *Princess* for August 30th, on *Athletic Womanhood*.

The Empress of Austria is about to publish a book. Nowadays the ranks of authoresses are being increased by numbers of royal and aristocratic ladies.

A lady has just been nominated to be a Poor Law Guardian in Lambeth, S.E.

Madame Sarah Bernhardt, whilst playing the rôle of Cleopatra, is to appear in five dresses, and these are to cost £1,200. Truly the great tragedienne and disciple of Rachel delights in lavish expenditure. This lady is, moreover, a most accomplished artist and sculptress, and does most excellent work.

In America ladies have struck out a new line for themselves in stylish bathing costumes. Certainly we have ample room for improvement on those usually seen adorning the persons of bathers at the seaside; but the Americans, in some cases, go in for something between a ballet dress, gymnasium costume, and the ordinary and hideous garb; they, however, succeed in looking picturesque, in which particular we may take a lesson.

Fencing was practised by ladies as early as 1787, when a match between a lady and Mr. de St. George was held before the then Prince of Wales and the most eminent fencing masters of the day.

A deaf and dumb lady has passed all the examinations of fine arts in Paris. This is an achievement she may well be proud of, and is an encouragement to others who see what may be done under physical difficulties.



H.R.H. THE PRINCESS OF WALES.

## REVIEWS.



ASSELL'S MAGAZINE for September has an interesting article on "Patchwork, Past and Present," which should be read by all artistic needle-workers.

The *New Review* for September has an article on "Indian Child Marriages," which should not be missed.

A lady has been engaged as organ recitalist at the Edinburgh Exhibition for the last week.

Another lady has carried off a prize for extemporising on the organ at the Paris Conservatoire.

In the *Leisure Hour* for September will be found an article about the higher education of girls in America.

Last month we had a long paper on "Domestic servants" in one of the leading reviews.

In the September number of the *English Illustrated* is another article by the Hon. Maude Stanley, whose words are always worth listening to.

A biographical notice of the authoress of the popular work, "Uncle Tom's Cabin," will be found in the *Sunday Magazine*, and is well worth perusal.

## CORRESPONDENCE.

NOTICE.—On opening our column for correspondence, we desire to make known that all communications will have careful and prompt attention, and everything will be done to make it a means of supplying information required to the satisfaction of correspondents.

MAX.—You will find a full answer to your query in the pages of the first number of the *East London Magazine*, August, 1890. But in case this is unobtainable, I append information required. Stowe, the chronicler of London, tells us that the hamlet of Whitechapel was called "Villa beatæ maræ Matfeleon," and in Timbs' *London* we find that this church was a chapel of ease to Stepney, Matfeleon being derived from Matfel in Hebrew, signifying a woman recently delivered of a son. Stowe has it that a number of housewives of the neighbourhood set upon a Frenchman or Breton of that name, and killed him for having betrayed the kindness of his hostess by murdering and robbing her. But the name dates back to 1428, and no really satisfactory conclusion as to its origin has been decided on by either Timbs or Stowe.



**GEORGE HUNT'S**  
 Old Established High Class  
**PROVISION WAREHOUSE,**  
 WHOLESALE & RETAIL,  
**108 & 109, WHITECHAPEL RD., E.**  
 (Opposite the London Hospital.)

Go To **Gapp's**  
**STORES FOR HERBS**  
 AND  
**HERBAL MEDICINES,**  
 104, GREEN STREET, VICTORIA PARK.  
*Ten minutes' walk from the Palace, near Globe Road Station.*  
 Eyesight Tested and Glasses to suit the sight from 53d.

**W. WRIGHT,**  
 Photographer.  
 NEW STUDIOS:  
**422, MILE END ROAD.**  
 Opposite People's Palace.



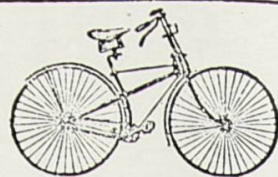
**THE ALDGATE**  
**TURKISH BATHS.**

J. & H. NEVILL.

Gentlemen—44, High St., Whitechapel.  
 Ladies—7, Commercial Road.

(Next door to Gardiner's.)

2s. 6d. before 6; 1s. 6d. after 6 p.m.  
 And at London Bridge and Charing Cross.



**G. SEADEN,**  
 Canning Town Cycle Works  
 155, BANK BUILDINGS,  
 BARKING ROAD,  
**CANNING TOWN.**

Machines Sold on the Hire  
 Purchase System, from 2/6  
 per week.  
 Repairs on the Shortest Notice.

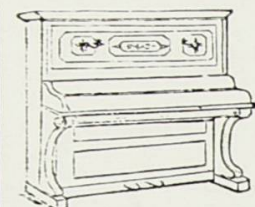
EAST END AGENT FOR  
**RUDGE & NEW RAPID.**

**KING'S**  
 Men's Tweed Trousers  
 FROM  
**5/6**  
 NO BETTER IN LONDON.  
 Ready Made or Made to Measure.

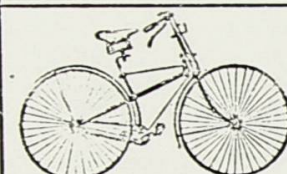
Hundreds of Patterns  
 to select from.

**W. J. KING**  
 Merchant Tailor  
 AND  
 JUVENILE OUTFITTER,  
 16 & 18, Green St.,  
**BETHNAL GREEN, E.**

**JARRETT & GOUDGE'S**  
 Celebrated Full Trichord, Iron-Framed, Check Action  
**PIANOFORTES.**



From 10/6 per Month.  
 A Guarantee with every Instrument.  
 Unsurpassed for Quality of Tone.  
 Magnificent Instruments at Manufacturers' Prices for Cash, or by Easy Terms.  
 City Warehouse: 6, NEW BROAD ST., E.C.  
 EAST END SHOW ROOM:  
**308, MILE END ROAD, E.**  
 Steam Works: Triangle Rd., Hackney, E.



**W. S. CROKER,**  
 Cycle Manufacturer,  
 2, St. Stephen's Road,  
 BOW, E.

Any make of Machine supplied  
 at a large discount for Cash, or on easy payment system. Repairs  
 of every description executed Promptly and Cheaply. All the  
 latest pattern Machines let on hire.  
 Second-hand Machines Bought, Sold, or Exchanged.  
 Fittings supplied and Repairs done for the Trade.

2, St. Stephen's Road, BOW, E.

Loss of Teeth is Loss of Health.  
 TEETH FITTED WITHOUT PAIN.



Teeth, 2s. 6d.  
 to £1 1s.  
 Ordinary Extractions, 1s.; Painless  
 Extractions, 5s.  
 Sets, £1 1s. to  
 £10 10s.  
**MR. W. FAIRST,**  
 Dental Surgeon,  
 586, Old Ford Road, E.

**E. C. PHILLIPS & CO.'S.**  
 FIRST CLASS

Pianofortes & Organs  
 For CASH or on EASY TERMS.  
 From 10/6 Month.  
 A Liberal Discount for Cash.  
 Every instrument guaranteed for 15 years.



EXTENSIVE SHOWROOMS:  
**415, MARE STREET, HACKNEY.**  
 Pianofortes Tuned and Repaired equal to new  
 at Moderate Charges. Estimates Free.

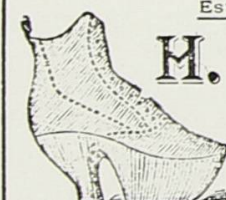
Established 1855.

**GIVEN AWAY!**  
 Your Rubber Stamp.

NAME in FULL or MONOGRAM,  
 mounted, post free for three  
 stamps, to CRYSTAL PALACE JOHN  
 BOND'S GOLD MEDAL  
 MARKING INKWORKS,  
 75, Southgate-road, London, N.  
 E. BONTITE INK,  
 NO HEATING, each  
 containing a Voucher  
 for 6 or 12 stamps. Nickel  
 Pencil Case, with Pen,  
 Pencil and your Rubber Name in Full,  
 7 stamps.

HE ROYAL MAKER.

Established 25 Years.  
**H. CLOGG,**  
 175 & 177,  
 HANBURY ST.,  
 Mile End New Town.



Cork & Deformity Boot Maker to the London, German and other Hospitals.  
 We are also the Makers of the SPRING WAISTED BOOTS, medically advised  
 for the Remedy of Flat Feet, produced by many hours standing & general weakness.

**DIAMONDS**  
 And other Precious Stones  
 MOUNTED or RE-SET  
 In 9, 15, or 18-carat Gold,  
 IN ANY STYLE.

Repairs, Re-Plating & Re-Gilding  
 of every description.

Money liberally advanced upon every  
 description of valuable property.

**E. RICHARDSON,**  
 FAMILY BAKER,  
 Cook & Confectioner,  
 622,  
 MILE END RD.

Wedding Cakes, Luncheon and  
 other Cakes. Biscuits of superior  
 quality. Milk Scones. Contractor  
 for Wedding and Evening Parties.  
 Public or Private Tea Meetings.

**Notice! HARRY ERSKINE, the Great Hatter.**  
 NOW OPEN the New Blue-Hat Warehouse,  
**131, WHITECHAPEL ROAD, London** Opposite  
 Hospital.

# PROGRAMME OF EVENING CONCERT,

TO BE GIVEN ON

Saturday, Sept. 6th, 1890,

AT EIGHT O'CLOCK.

Musical Director to the People's Palace, MR. ORTON BRADLEY, M.A.

PEOPLE'S PALACE MILITARY BAND,

Conductor, Mr. A. ROBINSON (late Prince of Wales' 3rd Dragoon Guards).

VOCALISTS:

MADAME BARTER AND MR. T. W. PAGE.

- PART I.**
1. MARCH ... "Far Away" ... Anon.
  2. OVERTURE ... "Poet and Peasant" ... Suppé.
  3. SONG ... "Come back, Sweetheart" ... S. Larckom.  
 MR. T. W. PAGE.

Come back again, sweetheart, forgive, forget,  
 For all the years we've been apart  
 Have been in vain, I love you yet.  
 Breathe once again in accents low,  
 The loving words that once you said,  
 And let the hopes of years ago  
 Return again from out the shade.  
 Come back and let me see—in smiles not tears,  
 A face long lov'd thro' all the vanish'd years;  
 Come back and soothe the weary pain,  
 And let me hear once more Love's sweet refrain.

4. VALSE ... "Pres De Foi" ... Waldteufel.

5. QUADRILLE ... "Ruddigore" ... Bucalossi.

6. SONG ... "Come back to Erin" ... Claribel.  
 MADAME BARTER.

Come back to Erin, mavourneen, mavourneen,  
 Come back, aroon, to the land of thy birth;  
 Come with the shamrocks and spring-time, mavourneen,  
 And it's Killarney shall ring with our mirth.  
 Sure when we lent ye to beautiful England,  
 Little we thought of the lone winter days,  
 Little we thought of the hush of the sunshine  
 Over the mountain, the bluffs, and the braes.  
 Then come back to Erin, mavourneen, mavourneen,  
 Come back again to the land of thy birth,  
 Come back to Erin, mavourneen, mavourneen,  
 And it's Killarney shall ring with our mirth.

Over the green sea, mavourneen, mavourneen,  
 Long shone the white sail that bore thee away,  
 Riding the white waves that fair summer mornin'  
 Just like a May flower afloat in the bay.  
 O, but my heart sank when clouds came between us,  
 Like a gray curtain, the rain falling down,  
 Hid from my sad eyes the path o'er the ocean,  
 Far, far away, where my colleen had flown.  
 Then come back, etc.

O may the angels, O wakin' and sleepin',  
 Watch o'er my bird in the land far away;  
 And it's my prayers will consign to their keepin'  
 Care o' my jewel by night and by day.  
 When by the fireside I watch the bright embers,  
 Then all my heart flies to England and thee,  
 Cravin' to know if my darlin' remembers,  
 Or if her thoughts may be crossin' to me.  
 Then come back, etc.

7. GRAND SELECTION "Faust" ... Gounod.



8. SONG ... "Let me like a Soldier Fall" ... *Balfe.*  
MR. T. W. PAGE.

Yes! let me like a soldier fall, upon some open plain;  
This breast expanding for the ball, to blot out ev'ry stain.  
Bravely manly hearts confer my doom, that gentler ones may tell,  
Howe'er forgot, unknown my tomb, I like a soldier fell.  
I only ask of that proud race, which ends its blaze in me;  
To die, the last, and not disgrace its ancient chivalry.  
Though o'er my clay no banner wave, nor trumpet requiem swell,  
Enough, they murmur o'er my grave, he like a soldier fell.

9. GRAND MARCH "Tannhäuser" ... *Wagner.*

PART II.

10. SONG "In Seville's Groves" *H. Martyn Van Lennep.*  
MADAME BARTER.

Oh, nightingale! the night is still,  
The shadows darken round,  
The moon is shining o'er Seville,  
And hush'd is every sound!  
Then sing to me as once you sang,  
In days of long ago,  
When love, like joy-bells softly rang,  
In hearts it gladdened so,  
Sing on, sweet nightingale, sing on!  
Of happy moments past and gone.  
Ah! sing on.

Hark! hark! along the distant glen,  
The music steals afar,  
Beyond the weary ways of men,  
To yonder evening star;  
Beyond the hopes, the toils, and fears,  
That bind us here below;  
It soars on high, above the years,  
Where fain am I to go.  
Sing on, sweet nightingale, sing on,  
Of happy moments past and gone.  
Ah! sing on.

11. GRAND FANTASIA "Erin" ... *Bosquini.*  
Introducing Garry Owen, Kathleen Mavourneen,  
The Shamrock, The Harp that once thro' Tara's  
Halls, Barney O'Hea, Cruiskeen Lawn, Oh for  
the days of former times, Rakes of Mallow (Vocal  
Chorus), Come back to Erin, Shilly Shally, Brian  
Borhoim's March, etc.

12. SONG ... "Pipe Song" (Rip Van Winkle)  
MR. T. W. PAGE.  
I've had lady loves in my day,  
With lips rose red and a lustrous eye,  
And I've witness'd the rose decay,  
The beauty fade, and the lovelight die;  
But my latest love will last,  
When follies of youth are past.

My pipe—O breathe full south,  
From thy cool amber mouth;  
Let my fond grasp entwine,  
Thy slim figure divine.  
Thy kindling eye,  
And thy odorous sigh,  
Are more rapturous far,  
Than a love told by light of the star!

Women sometimes will prove unkind,  
Capricious beauty will be, I know,  
Poor man's torment time out of mind,  
Now warm as Ind and now cold as snow!  
But my pipe is mistress friend,  
When love and illusion end!  
My pipe—oh breathe full south, etc.

13. VALSE ... "Visions D'Amour" ... *Dillbrück.*

14. E flat CLARINET SOLO "Danse De Saytrs" *Le Thiere.*

15. SONG ... "Twickenham Ferry" ... *Theo. Marzials.*  
MADAME BARTER.

O hoi-ye-ho, ho-ye-ho, "Who's for the ferry?"  
(The briars in bud, the sun going down),  
"And I'll row ye so quick, and I'll row ye so steady,  
And 'tis but a penny to Twickenham Town;"  
The ferryman's slim, and the ferryman's young,  
And he's just a soft twang in the turn of his tongue,  
And he's fresh as a pippin, and brown as a berry,  
And 'tis but a penny to Twickenham Town.

O hoi-ye-ho, ho-ye-ho!  
O hoi-ye-ho, ho-ye-ho, "I'm for the ferry"  
(The briars in bud, the sun going down),  
"And it's late as it is, and I haven't a penny,  
And how shall I get me to Twickenham Town?"  
She'd a rose in her bonnet, and oh! she looked sweet  
As the little pink flower that grows in the wheat,  
With her cheeks like a rose, and her lips like a cherry,  
"And sure and you're welcome to Twickenham Town."  
O hoi-ye-ho, ho-ye-ho, ho-ye-ho-ho!

O hoi-ye-ho, Ho! you're too late for the ferry,  
(The briars in bud, the sun going down),  
And he's not rowing quick, and he's not rowing steady,  
You'd think 'twas a journey to Twickenham Town.  
"O hoi, and O ho," you may call as you will,  
The moon is a rising on Petersham Hill,  
And with love like a rose in the stern of the wherry,  
There's danger in crossing to Twickenham Town.  
O hoi-ye-ho, ho-ye-ho, ho-ye-ho-ho!

16. MARCH ... "Bengali" ... *Brophy.*

# Popular Entertainments.

Under the Direction of MR. ORTON BRADLEY and MR. C. E. OSBORN.

## PROGRAMME

— OF —

# Campanological and Vocal Entertainment

## TO BE GIVEN BY THE

# ROYAL HOLDFAST HAND-BELL RINGERS

ON

MONDAY, September 8th, 1890,

AT EIGHT O'CLOCK.

### PART I.

PIANOFORTE SOLO ...	... "Selected" ...	Mr. W. Tyacke George.
MORCEAU ...	"The Huntsman's Chorus" (Des Freischutz) ...	Weber.
PART SONG ...	"When Evening's Twilight" ...	J. L. Hatton.
POLKA ...	"Village Chimes" ...	Bernard.
SOLO ...	"Moonlight and Starlight" ...	Dobrowolski.
RECITATION ...	MR. BEVAN JONES. "Cobus Hagelstein" ...	MR. WRIGHT.
SELECTION ...	"Scotch Airs" (2nd series) ...	...
GLEE ...	"The Jolly Tinkers" ...	Dr. Aylward.
AIR ...	"Harmonious Blacksmith" ...	Handel.

### PART II.

PIANOFORTE SOLO ...	... "Selected" ...	Mr. W. Tyacke George.
AIR ...	... "Mandolinata" ...	Paladilhi.
SOLO ...	"The Last Watch" ...	Pinsuti.
SELECTION ...	MR. WRIGHT. ... "Fairy Bells" ...	MR. DENINGTON.
SOLO ...	... "Selected" ...	MR. HUGH ROY.
SELECTION ...	... "Welsh Airs" ...	...
SOLO ...	... "Moods and Tenses" ...	MR. BRAND.
AIR ...	"Home, Sweet Home" (with variations) ...	...
GLEE ...	"The Village Wedding" ...	Laurent de Rille.

— NATIONAL ANTHEM. —

Monday, September 8th, 1890, Campanological and Vocal Entertainment,  
by the Royal Holdfast Hand-Bell Ringers.



MESSRS  
**C. C. & T. MOORE**  
Respectfully announce the dates  
of their old established  
**Periodical Sales**  
OF  
**ESTATES**  
AND HOUSE PROPERTY.

(Held for 55 years), which are appointed  
to take place at the Auction Mart,  
Tokenhouse Yard, on the 2nd  
and 4th Thursdays of the  
Month, as follows:

Feb. .. 27	Aug. .. 14.
Mar. .. 13. 27	Sept. .. 11. 25
April. .. 10. 24	Oct. .. 9. 23
May .. 8. 22	Nov. .. 13. 27
June .. 12. 26	Dec. .. 11. —
July .. 10. 24	

Special attention given to Rent Col-  
lecting and the entire management of  
house property. Insurances effected.

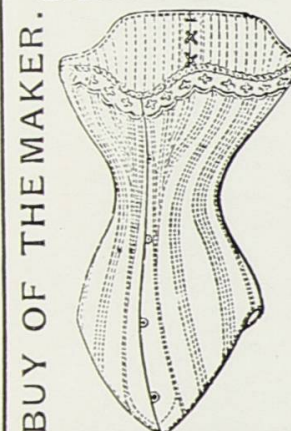
Auction and Survey Offices:  
144, MILE END RD., E.

**T. J. RIX,**  
Practical Watch Maker,  
MANUFACTURING  
JEWELLER OPTICIAN,  
ETC., ETC.  
480, Bethnal Green Road, E.

Repairs, Plating & Gilding  
done for the Trade on the Premises.

ESTABLISHED 1862.  
Closed on Thursdays at Five o'clock.

**CORSETS.**



**C. J. RUSSELL,**  
512, Mile End Rd.,  
and 164a, ROMAN ROAD.

DORSET HOUSE. Est. 1850.

**H. TURTLE,**  
244, MILE END ROAD,  
(Opposite Globe Road).  
**FRESH BUTTERS.**

The Best Fresh .. ..	1/4
The Best Brittany .. ..	1/2
Paris Fresh .. ..	1/0
(Usually sold as Brittany.)	
<b>SALT BUTTERS.</b>	
The Very Best Dorset .. ..	1/2
Good Mild or Salt .. ..	1/0
An excellent Butter .. ..	1/0
Pure Irish .. ..	0/10
N.B.—All our Butters are warranted	
absolutely pure.	

**MILE END AUCTION MART**  
330 & 332, MILE END ROAD.

**Messrs. W. UPTON & CO.**  
Sell by Auction every Tuesday & Friday, at 7 p.m., a quantity  
of HOUSEHOLD FURNITURE and EFFECTS.  
Freehold and Leasehold Houses and Land sold by auction and privately.  
**RENTS COLLECTED.**

**ROGERS' "NURSERY"  
HAIR LOTION**



Destroys all itches  
and Parasites in  
children's heads,  
and immediately  
allays the irrita-  
tion. Perfectly  
harmless.

Prepared only by **W. ROGERS,**  
Chemist, Ben Jonson Road,  
Stepney, E. Bottles 2d. and 1s.  
Of all Chemists and Perfumers.  
Special Bottles, post free from obser-  
vation, 15 Stamps.

**GROVER'S** (J. V. ROCKLEY, Proprietor,  
150, The Grove, } Connected by } 26, Woodgrange Rd.,  
STRATFORD, } Telephone } FOREST GATE.

**PIANOS ON EASY TERMS.**

No Deposit or Security required, and no charge for Carriage or  
First Year's Tuning.

**"CREAM OF  
MAGNOLIA."**

**MATCHLESS for the COMPLEXION,  
AND FOR USE AFTER SHAVING.**

A marvellous and unique preparation for

SOFTENING, TONING, AND BEAUTIFYING THE SKIN.

INVALUABLE FOR REMOVING

SPOTS, SUNBURNS, BLOTCHES, AND ALL IMPERFECTIONS.

Imparts a Velvety Softness and Bloom.

Renders it Beautiful to the Eye and Deliciously

Soft. Can be used with the most perfect

Safety to any Child.

In Bottles Post Free 2s. 6d., 4s., 7s., and 10s. 6d., or

Sample Bottles, Post Free, 1s. 3d., direct from the Pro-  
prietor.

**JOHN STEEDMAN,**  
154, QUEEN'S ROAD, BAYSWATER,  
LONDON, W.

And of all Chemists, Perfumers and Stores throughout the world.  
ESTABLISHED 1836.

Ladies once using this Preparation will never be  
without it.

The Best and Cheapest Works in the East-End for all  
kinds of repairs is at the

**NORTH BOW CYCLE WORKS,**  
ORDELL ROAD,  
TREDEGAR ROAD, BOW, E.  
(Opposite St. Stephen's Church).

MAKER OF THE "TREDEGAR SAFETY,"  
Price £7 to £15. Easy Terms.

A large stock of Accessories, also Machines  
for Hire. All work guaranteed and done on  
the premises by experienced mechanics.

PLEASE NOTE THE ADDRESS—ORDELL ROAD, three minutes' walk from  
Bow Station.

**TEETH !!**

A Complete Set, ONE GUINEA.

A Single Tooth, 2/6.

**Burdett Road Dental Surgery,**

41, BURDETT ROAD.

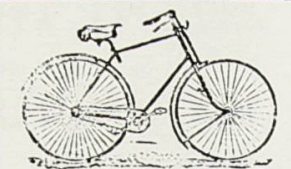
**ESTIMATES FREE.**



Personal Superintendence.

**CHARLES PARKES,**  
4, Up. Montague St.,  
TREDEGAR SQUARE,  
E.

Agent for the Star Life Assur-  
ance Society, and Railway Passengers  
Assurance Co.



**LAMONT  
CYCLE WORKS.**

Beachcroft Road,

**LEYTONSTONE, E.**

FIRST-CLASS REPAIRER

by appointment to the C.T.C.

Agent for all Leading Manufacturers.

**High-Class Machines**

ON HIRE AND SALE.

Those about to purchase a

machine should inspect the

newly designed "Lamont"

Cycles before deciding.

**E. SLATER & Co**

HIGH-CLASS READY-  
MADE AND BESPOKE

**Tailors**

AND

**Outfitters.**

**WEST-END STYLE**

AND FIT.

**MODERATE PRICES.**

Makers of the Beaumont

Club Bicycle Suit.

Large Selection of Latest

Goods to select from.

Indian, Colonial, & Athletic

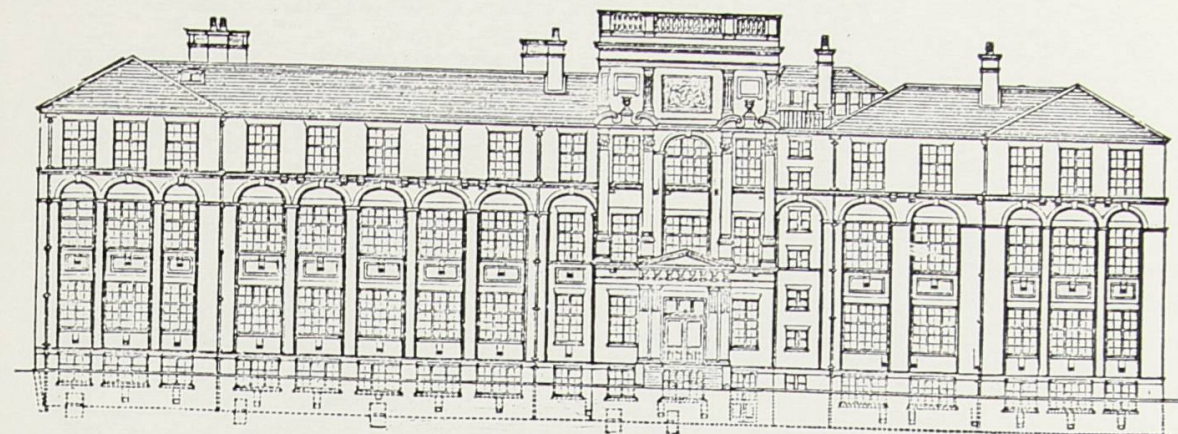
Outfits on the shortest notice.

**PATTERNS FREE.**

**143, MILE END ROAD,**

**E.**

THE PEOPLE'S PALACE DRAPERS' COMPANY'S TECHNICAL SCHOOLS.  
EXTERIOR VIEW.



EAST ELEVATION.

The above School RE-OPENED on MONDAY, 1st SEPTEMBER.

Boys eligible to join must:—1st.—Be not less than 12 years of age. 2nd.—Have passed at least the Fifth Standard, or an examination equivalent to same. 3rd.—Be sons of parents whose income is under £200 per annum.\*

THE SCHOOL IS ONE OF THE MOST COMPLETE IN THE KINGDOM.  
Chemical and Physical Laboratories, Metal and Wood Working Shops, Etc., and a Spacious  
Gymnasium are attached to the School.

**FEES:**—1/- per week, or 10/- per School Term. These fees include:—Tuition, Drawing Paper, Exercise Books, Note Books, and the use of all Text Books, Drawing Boards, T Squares, Workshop Tools, Chemical and Physical Apparatus and Chemicals required.

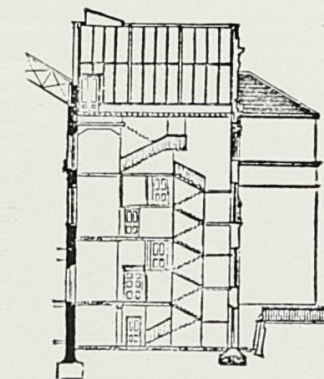
The School Terms for the Session 1890-91 are as follows:—1st Term.—September 1st to November 7th.  
2nd Term.—November 10th to January 30th. 3rd Term.—February 2nd to April 24th. 4th Term.—April 27th to July 17th.

Forms of application may now be obtained from the Secretary, People's Palace Drapers' Company's Technical Schools, Mile End Road, E.

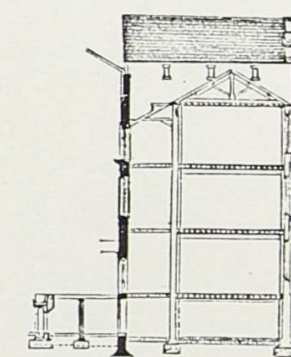
\* A limited number of boys will be admitted whose parents' income exceeds £200 per annum; the fees being £3 8s. per annum payable in advance.

THE PEOPLE'S PALACE DRAPERS' COMPANY'S TECHNICAL SCHOOLS.

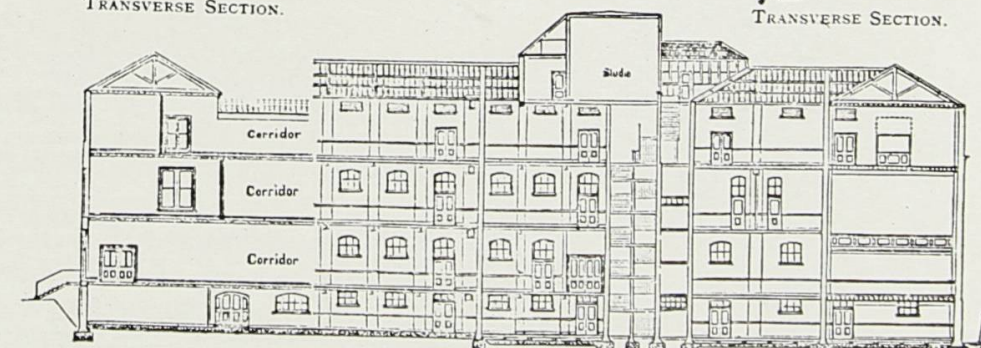
INTERIOR VIEW.



TRANSVERSE SECTION.



TRANSVERSE SECTION.



LONGITUDINAL SECTION.



# OUR HOLIDAY COMPETITION.

Open to any Member of the People's Palace under 20 years of age.

## PRIZE ANNOUNCEMENT.

In order to stimulate the Members to greater effort, and to increase the interest in the *Palace Journal*, we have decided to offer a

# PRIZE OF ONE GUINEA

FOR WHAT IS DECIDED TO BE THE

# BEST DESCRIPTION OF YOUR HOLIDAY, 1890.

This subject is chosen as being one suitable to persons of either sex.

## CONDITIONS.

The description may contain any number of words up to 2,000, and must be written on one side of the paper only.

Saturday, September 20th, is the last day for receiving competitions, which are considered to be the property of the Editor.

The successful description will be published in the *Journal* at a future date.

Envelopes must be addressed to the Editor and be marked "Holiday Competition," Editor of *Palace Journal*, People's Palace.

The successful Competitor must give satisfactory proof of age, and that the essay is his or her own unaided production.

Should there be a sufficient number of Competitors a further Prize of Half-a-Guinea will be awarded to the next best.

## CHIPS.

A PORTRAIT of Sir Edmund Currie will appear in our next issue.

THE Entertainment of last Monday consisted of a Venetian performance by Mr. Russell, and was acknowledged a decided success.

THE energetic "Star Man" has been in our midst, as will be seen by a report under the head of Military Band notes. (See page 194).



OUR BABY, FOUR A.M.



PRESENT DAY LITERATURE.

This is the man who writes jokes for the "Weekly Whirligig."

An old lady, visiting one of her friends, found a child of the latter, a mite of five or six years, sobbing bitterly and apparently in great distress.

"You shouldn't cry like that," said the visitor; "that's what makes little girls ugly!"

Dolly looks up through her tears and gazes at the visitor.

"What a lot you must have cried when you were a little girl!"

## DRAPERS' COMPANY'S INSTITUTE,

In connection with the Science & Art Department, South Kensington, the City & Guilds of London Institute for the Advancement of Technical Education, & the Society of Arts  
Head Master, Mr. D. A. LOW (Wh. Sc.), M. Inst. M.E.  
Secretary, Mr. C. E. OSBORN.

## TIME TABLE OF EVENING CLASSES FOR SESSION 1890-91.

The Session will commence on Monday, September 29th, 1890.

The Classes are open to both sexes without limit of age. As the number which can be admitted to each Class is limited, intending Students should book their names as soon as possible. During the Session, Concerts and Entertainments will be arranged for Students in the Queen's Hall on Wednesday evenings, to which they will be admitted on payment of One Penny. The Swimming Bath will be reserved for the exclusive use of Students on certain days and evenings in each week during the summer months, and they will be admitted on payment of One Penny. The Governors will be pleased to consider the formation of Classes other than those mentioned in the Time Table, provided a sufficient number of Students offer themselves for admission. The Governors reserve the right to abandon any Class for which an insufficient number of Students enrol. Each Student on taking out his or her Class Ticket will be provided with a Pass, upon which a deposit of One Shilling must be paid; this Pass must be returned within seven days of the expiration of the Class Ticket, failing which the deposit will be forfeited and the Pass cancelled. Further particulars may be obtained on application at the Office of the Schools.

### Art Classes.

SUBJECTS.	TEACHERS.	DAYS.	HOURS.	FEES.
Freehand & Model Draw.	Mr. Arthur Legge	Monday		
Perspective Drawing		Tuesday		
Drawing from the Antique	Mr. Bateman	Thursday	8.0-10.0	7 6
Decorative Designing		& Friday		
Modelling in Clay, etc.				
Drawing from Life	Mr. H. Costello	Friday	8.0-10.0	5 0
Etching		Tues. & Thur.	8.0-10.0	6 0
Wood Carving	Mr. T. J. Perrin	Mon. & Friday	8.0-10.0	5 0
Art Metal Wk. & Engraving	Mr. Daniels	Tues. & Thur.	8.0-10.0	6 0

\* Per Session. † Per Term of 12 weeks. ‡ Students of the Wood Carving Class may attend a Drawing Class in the Art School one evening per week free of charge.

### Trade Classes.

SUBJECTS.	TEACHERS.	DAYS.	HOURS.	FEES.
Cabinet-mkng. & Desig. Lec.		Monday	7.30-8.30	
" " Workshop		Thursday	8.30-10.0	10 0
Carpentry & Joinery, Lec.	Mr. W. Graves	Friday	8.0-9.30	5 0
" " Workshop		Tu. & Th.	8.0-10.0	10 0
Brickwork and Masonry, Lec.	Mr. A. Grenville	Monday	7.0-10.0	7 6
Lecture and Workshop	& Mr. R. Chaston			
Electrical Engng., Lec.	Mr. W. Slingo	Thursday	8.0-10.0	6 0
Laboratory & Workshop	A.I.E.E. and Mr. A. Brooker	Tu. & Fri.	8.0-10.0	6 0
Mechl. Engng. Lec.	Mr. D. A. Low (Wh. Sc.)	Monday	7.30-8.0	
" " (Adv.)	M.I.M.E., Mr. D. Miller, & Mr. G. Draycott (Wh. Ex.)	Friday	7.30-8.30	4 0
" " Workshop		Mon. & Fri.	8.0-10.0	10 0
Photography, Lecture				
" " Studio				
Plumbing, Lecture	Mr. G. Taylor	Tuesday	8.30-10.0	5 0
" " Workshop		Monday	8.0-10.0	8 6
Printing (Letterpress)	Mr. E. R. Alexander		8.0-9.30	6 0
Tailor's Cutting	Mr. Umbach		8.0-9.30	5 0
Upholsterer's Ctg. & Drpg.	Mr. G. Scarmant		8.0-9.30	5 0
Land Surveying & Levelling	Mr. F. C. Forth	Commencing in April, 1891	20 0	

\* Per Session (ending immediately after the Examinations of the City and Guilds Institute in May, 1891).

† Per Course.

‡ Free to those taking the Workshop Classes in the same subject.

§ 12s. 6d. for both, but only Members of the Lecture Class will be allowed to join the Workshop Class in Plumbing.

To persons joining the Trade Classes who are not actually engaged in the trade to which the subjects refer, double fees are charged. No one can be admitted to the Plumbing Classes unless he is engaged in the Plumbing trade.

The above fees for Workshop instruction include the use of all necessary tools and materials.

### Science Classes.

Specially in preparation for the Examinations of the Science and Art Department.

SUBJECTS.	TEACHERS.	DAYS.	HOURS.	FEES.
Animal Physiology				
Applied Mechanics	Mr. F. G. Castle	Thursday	9.0-10.0	4 0
	A.I.M.E.			4 0
Building Construction and Drawing, Elem.	Mr. A. Grenville		7.30-10.0	4 0
" " Advanced		Tuesday	7.30-10.0	4 0
Chem., Inorg. Theo., Ele.			7.15-8.15	4 0
" " Theo., Adv.	Mr. D. S. Macnair	Friday	8.15-10.0	10 6
" " Prac.	Ph. D.F.C.S.		7.15-8.15	4 0
" " Org., Theoretical	Assistant—	Monday	8.15-10.0	10 6
" " Practical	Mr. G. Pope	"	7.15-8.15	4 0
" " Inorg. & Org. Hons. and Special Lab. Wk.		Mon., Tu., Fri.	7.0-10.0	15 0
Prac. Plane & Solid Geo.				
Elem. Adv.	Mr. D. A. Low	Mon. & Th.	8.0-9.0	4 0
Mach. Construct. & Draw.	(Wh.Sc.) M.I.M.E.	"	9.0-10.0	4 0
Elem. Adv.	Mr. F. C. Forth	Tuesday	8.0-10.0	4 0
Mathematics, Stage I.	Mr. E. J. Burrell	Tues. & Th.	7.45-8.45	4 0
" " II.			8.45-9.45	4 0
Magnet. and Elect., Elem.	Mr. W. Slingo	Monday	8.0-9.0	4 0
" " Adv.	A.I.E.E. and		9.0-10.0	14 0
" " Prac.	Mr. A. Brooker	Tues. & Fri.	8.0-10.0	6 0
Sound, Light, and Heat	Mr. F. C. Forth	Friday	9.0-10.0	4 0
Steam & the Steam Engine	Mr. F. G. Castle	Thursday	8.0-9.0	4 0
Theoretical Mechanics	A.I.M.E.	Friday	8.45-9.45	4 0

Per Session (ending immediately after the Examinations of the Science and Art Department in May, 1891).

\* Free to Members of any other Science, Art, or Trade Class.

† Only Members of these Classes can join the Electric Laboratory and Workshop Practice Class.

Every facility will be given to Students of Chemistry desiring special instruction, or wishing to engage in special work. Students are supplied free with apparatus and chemicals. A deposit of 2s. 6d. will be required to replace breakages.

Students desirous of joining this Class will please see Dr. Macnair before enrolling.

Apprentices under 20 years of age will be admitted to the Science, Art, and Trade Classes at half fees.

Printed by THOMAS POULTER & SONS, LIMITED, for the TRUSTEES of THE BEAUMONT TRUST, People's Palace, Mile End, E., at their Works The Globe Printing and Paper Works, Rupert Street, E. Office: 6, Arthur Street West, E.C.—Wednesday, September 3, 1890.

### Musical Classes.

(Under the direction of Mr. Orton Bradley, M.A.)

SUBJECTS.	TEACHERS.	DAYS.	HOURS.	FEES.
Violin	Under the direc. of Mr. W. R. Cave, assist. by Mr. G. Mellis	Monday	6.0-10.0	5 0
Viola and Violoncello		Tuesday	6.0-10.0	5 0
		Monday	6.0-10.0	7 6
Singing (Sol-fa Not.) Elem.	Mr. W. H. Bonner	Thursday	8.0-9.0	1 6
" (Staff Not.) Inter.		"	9.0-10.0	1 6
" (Staff Not.)		Monday	8.0-9.0	1 6
" Teach. Certif. Cls.		"	9.0-10.0	1 6
* Solo Singing	Mrs. C. A. Graves	Thursday	6.30-	5 0
Choral Society	(Mr. Orton Bradley, M.A.)	Tuesday	7.30-10.0	15 0
	ley, M.A.	Friday	8.0-10.0	1 6
* Pianoforte	Mr. Hamilton & Mrs. Spencer	M. T. Th. & F.	4.0-10.0	9 0
Orchestral Society	Mr. O. Bradley, M.A.	Thursday	7.0-10.0	15 0
	Mr. W. R. Cave	Tu. and Fri.	8.0-10.0	2 0

For Term ending 19th December, 1890.

\* In these subjects the Students are taught individually, each lesson being of twenty minutes' duration.

† Half this fee to Members of the Choral Society.

### General Classes.

SUBJECTS.	TEACHERS.	DAYS.	HOURS.	FEES.
Arithmetic—Advanced	Mr. A. Sarll, A.K.C.	Monday	7.0-8.0	2 6
" Commercial	"	"	8.0-9.0	2 6
" Elementary	"	"	9.0-10.0	2 6
Book-keeping—Elemen.	"	Thursday	6.0-7.0	4 0
" Interme.	"	"	7.0-8.0	4 0
" Beginners	"	"	8.0-9.0	4 0
" Elemen.	"	"	9.0-10.0	4 0
CIVIL SERVICE—				
A.—For Telegraph Learners, Female Sorters, and Boy Copyists	Mr. G. J. Michell, B.A., Lond.	Thursday	6.30-8.45	10 0
B.—For Boy Clks., Excise & Customs Officers (Beginners), & Female & Lower Division Clerks (Beginners.)	"	Tuesday	6.30-9.30	12 0
C.—For Excise and Customs Officers, and Female and Lower Division Clerks	"	(Tuesday & Thursday)	7.45-9.45	14 0
Shorthand (Pitman's) Ele.	Messrs. Horton and Wilson	Friday	8.0-9.0	4 0
" " Advan. Report.	"	"	9.0-10.0	4 0
French, Beginners	Mons. E. Pointin	Monday	8.0-9.0	4 0
" " Eleme. 1st Stage	"	"	7.0-8.0	4 0
" " Eleme. 2nd Stage	"	Friday	7.0-8.0	4 0
" " Eleme. 3rd Stage	"	Tuesday	8.0-9.0	4 0
" " Intermediate	"	"	9.0-10.0	4 0
" " Advanced A	"	"	7.0-8.0	4 0
" " Advanced B	"	Friday	9.0-10.0	4 0
" " Conversational	"	"	8.0-9.0	4 0
German, Advanced	Herr Dittell	"	7.0-8.0	4 0
" " Beginners	"	"	9.0-10.0	4 0
" " Intermediate	"	"	8.0-9.0	4 0
Elocution (Class 1)	Mr. S. L. Hasluck	Thursday	6.0-7.30	5 0
(Class 2)	"	"	8.0-10.0	5 0
Writing	Mr. T. Drew	Tuesday	8.0-10.0	2 6
* Type-Writing	Mr. Kilburne	"	6.0-10.0	10 6

For Term ending 19th December, 1890.

\* In this subject the Students are taught individually, each lesson being of twenty minutes' duration.

### Special Classes for Women only.

SUBJECTS.	TEACHERS.	DAYS.	HOURS.	FEES.
Dressmaking	Mrs. Scrivener	Monday	5.30-7.0	5 0
Millinery	Miss Newall	Friday	7.30-9.0	5 0
		Tuesday	5.30-7.0	5 0
Cookery—Demonstrative Lec.	Mrs. Sharman	Monday	7.30-9.0	3 0
" High-class Prac.	"	"	8.0-9.30	10 6
" Practical Plain	"	Thursday	8.0-9.30	5 0
Elementary Class, including Reading, Writing, Arithmetic, etc.	"	Friday	8.0-9.30	3 0

For Term ending 19th December, 1890.

### Special Lectures.

SUBJECTS.	LECTURERS.	DAYS.	HOURS.	No. of Lects.	Commencing.	Fee per Crse.
Ambulance	Dr. Milne	Tu.	8.0-9.30	5	Oct 17	1 0
Strength of Materials & Structures	Mr. D. A. Low (Wh. Sc.) M. Inst. M.E.	Fri.	9.0-10.0	9	Oct 17	1 6
Machine Design	"	"	9.0-10.0	9	Jan 9	1 6
Univer. Exten. Lectures (particulars shortly)	"	"	"	"	"	"



**S. DAVIS & CO**  
CASH OR CREDIT  
NOT HIRE SYSTEM.

From 20/-  
Complete, 55/-  
1/- Weekly

From 21/-

**SUITE COMPLETE**  
**£6.15.0.**

TERMS TO SUIT  
CUSTOMERS' CONVENIENCE.

Send for Price List, Post Free. All Goods Marked in Plain Figures.

**S. DAVIS & CO.'S LONDON BRANCHES:**  
Period House, Borough, S.E. (nr. St. George's Church).  
125, Tottenham Court-road, W. (near Euston-road).  
10, Hackney-road, E. (near Shoreditch Church).  
53 and 55, High-street, Peckham (facing Rye-lane).

18, Commercial-road, E. (near Leman-street).  
144, The Grove, Stratford, E. (corner of Gt. Eastern-st.).  
24, King-street, Hammersmith (near Broadway).  
498, Brixton-road (facing Coldharbour-lane).

(Chief Office and Wholesale Depot) **241, 243, 245, 247 & 251, HIGH ST., BOROUGH, S.E.**

## CHINA & GLASS.

**BRUNSKILL,**  
**508, MILE END ROAD**  
(NEARLY OPPOSITE PALACE).

Is now showing a well selected STOCK of  
**DINNER SETS! TEA SETS! TOILET SETS!**  
**At Low Prices.**

An elegant display of Flower Stands, Epergnes, &c.

A LARGE STOCK OF USEFUL AND HANDSOME  
ARTICLES FOR PRESENTS.

Jugs, Tumblers, Decanters, Wines, &c., in great variety.  
GOODS SENT HOME FREE.

## GREAT EASTERN RAILWAY—SEASIDE.

AN ACCELERATED and IMPROVED SUMMER  
SERVICE of FAST TRAINS is NOW RUNNING TO  
YARMOUTH, LOWESTOFT, CROMER, SOUTHBEND-ON-SEA,  
CLACTON-ON-SEA, WALTON-ON-NAZE, HARWICH,  
DOVERCOURT, FELIXSTOWE, ALDEBURGH, SOUTH-  
WOLD, and HUNSTANTON.

TOURIST, FORTNIGHTLY, and FRIDAY or SATURDAY  
to MONDAY or TUESDAY TICKETS, at REDUCED FARES,  
are issued by all trains.

## CHEAP DAY EXCURSIONS TO THE SEASIDE, &c.

SOUTHBEND-ON-SEA and BURNHAM-ON-CROUCH.—  
Excursion Tickets are issued Daily from Liverpool Street, &c.  
Fares: 1st, 5/-; 2nd, 4/-; 3rd, 2/6.

Clacton-on-Sea, Walton-on-Naze, and  
Harwich.—Excursion Tickets are issued Daily by Train  
leaving Liverpool Street at 9.10 a.m. on Sundays, 8.25 a.m. on  
Mondays (fare: 3rd class 4/-), and at 7.0 a.m. on other days  
(fare: 3rd class 5/-).

Broxbourne and Rye House.—Excursion Tickets  
are issued Daily from Liverpool Street, Bishopsgate, Bethnal  
Green, &c. Fares: 1st, 3/-; 2nd, 1/9; 3rd, 1/6.

Epping Forest.—Excursion Tickets are issued Daily  
by all Trains from Liverpool Street and Fenchurch Street, to  
Chingford, Woodford, Buckhurst Hill and  
Loughton. Fares: 1st, 3/-; 2nd, 1/2; 3rd, 1/-.

For particulars see bills.

WILLIAM BIRT,  
General Manager.

LONDON, July, 1890.

IF YOU WISH TO OBTAIN THE BEST RESULTS  
ADVERTISE IN

**The Palace Journal**

WHICH IS THE BEST EAST END MEDIUM.

**RALPH & CO.,**  
57, Burdett Rd., Mile End, E.

LADIES' & CHILDREN'S CUT OUT  
**Paper Patterns**  
OF EVERY DESCRIPTION.  
**LATEST FASHIONS.**

BATHING COSTUMES, GYMNASIUM SUITS, MANTLES, JACKETS,  
BOY'S KNICKERBOCKER SUITS, UNDERCLOTHING, &c., &c.

ESTABLISHED 1879.

**C. C. TAYLOR & SON,**  
10 & 12, MILE END RD., E.

SALES BY AUCTION of Every Description of Property.  
VALUATIONS & SURVEYS FOR ALL PURPOSES.  
RENTS COLLECTED AND HOUSE PROPERTY MANAGED.

Insurances Effected in the Phoenix Fire, London and  
General Plate Glass, British Empire Mutual Life, and  
the Accident Insurance Companies.

**CHARLES PAINE,**

Glass Manufacturer,

**39 & 41, WHITEHORSE ST.,**

601, COMMERCIAL ROAD, LONDON, E.,

Has the honour of supplying this popular resort; also the principal  
palaces of amusement in London, suburbs and provinces.

**GREIG & CO.,**

GENERAL

Furnishing Ironmongers and Shipchandlers,

**558, COMMERCIAL ROAD, E.**

(Near Stepney Station).

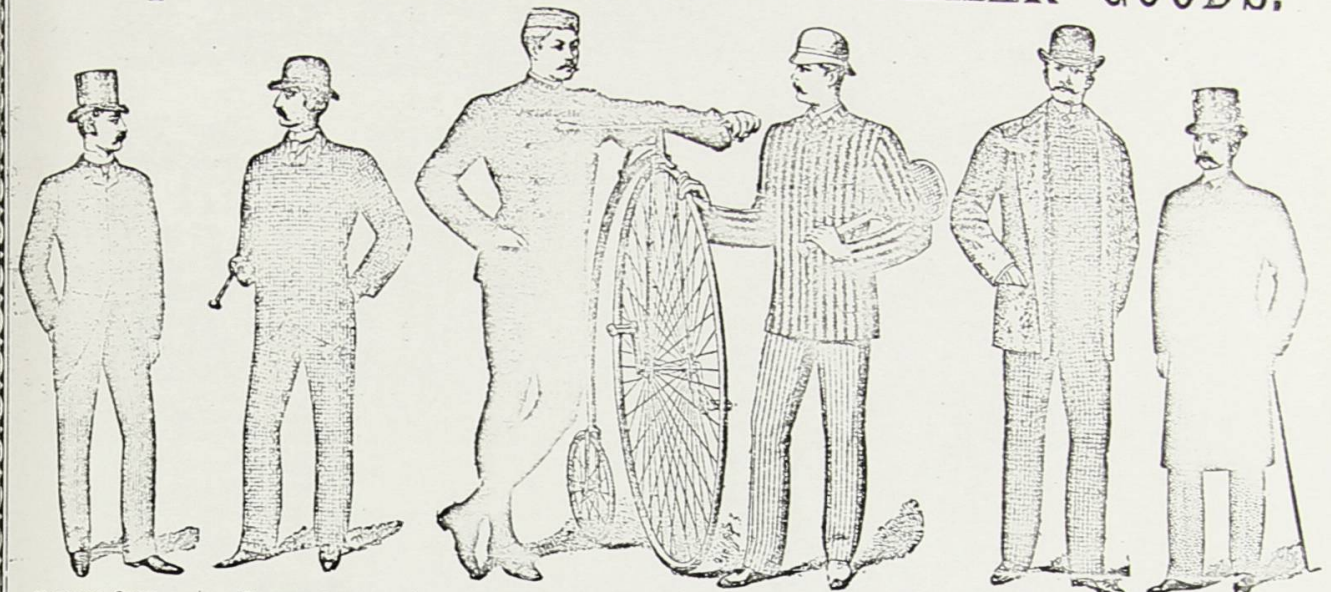
GAS FITTERS, LOCKSMITHS, BELL HANGERS, AND  
HOT-WATER ENGINEERS.

THE  
SCOTCH  
HOUSE.  
Established 1839.

**GARDINER & CO**

THE  
SCOTCH  
HOUSE.  
Established 1839.

Complete Deliveries of NEW SUMMER GOODS.



**MORNING COAT.**  
These suits are made from  
All Wool DIAGONAL Cloth,  
Scotch or S. & W. or Mohair Blend.  
READY-MADE.  
12/11 16 11 21 27 35 42/-  
Cost and Cut.  
16 11 22 6 28 6 35/-  
MADE TO ORDER.  
27/6 35/- with Vest to match,  
35/- 40/- 45/- 50/-

**REEFER SUITS.**  
Made from Best Scotch Tweeds,  
Cheviots and Surges, and also  
from our Novel Unwearable  
Tweeds. Thoroughly well re-  
med. Fit and wear guaranteed.  
READY-MADE.  
16 11 19 11 24 6 29 6  
84 6 39 6 44 6 49 6.  
MADE TO ORDER.  
27 6 35 6 42 45 50 55 63 70/-

**BICYCLE SUIT.**  
TO MEASURE ONLY.  
Made from All Wool Serges  
(Indigo Dye), consisting of Jacket  
and Breeches  
27 6 34 6 39 6 45/-

**LAWN TENNIS SUIT.**  
READY-MADE.  
Striped Flannel Jacket in  
various colours.  
6 11 8 11 10 6 12 6  
Flannel Trousers.  
7 6 10 6 13 6  
Cap to match Jacket.  
1- 16 2-

**COVERT COAT.**  
READY-MADE.  
14 11 16 11 19 11 24 6  
MADE TO ORDER.  
21/- 24 6 29 6 35/- 45/-  
MADE TO ORDER.  
38 6 45/- 50/- 55/- 60/- 70/-  
This is a very fashionable Coat  
for Summer wear, and very  
much worn.

**FROCK COAT.**  
Made from All Wool DIAGONAL  
or PLAIN Cloth. Lined with  
Italian Cloth. Bound Edges. Silk or  
Mohair Blend. Wear guaranteed.  
READY-MADE.  
24 6 29 6 34 6 39 6 44 6  
Vest to Match. 6/- 7 6 9 6  
MADE TO ORDER.  
38 6 45/- 50/- 55/- 60/- 70/-  
Vest to Match. 8 6 10 6 12 6

1, 3 & 5, Commercial Road, & 30 to 35, High Street, Whitechapel, E.

## HEALTH WITHOUT PHYSIC.

INTERESTING FACTS.  
PEOPLE frequently wonder how it is that by wearing Harness'  
Electrostatic Belt, disease may be speedily and effectually  
exterminated from the system. The fact is that the majority of  
suffering men and women have, from their very childhood, been so  
accustomed to fly to nauseous drugs and quack medicines, in the hope  
of obtaining relief whenever they are unwell, that they are now  
naturally inclined to doubt the efficacy of so convenient and simple an  
appliance as this genuine Electric Belt. Let such people once take the  
trouble to inquire into the matter for themselves, and either call or  
write, and have its action fully explained to them, and they will no longer  
be sceptical. The Medical Battery Company, Limited, are the sole  
proprietors and manufacturers of Harness' Electrostatic Appliances,  
and all in search of health are cordially invited to call, if possible, at  
their Electrostatic and Zander Institute, 52, Oxford Street, London,  
W., and personally inspect the originals or copies of the thousands of  
unsolicited testimonials they have received. We do not think that  
those who act on this advice will have any doubt afterwards regarding  
the positive healing influences of mild continuous currents of  
electricity, such as are imperceptibly generated by wearing one  
of Harness' Electrostatic Belts. These curative appliances are  
light and comfortable in wear, and the practical as well as  
scientific evidence we have of their remarkable curative efficacy is  
absolutely indisputable. The Company's consulting officers are only  
too anxious at all times to answer any questions on the subject, either  
personally or by correspondence, and we sincerely trust that their  
efforts to provide suffering humanity with perfect appliances as aids  
to health, and the most approved methods of electrical treatment may  
be amply rewarded in the future as it has been in the past, and that  
the thousands of pounds they spend annually in advertising may be  
the means of preventing the intrusion and fraudulent dealings of  
pirates and vendors of the most useless bogus toy appliances, and bring  
Harness' genuine Electrostatic Belts under the notice of every  
suffering man and woman in the kingdom. We may add that those  
ailments which have been cured already by Mr. Harness' Electrostatic  
treatment can be cured again in the same way, and the more obstinate  
the disease the more anxious the company's officers are to prove the  
marked supremacy of electricity over medicine or any other form of  
treatment. Those of our readers who reside at a distance, or are  
otherwise unable to call and avail themselves of a free personal con-  
sultation, should cut this notice out, and write, without delay, for  
descriptive, illustrated pamphlet and book of testimonials. The latter  
contains copies of hundreds of letters received from all parts of the  
country, and from all classes of society whom they have either  
relieved or completely cured of various nervous, muscular, and  
organic affections, including the following:—  
Nervous Exhaustion, Physical Debility, Neuralgia, Sleeplessness,

Brain Fag, Hysteria, Epilepsy, Melancholia, Paralysis, St. Vitus' Dance,  
Rheumatism, Gout, Sciatica, Lumbago, Defective Circulation, Poor-  
ness of Blood, Indigestion, Diarrhoea, Liver Complaints, Flatulence,  
Constipation, Kidney Disorders, Ladies' Ailments, Internal Weakness,  
Tropical Diseases, Impaired Vitality, Pain in the Back, Weak and  
Languid Feelings, Chest Complaints, Rupture, &c.

We wish to impress upon our readers that the Medical Battery  
Company's only address is the Electrostatic and Zander Institute, 52,  
Oxford Street, London, W. (at the corner of Rathbone Place), and that  
during the many years we have been established in London they have  
succeeded in making their palatial premises the largest and only com-  
plete Electrotherapeutic Institute in the world.

All communications are regarded as strictly private and confi-  
dential, and should be addressed to Mr. C. B. Harness, President of  
the Medical Battery Company, Limited, 52, Oxford Street, London, W.

## AN INTERESTING LETTER.

Mr. Chas. Sibery, 1, Queen Street Lane, Dover, writes, July 9th,  
1890: "I suffered severely from general debility and chronic  
indigestion, and on May 12th last, procured one of your Electrostatic  
Belts, in the hope of being relieved. I am glad to say that after  
wearing it a week there was a decided improvement, and that I am  
now infinitely better. My digestive powers are much stronger, I have  
less lassitude, and, in fact, I may say that I am on the way to a  
perfect restoration."

## EXTRACTS FROM OTHER LETTERS.

Henry Nelson, Esq., 173, Market Street, Birkenhead, writes: "I  
suffered from epilepsy for twenty years; but since wearing your  
Electrostatic Belt I have not had a single attack, nor any appearance  
of my old complaint. My circulation has improved, and I have felt  
better in every respect."

E. Morris, Esq., writing from 46, Medlock Street, Kirkdale, says: "I  
procured one of your Electrostatic Belts for weak back, indigestion,  
and a nervous disorder, the result of a fall, and I am glad to say it has  
already done me a lot of good. My back is better, my appetite is  
much improved, and I am not so nervous."

Mrs. Lashford, 149, Oxford Lane, Warrington, suffered severely  
from lumbago pains and rheumatism. She procured one of Harness'  
Electrostatic Belts, and now writes that she is "well satisfied," the  
appliance having effected "great improvement."

## A BOOK FOR MEN AND WOMEN.

A LITTLE book of considerable interest to both men and women,  
is published (gratis) by the Medical Battery Co., Limited, 52, Oxford  
Street, London, W. It is carefully compiled, and contains much  
valuable information on "The Remarkable Curative Action of  
Electricity," with a special chapter on Mr. Harness' genuine Electro-  
static Belt Appliances. Those who cannot call should write at once  
to the above address, before they forget it. A copy, with book of  
testimonials, will be sent post free on application.