

## **Configuring a device for eduroam using the eduroam Configuration Assistance Tool (CAT).**

The eduroam Configuration Assistance Tool (CAT) enables straightforward configuration of a range of devices for connection to the eduroam service. Use of it ensures that devices are configured correctly and securely for eduroam.

### **Device compatibility.**

eduroam CAT installers are available for:

- Windows Vista/7/8/8.1/10
- Apple MacOS Sierra/High Sierra/Mojave/Catalina
- Apple OS X Lion/Mountain Lion/Mavericks/Yosemite/El Capitan
- Apple iOS 5 and above
- Linux
- Chrome OS
- Android 4.3 and above

### **Pre-requisites.**

You will need your QMUL credentials (username and password), as these are to be entered as part of the configuration process.

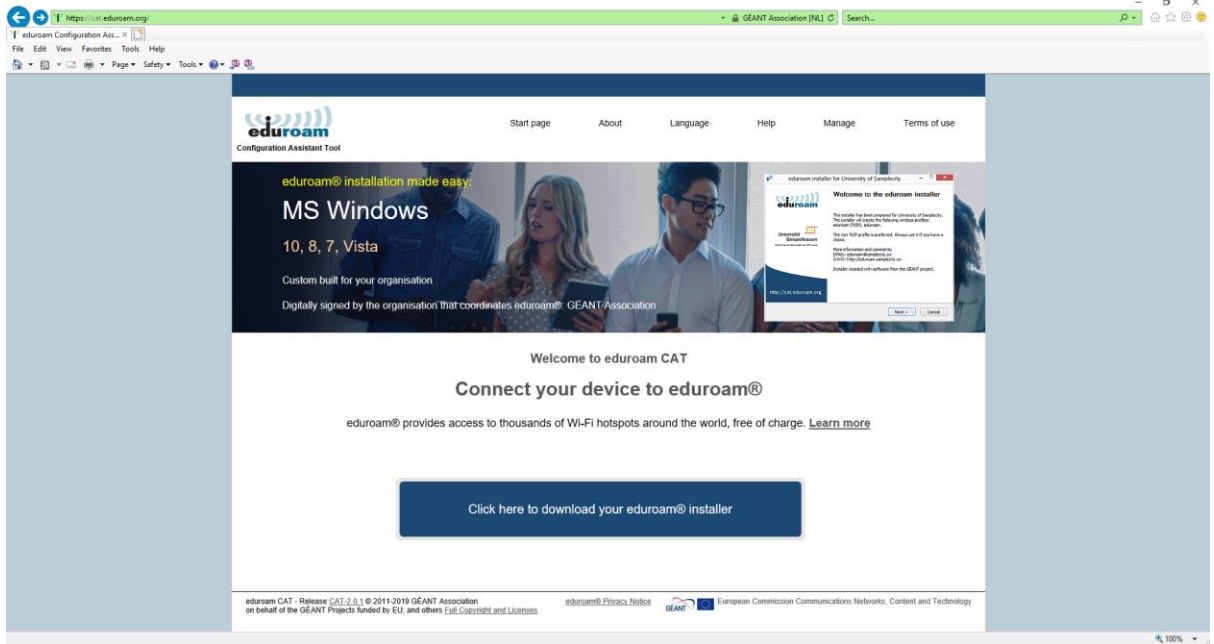
**NB: Before using the eduroam CAT on Android devices you need to have installed the eduroam CAT application - this is available from the Google Play Store and on Amazon (search “eduroam CAT”).**

### **Configuring your device.**

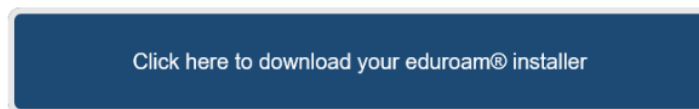
(Note that the screenshots below are examples on Windows 10 – other operating systems will differ in appearance but the information provided/required and the steps involved should remain the same).

Configure your device for eduroam using eduroam CAT as follows:

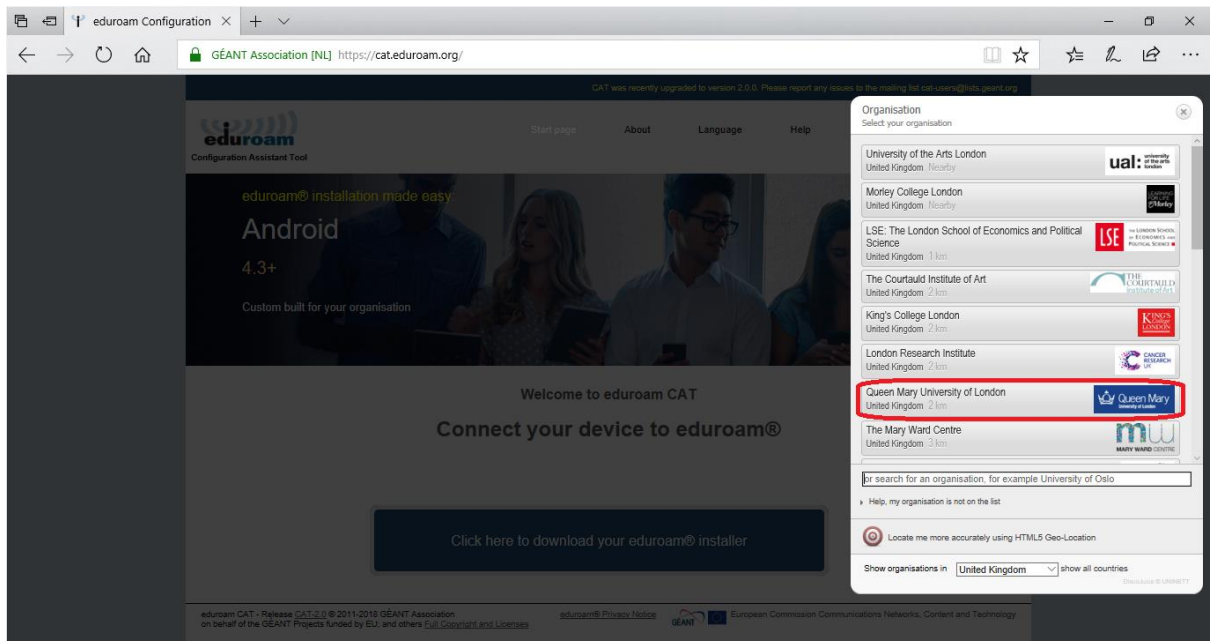
1. Go to <https://cat.eduroam.org/>



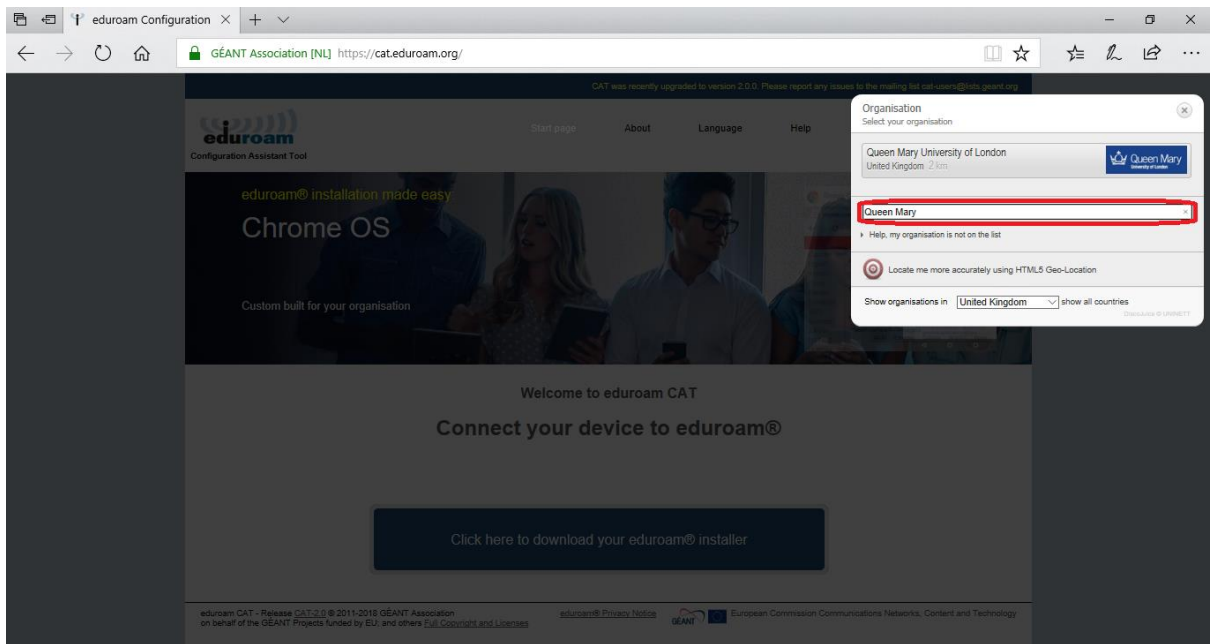
2. Click on



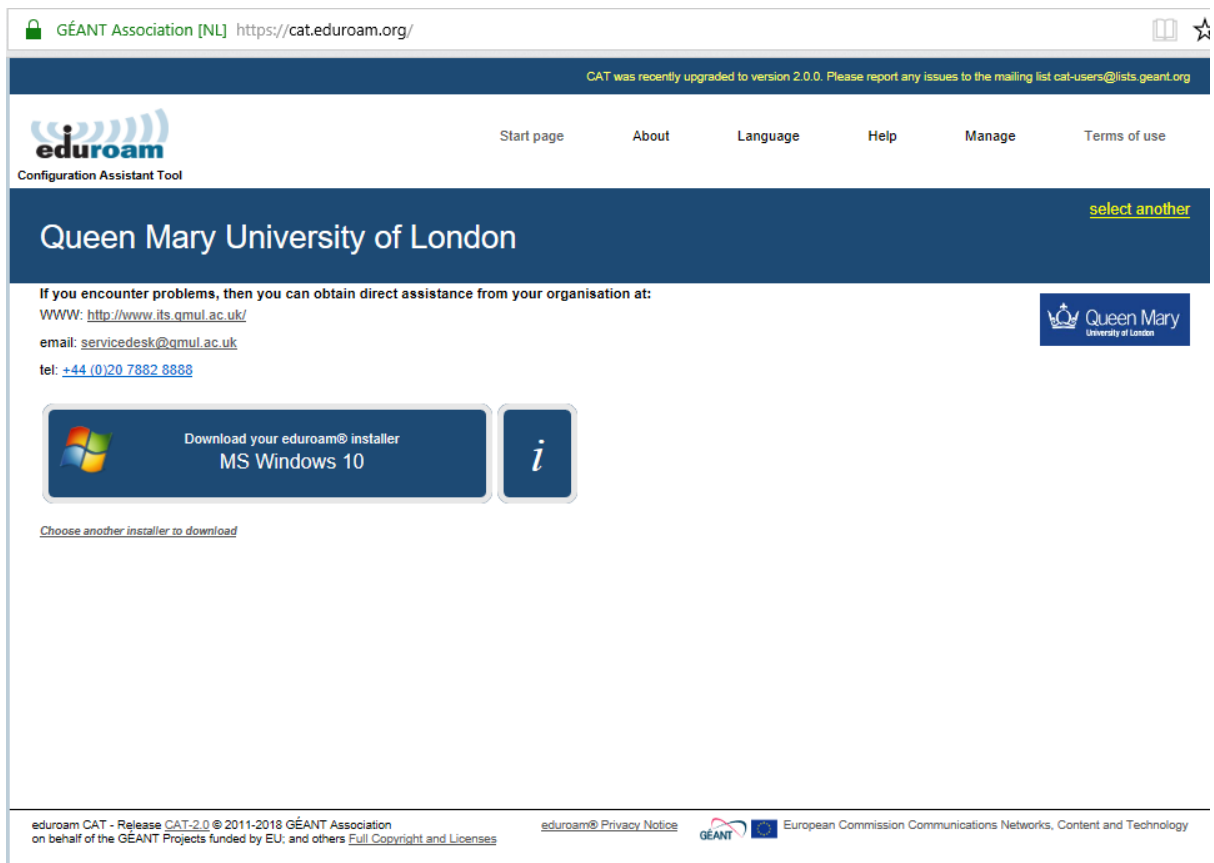
3. In the resulting window, choose *Queen Mary University of London* from the available institutions:



4. If *Queen Mary University of London* is not visible, use the search box to find it:



5. Click on *Queen Mary University of London* - your device operating system should be detected and a link to the appropriate eduroam installer displayed. For example, on Windows 10:



If the operating system required is not shown, click on *Choose another installer to download* to see the list of installers available:

## Queen Mary University of London

[select another](#)

If you encounter problems, then you can obtain direct assistance from your organisation at:

WWW: <http://www.its.qmul.ac.uk/>

email: [servicesdesk@qmul.ac.uk](mailto:servicesdesk@qmul.ac.uk)

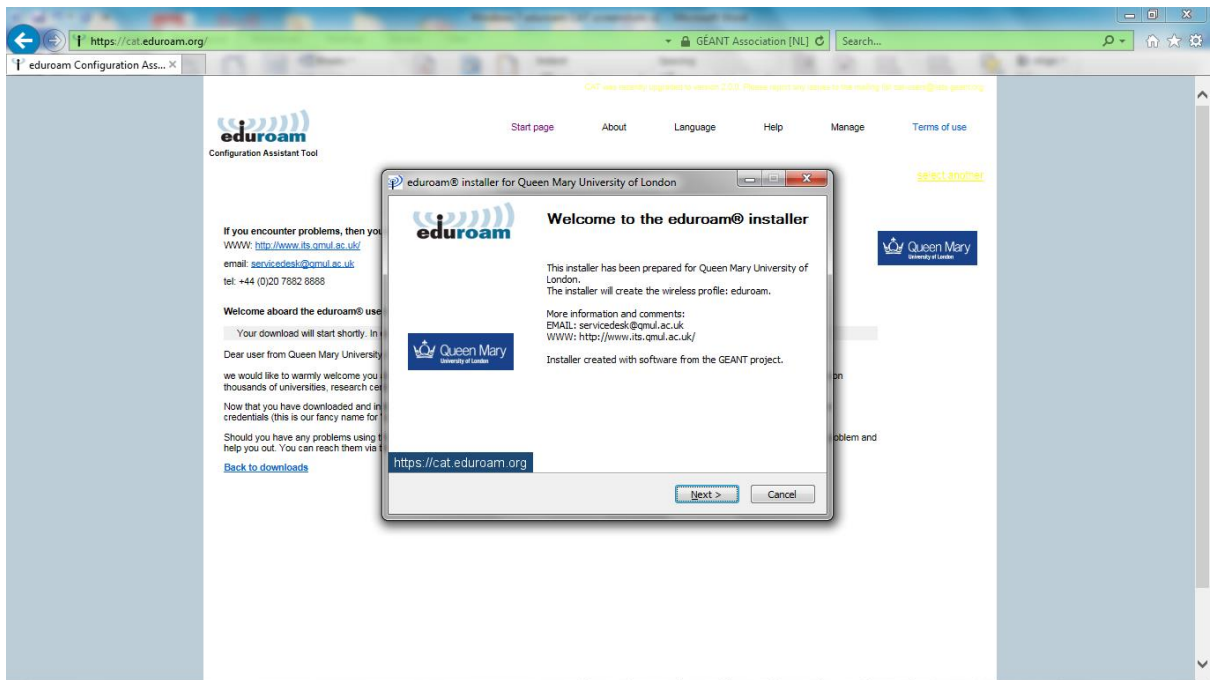
tel: +44 (0)20 7882 8888



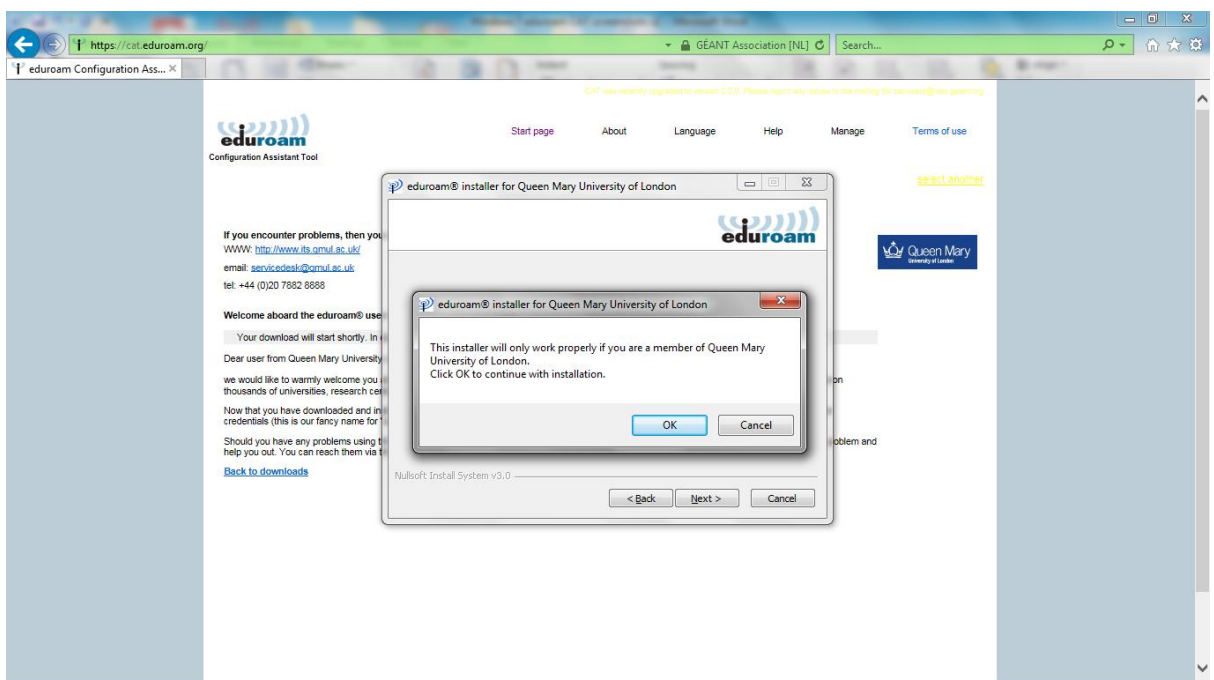
Choose another installer to download

	MS Windows 10	<a href="#">i</a>
	MS Windows 8, 8.1	<a href="#">i</a>
	MS Windows 7	<a href="#">i</a>
	MS Windows Vista	<a href="#">i</a>
	Apple macOS Catalina	<a href="#">i</a>
	Apple macOS Mojave	<a href="#">i</a>
	Apple macOS High Sierra	<a href="#">i</a>
	Apple macOS Sierra	<a href="#">i</a>
	Apple OS X El Capitan	<a href="#">i</a>
	Apple OS X Yosemite	<a href="#">i</a>
	Apple OS X Mavericks	<a href="#">i</a>
	Apple OS X Mountain Lion	<a href="#">i</a>
	Apple OS X Lion	<a href="#">i</a>
	Apple iOS mobile devices	<a href="#">i</a>
	Apple iOS mobile devices (iOS 7-11)	<a href="#">i</a>
	Apple iOS mobile devices (iOS 5 and 6)	<a href="#">i</a>
		Linux
	Chrome OS	<a href="#">i</a>
	Android 10.0 Q	<a href="#">i</a>
	Android 9.0 Pie	<a href="#">i</a>
	Android 8.0 Oreo	<a href="#">i</a>
	Android 7.0 Nougat	<a href="#">i</a>
	Android 6.0 Marshmallow	<a href="#">i</a>
	Android 5.0 Lollipop	<a href="#">i</a>
	Android 4.4 KitKat	<a href="#">i</a>
Android 4.3	<a href="#">i</a>	
<EAP>	EAP config	<a href="#">i</a>

- Click on the appropriate installer for your operating system. If prompted, click on *Run*. Alternatively, you can save the installer and then run it later by double-clicking the saved file.
- When the installer is launched you are presented with a welcome page:

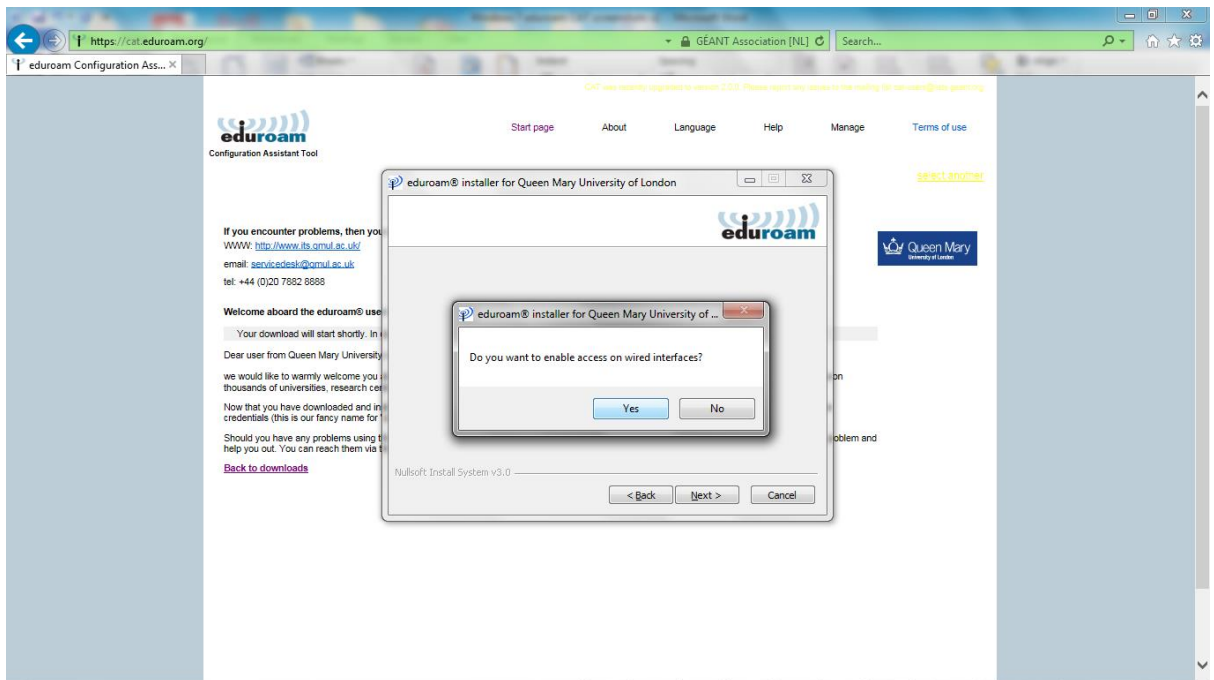


8. Click *Next*. You are presented with a dialogue box stating that the installer will only work properly if you are a member of Queen Mary University of London:



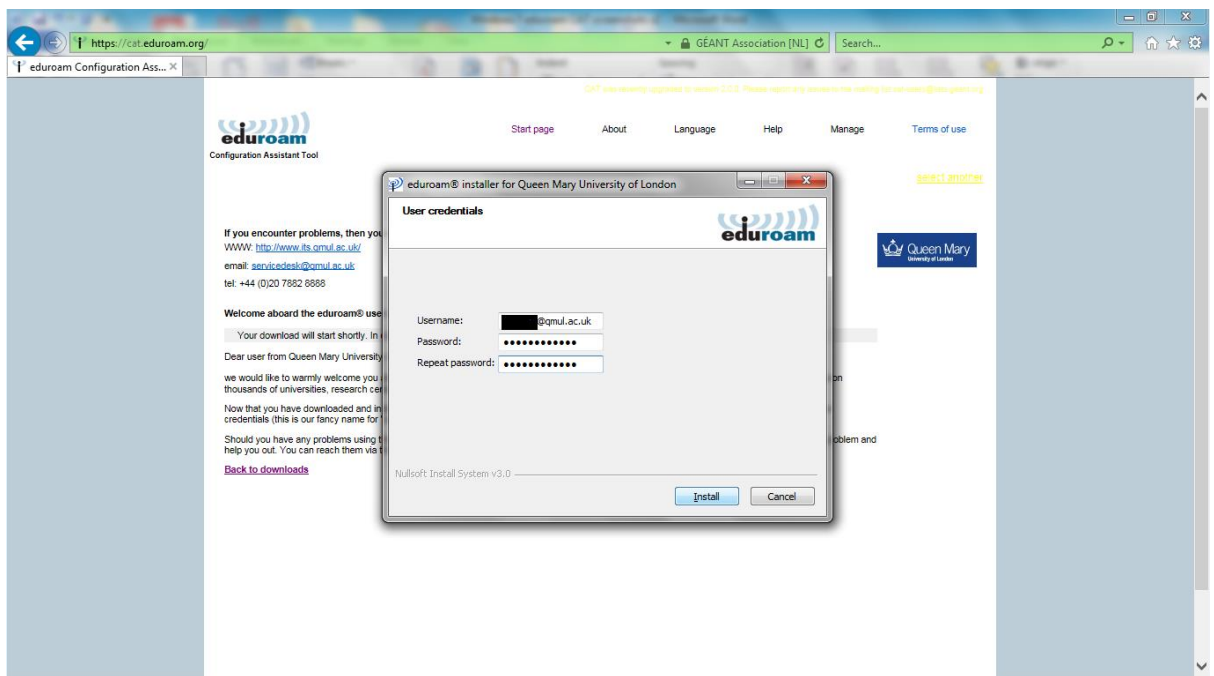
Click *OK*.

9. You are given the option of also configuring wired interfaces:

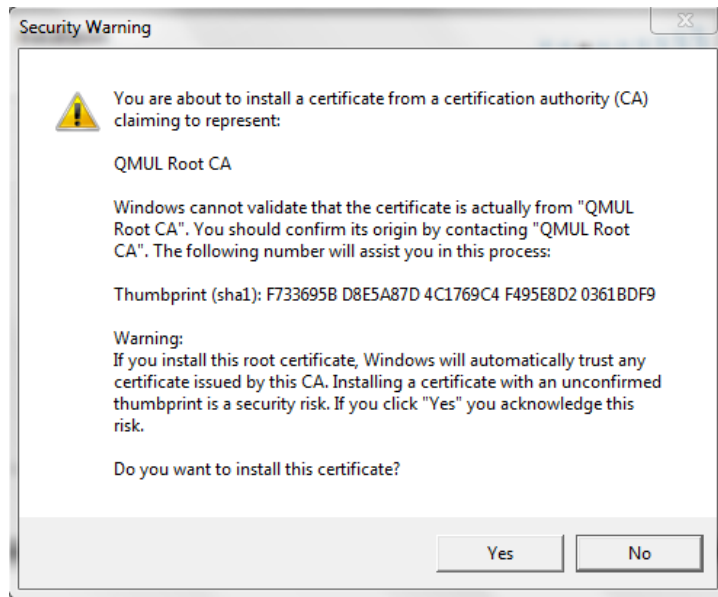


In most cases click on *No* – the option for configuring your device’s wired interface to use 802.1x authentication (the standard used by eduroam) is offered for anyone who specifically wishes to use wired eduroam.

10. You will be prompted to enter your username (you must include the @qmul.ac.uk suffix eg. abc123@qmul.ac.uk, not just abc123) and your password twice:

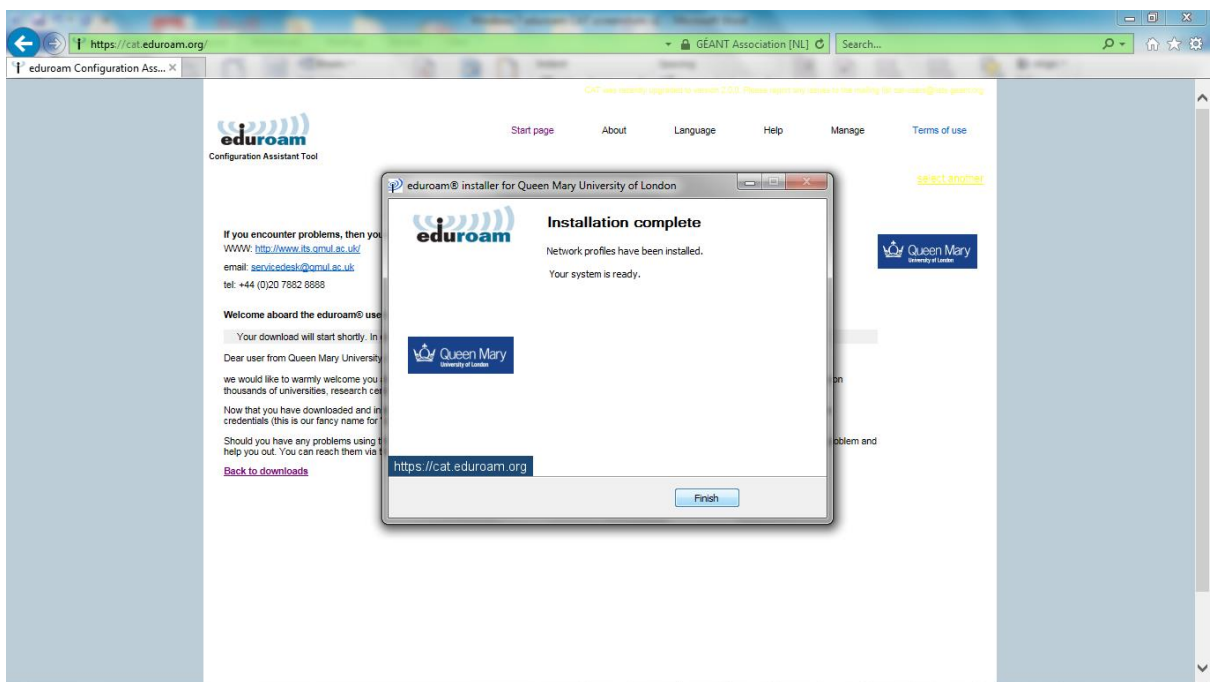


11. Click on *Install*. You will then be prompted to accept the installation of a new certificate as follows:



Confirm the details are as above and then click Yes.

12. The eduroam CAT installer will then install the required certificate and configure your wireless connection for eduroam. You will see confirmation of successful installation:



Click on *Finish*.

You should now be able to authenticate to eduroam.

If you experience any problems using eduroam CAT, or connecting to eduroam, please contact the IT Service Desk on +44 (0)20 7882 8888 or raise a ticket via [servicedesk@qmul.ac.uk](mailto:servicedesk@qmul.ac.uk).