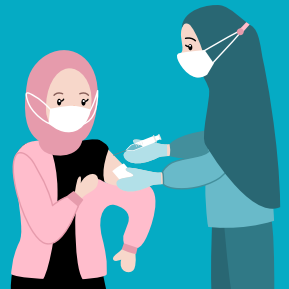


COVER-ME is a research project which explores people's views and experiences of vaccinations in East London. This study will develop a text messaging service which will be utilised by GPs to support people in East London to make informed decisions about Covid-19 vaccinations.

THE VACCINE EXPERIENCE



Vaccine uptake is lower in community groups that are more likely to be socioeconomically disadvantaged. They may have worse access to information about vaccines and health care than those who are better off.



We need volunteers from the community to help us find out more about your experiences with vaccinations.

GROUP DISCUSSIONS & INTERVIEWS

We would hold group discussions and interviews with you and other members of the community to explore your experiences with vaccinations. Importantly, anything you say will remain anonymous and confidential.



DATA IS ANALYSED

Insights from the group discussions and interviews will be analysed into common themes.



A MESSAGING APP

A text messaging service will be co-created with the community and health professionals. The text messaging service will be used by GPs to support people in East London to make informed decisions about Covid-19 vaccinations.



CONTRIBUTION

This research will contribute to doctors' and scientists' efforts to improve vaccine uptake and consequently improve community health.



What is the study about?

This research study examines peoples' experiences and decision-making related to COVID vaccines in the communities of Tower Hamlets and Newham boroughs of East London. The information gained from you will be used to develop an intervention that can support awareness and decisions regarding getting vaccinated.

How can you help?

As a member of an ethnic minority group in East London, we are keen to hear your experiences and views to better understand some of the reasons why the uptake of the COVID vaccine has been lower than expected in this area. We can learn from you what the challenges have been with getting information and understanding the information about the vaccine, as well as some of the other factors that may cause people to reject the vaccine in your community.

Taking part in the study

Your participation in this research will contribute to doctors' and scientists' efforts to improve health in these communities.

To take part in the study, we ask that you:

- Read the participant information sheet provided.
- Answer the follow-up questions to confirm your eligibility and give consent before participating.

Who funds and sponsors the COVER-ME study?

The study is funded by Barts Charity and sponsored by Queen Mary University of London.

For more information or to volunteer, visit
qmul.ac.uk/cover-me