



Queen Mary
University of London

North East London pandemic recovery - Cardiovascular Disease

August 2023

Dr John Robson j.robson@qmul.ac.uk
Clinical Effectiveness Group (CEG)

North East London: Improvement after pandemic

NHS North East London was hit harder than most Integrated Care Boards during the pandemic – CVD/CKD prevention reduced more than most.

However, national CVD Prevent data in March 2023 shows:

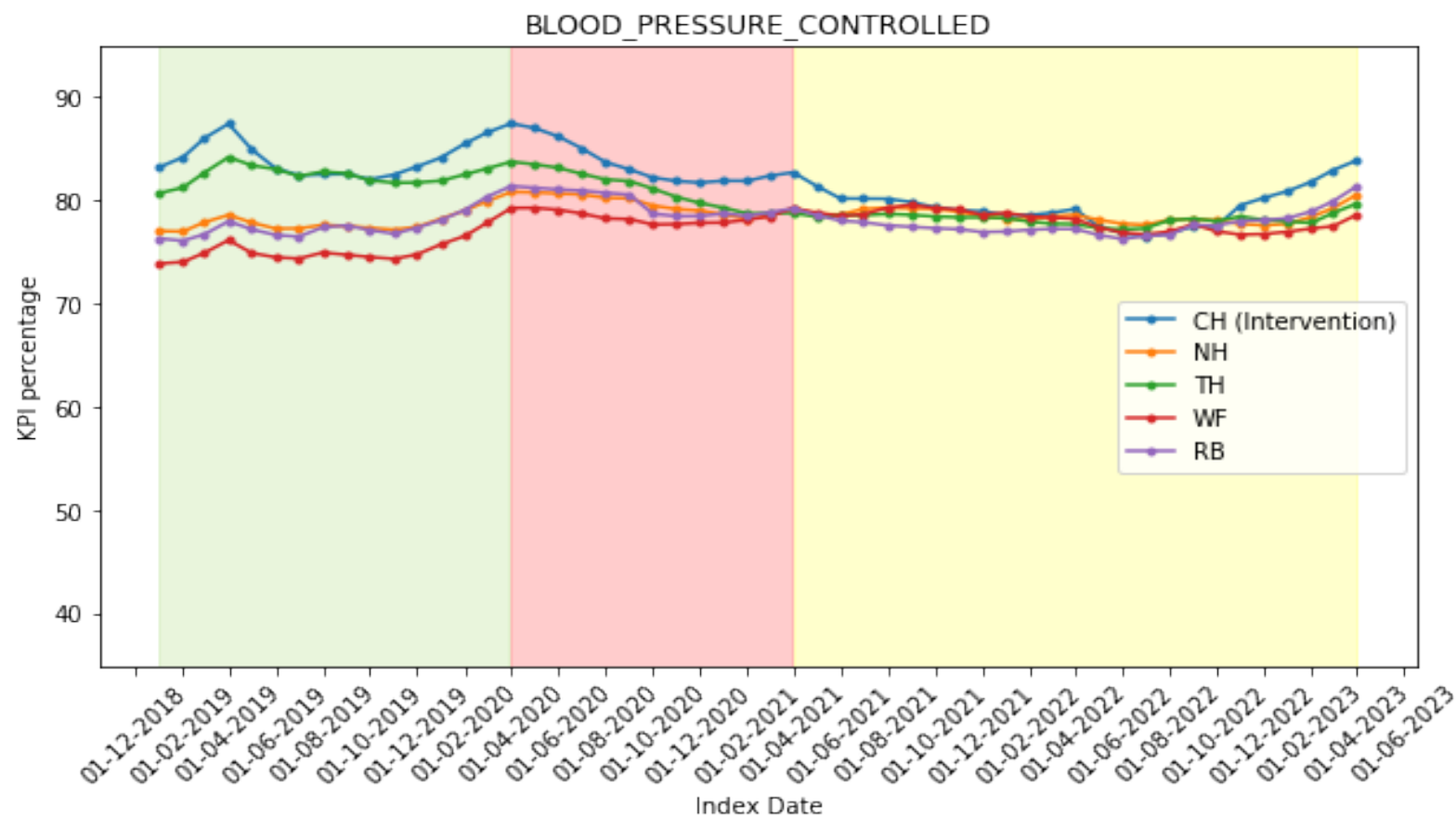
- **North East London best in England for key metrics in CVD/CKD**
- **Blood pressure control in hypertension - top in England**
- **Lipids CVD and primary prevention - top in England**
- **Major improvement in AF anticoagulation - now top ICB in London**
- **2x CKD indicators - 1st & 2nd in England**



Data: [CVD Prevent](#), March 2023

Hypertension control

Hypertension control in North East London localities almost back to pre-pandemic levels



HYPERTENSION MANAGEMENT

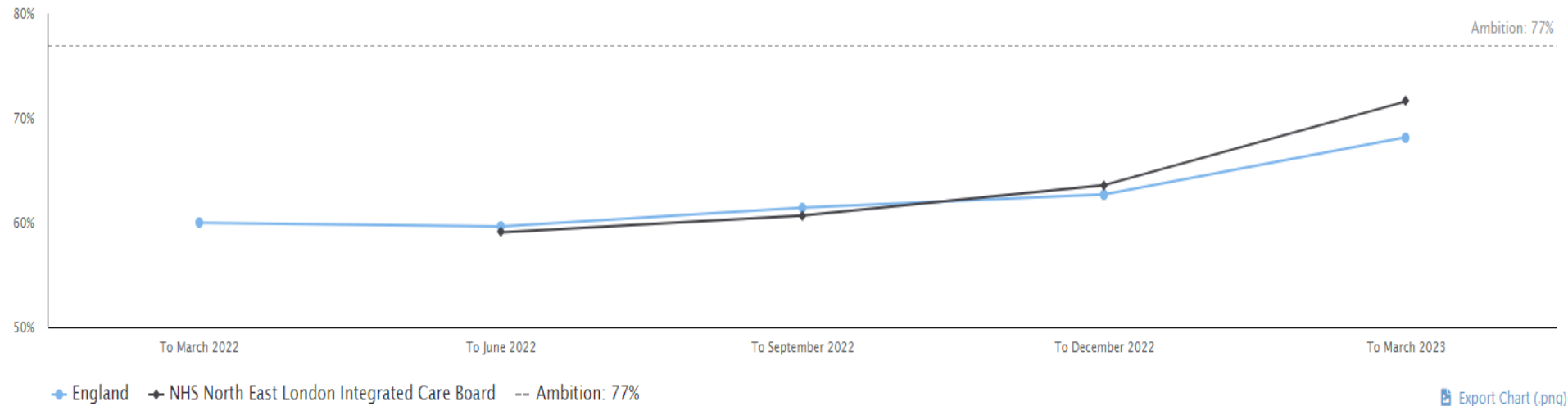
CVDP007HYP: Percentage of patients aged 18 and over, with GP recorded hypertension, in whom the last blood pressure reading (measured in the preceding 12 months) is below the age appropriate treatment threshold.

Data Extract

All Persons Time Series Inequalities Marker Time Series System Level Comparison Area Breakdown

All Persons Time Series: England vs NHS North East London Integrated Care Board

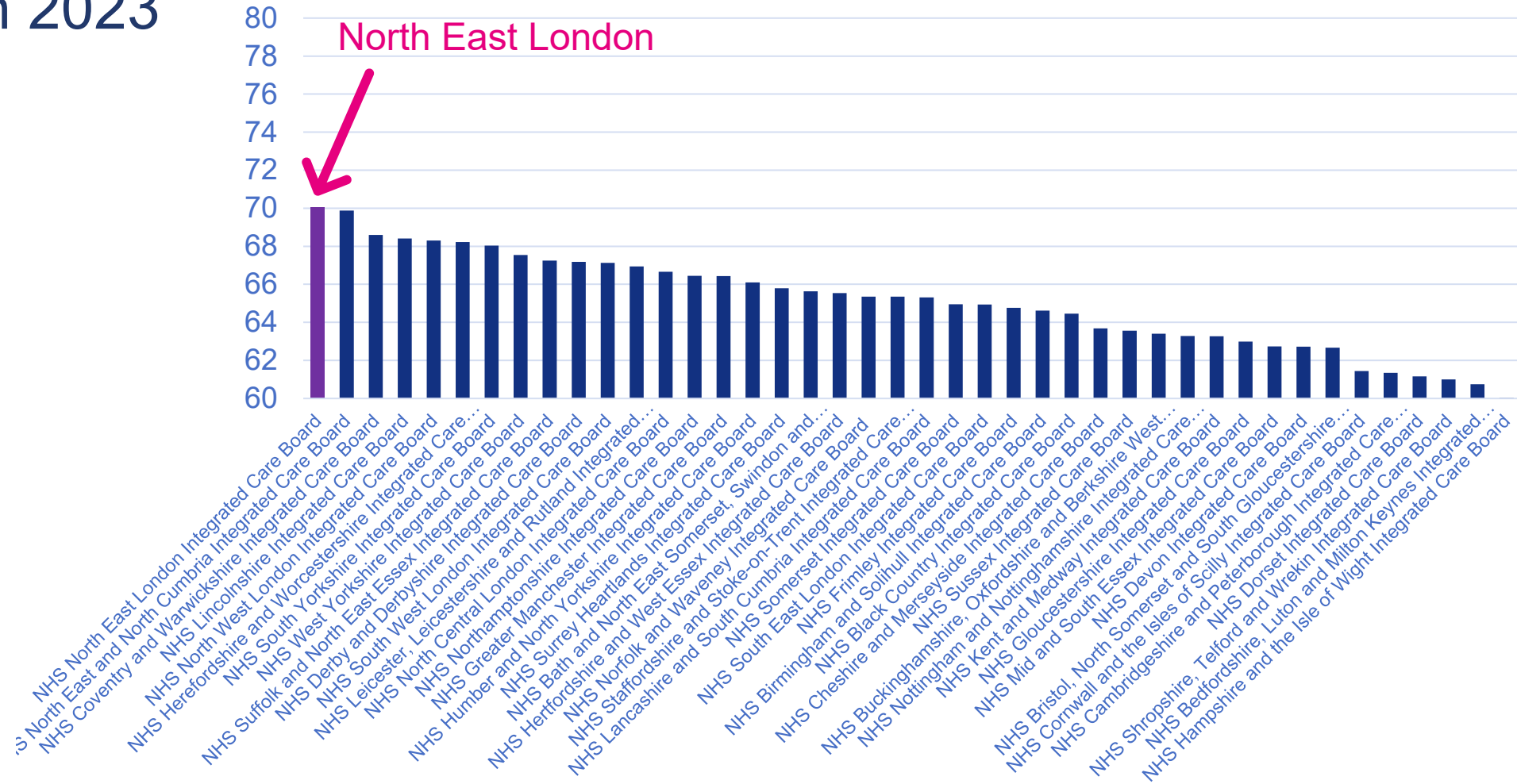
Chart Table



Export Chart (.png)

Hypertension controlled <140/90 18-79 years

March 2023



Lipid control

CHOLESTEROL MANAGEMENT

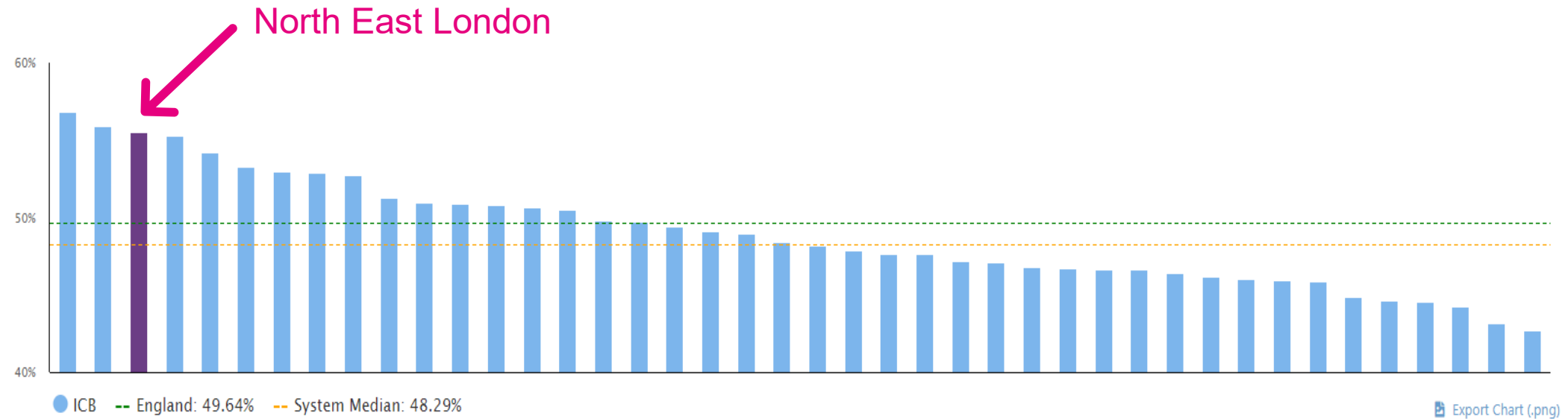
CVDP006CHOL: Percentage of patients aged 18 and over with no GP recorded CVD and a GP recorded QRISK score of 10% or more, on lipid lowering therapy

Data Extract

All Persons Time Series Inequalities Marker Time Series **System Level Comparison** Area Breakdown

System Level Comparison: NHS North East London Integrated Care Board against other ICBs
March 2023

Filter ▾ Chart Table



CHOLESTEROL MANAGEMENT

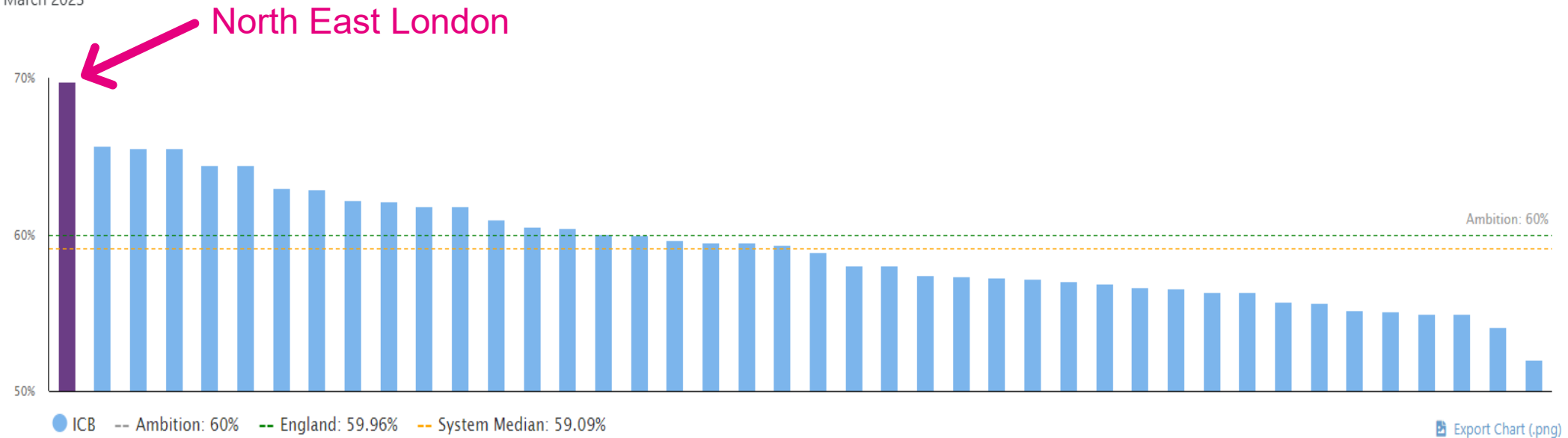
CVDP003CHOL: Percentage of patients aged 18 and over with no GP recorded CVD and a GP recorded QRISK score of 20% or more, on lipid lowering therapy

Data Extract

All Persons Time Series Inequalities Marker Time Series **System Level Comparison** Area Breakdown

System Level Comparison: NHS North East London Integrated Care Board against other ICBs
March 2023

Filter Chart Table



HYPERTENSION MANAGEMENT

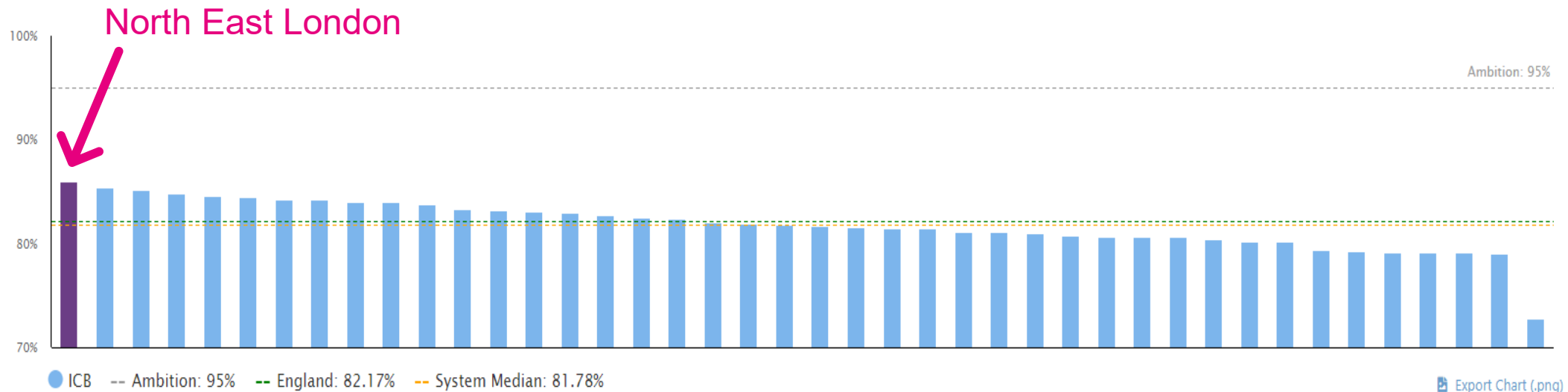
CVDP009CHOL: Percentage of patients aged 18 and over with GP recorded CVD (narrow definition), who are currently treated with lipid lowering therapy.

Data Extract Metadata

All Persons Time Series Inequalities Marker Time Series **System Level Comparison** Area Breakdown

System Level Comparison: NHS North East London Integrated Care Board against other ICBs
March 2023

Filter Chart Table





Queen Mary
University of London

Atrial fibrillation anticoagulation

- Exceptional improvement!

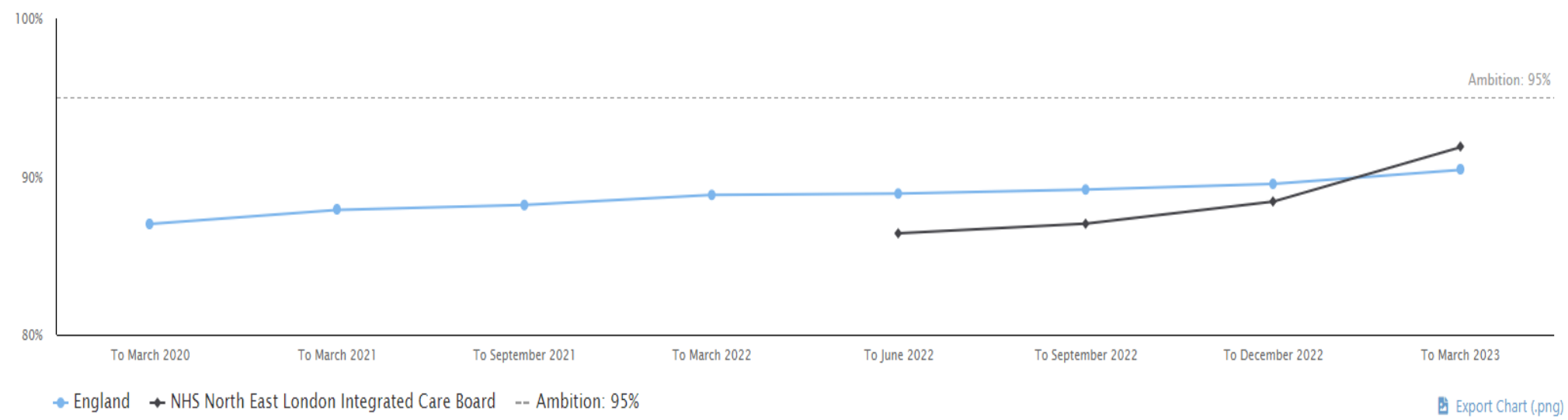
CVDP002AF: Percentage of patients aged 18 and over with GP recorded atrial fibrillation and a record of a CHA2DS2-VASc score of 2 or more, who are currently treated with anticoagulation drug therapy

Data Extract

All Persons Time Series Inequalities Marker Time Series System Level Comparison Area Breakdown

All Persons Time Series: England vs NHS North East London Integrated Care Board

Chart Table



Export Chart (.png)

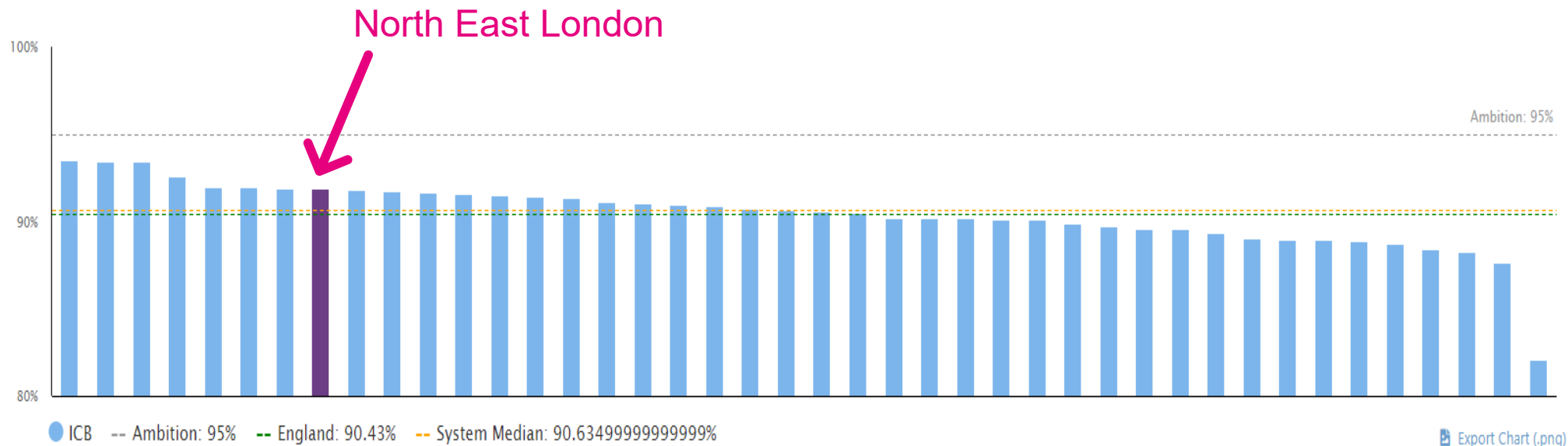
CVDP002AF: Percentage of patients aged 18 and over with GP recorded atrial fibrillation and a record of a CHA2DS2-VASc score of 2 or more, who are currently treated with anticoagulation drug therapy

Data Extract

All Persons Time Series Inequalities Marker Time Series **System Level Comparison** Area Breakdown

System Level Comparison: NHS North East London Integrated Care Board against other ICBs March 2023

Filter ▾ Chart Table



Chronic Kidney Disease

CHRONIC KIDNEY DISEASE MANAGEMENT

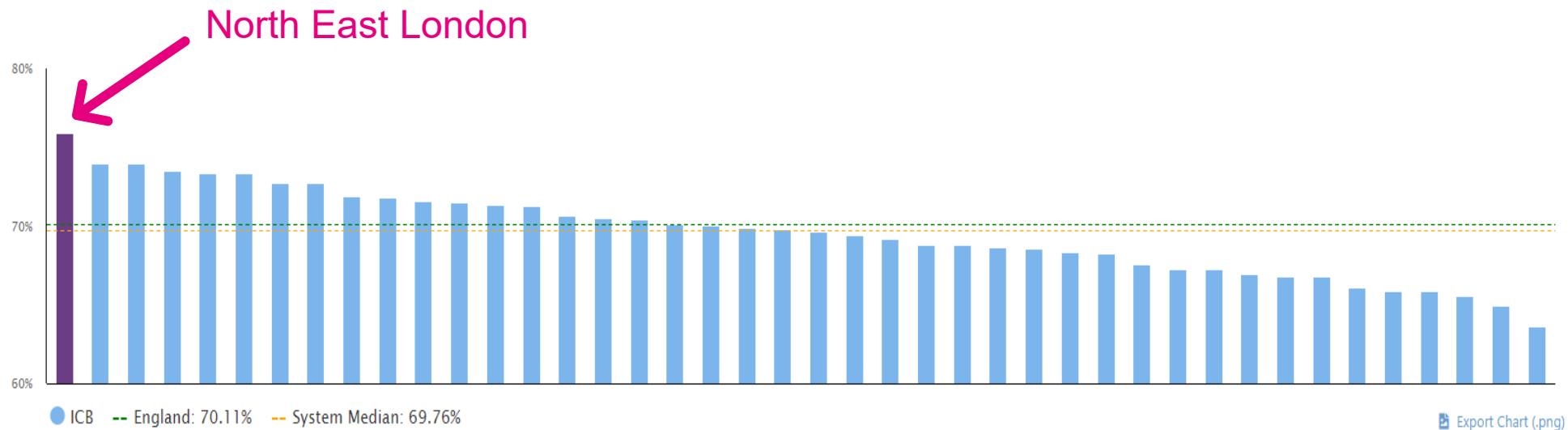
CVDP007CKD: Percentage of patients aged 18 and over with GP recorded CKD (G3a to G5) with an ACR of less than 70 mg/mmol, in whom the last blood pressure reading (measured in the preceding 12 months) is less than 140/90 mmHg.

Data Extract

All Persons Time Series Inequalities Marker Time Series **System Level Comparison** Area Breakdown

System Level Comparison: NHS North East London Integrated Care Board against other ICBs
March 2023

Filter ▾ Chart Table



CVDP010CHOL: Percentage of patients aged 18 and over with GP recorded CKD (G3a to G5), who are currently treated with lipid lowering therapy.

Data Extract

All Persons Time Series Inequalities Marker Time Series **System Level Comparison** Area Breakdown

System Level Comparison: NHS North East London Integrated Care Board against other ICBs March 2023

Filter ▾ Chart Table

