

Covid-19 vaccination programme – CEG support for BHR GPs

Jo Tissier

Senior Primary Care Facilitator CEG

Keith Prescott

CEG Manager

22nd February 2021



What we will cover in this session

- Understanding eligibility
- Using CEG call/recall searches
- Managing patient hesitancy and deferrals
- Understanding data flows between systems
- How well are you doing?
- Actions you need to do
- Ethnicity
- FAQs

Who is eligible and in which order

9 priority cohorts – decided by the JCVI & listed in the Green Book

Priority group	Risk group
1	Residents in a care home for older adults Staff working in care homes for older adults
2	All those 80 years of age and over Frontline health and social care workers
3	All those 75 years of age and over
4	All those 70 years of age and over Clinically extremely vulnerable individuals (not including those under 16 years of age)
5	All those 65 years of age and over
6	Adults aged 16 to 65 years in an at-risk group (Table 3)
7	All those 60 years of age and over
8	All those 55 years of age and over
9	All those 50 years of age and over

Issues identifying who is eligible

- Health and social care workers – coding issues. No call required
- Care home – coding issues.
- Cohort 4 – (70+ or CEV)– easily identified as being coded High Risk Category for developing complications
- Cohort 6 – (16-65) in an at risk group. Until very recently no business rules, so open to interpretation. CEG adopted a ‘flu plus’ model based on the Green Book narrative. Now we are updating to new rules – less patients included.

How do I know who to call?

CEG - WF (2150)

COVID 1st Vaccine call recall v8 1 (38)

- ◆ COVID Specific vaccine codes (5)
- ◆ COVID19 At Risk conditions PHE Aligned (14)
- ◆ Criteria (13)
- ◆ Data Quality (2)
- ◆ Invites (1)

CEG Redbridge (1808)

- ▷ CEG BHR Dashboard
- ▷ CEG BHR Subsearches (1)
- ▷ CEG BHR Support Searches
- ▷ CEG COVID19
- ▷ CEG Learning Disability Support Searches

COVID 1st vaccine call recall v8 1 (38)

- ◆ COVID Specific vaccine codes (5)
- ◆ COVID19 At Risk conditions PHE Aligned (14)
- ◆ Criteria (13)
- ◆ Data Quality (2)
- ◆ Invites (1)

CEG Barking (2159)

- ▷ CEG BHR Dashboard
- ▷ CEG BHR Subsearches (1)
- ▷ CEG BHR Support Searches
- ▷ CEG COVID19
- ▷ COVID 1st Vaccine uptake PERFORMANCE 2 (54)

COVID 1st vaccine call recall v8 1 (38)

- ◆ COVID specific vaccine codes (5)
- ◆ COVID19 At Risk conditions PHE aligned (14)
- ◆ Criteria (13)
- ◆ Data Quality (2)
- ◆ Invites (1)

Why should I use CEG searches not others?



1. Designed with the needs of our local patients in mind
2. Avoid occupation data errors
3. Do not exclude pregnant women from recall
4. Provide csv files for AccuBook
5. Responsive to changing parameters

Managing hesitancy and deferrals

Pinnacle will enter a declined code in the patient record in situations where there was not actual 'declined' but temporary hesitation for example.

New CEG template will facilitate the process at the practice and we will provide extra searches to follow them up

2. Vaccination Deferred

If patient defers to have the vaccination, for example, is pregnant or unwell, or patient is hesitant and needs further reassurance, tick both boxes below and record the reason why the patient has deferred.

First Vaccination Deferred

SARS-CoV-2 vaccination dose declined

AND

Treatment delay - patient choice

Second Vaccination Deferred

SARS-CoV-2 vaccination dose declined

AND

Treatment delay - patient choice

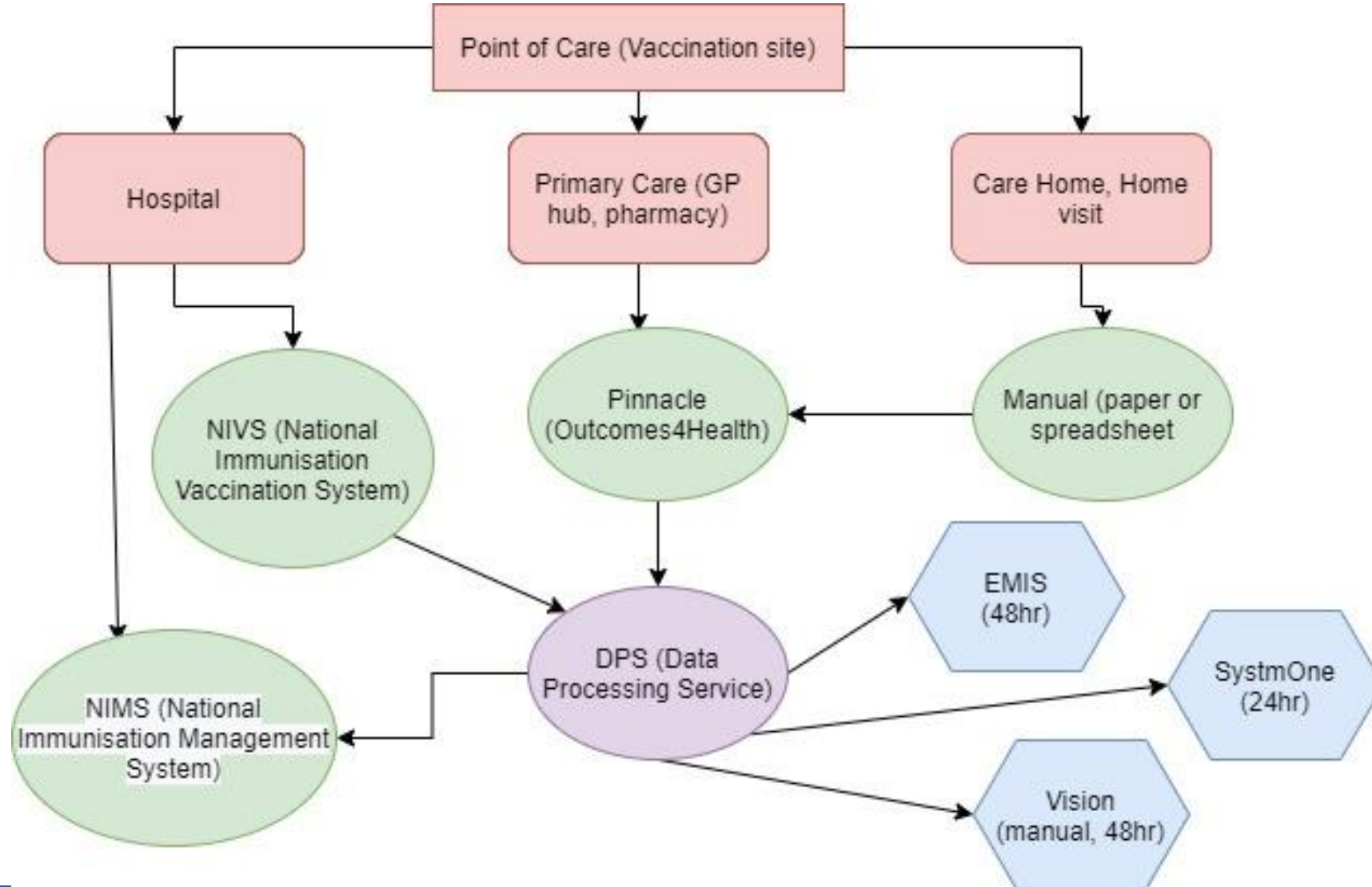
If patient defers remember to:

- Signpost to information
- Advise how to book if change their mind
- Advise appointment will be offered again some time in the future

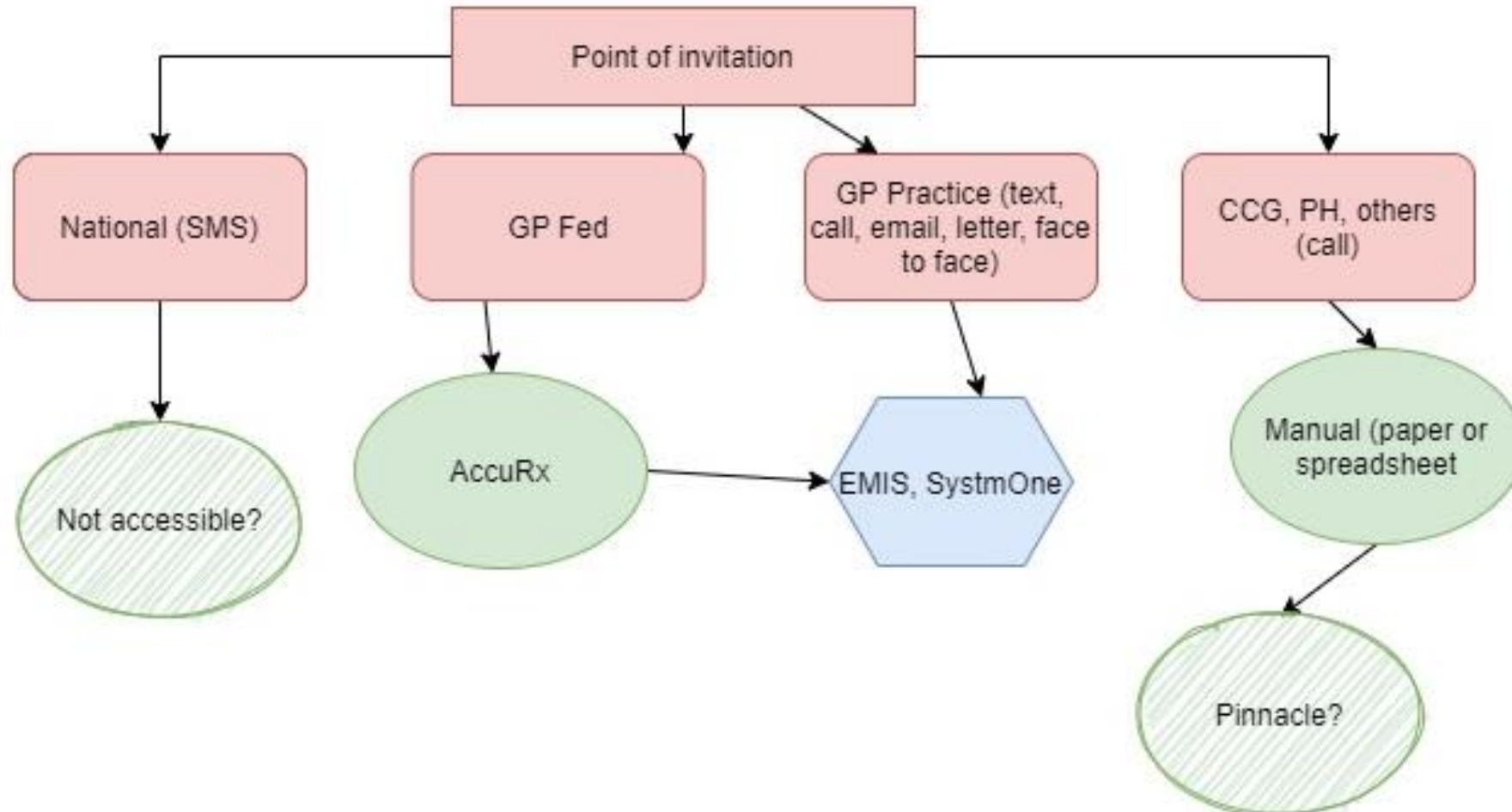
3. Attempted contact 3 times no response

Record each time you have attempted to invite the patient, after 3 unsuccessful attempts you may record as declined.

Data flows between systems: vaccination



Data flows between systems: invitations



How well are you doing?

- CEG - WF (2150)
 - COVID 1st Vaccine call recall v8 1 (38)
 - COVID 1st vaccine uptake PERFORMANCE 2 (54)**
 - COVID19 At Risk conditions PHE Aligned (14)
 - COVID19 Specific vaccine codes (6)
 - Criteria (12)
- CEG Redbridge (1808)
 - CEG BHR Dashboard
 - CEG BHR Subsearches (1)
 - CEG BHR Support Searches
 - CEG COVID19
 - CEG Learning Disability Support Searches
 - COVID 1st vaccine call recall v8 1 (38)
 - COVID19 1st vaccine uptake PERFORMANCE 2 (54)**
 - COVID19 At Risk conditions PHE Aligned (13)
 - COVID19 Specific vaccine codes (6)
 - Criteria (12)

- CEG Barking (2159)
 - CEG BHR Dashboard
 - CEG BHR Subsearches (1)
 - CEG BHR Support Searches
 - CEG COVID19
 - COVID 1st Vaccine uptake PERFORMANCE 2 (54)**
 - COVID19 At Risk conditions PHE Aligned (14)
 - COVID19 Specific vaccine codes (6)
 - Criteria (12)

What you need to do now

1. Clean up your care home register (even if you think you do not have one!)
2. Check your cohort 6 (Covid moderate risk) and tell us if something is not right
3. Check if your housebound register is up to date
4. Check, over 70s and high risk and housebound
5. Mop up cohorts 2-4 by the end of the week by calling those without a recorded invite

Ethnicity



Ethnicity recording – now statutory requirement - biggest gaps are in new registrations and the under 5s. Self-reported.

Black Caribbean – strong predictor of vaccine hesitancy

CEG offers: template page, alerts, search, NEL wide analysis

FAQs

- How do we handle 16-17 year olds who are at risk?
- What about pregnant women?
- Why does my CCG say my achievement is lower than I know it is?
- Who can I contact if I don't understand how to use the searches?
- Why have I got younger patients vaccinated if I have not called them?
- How can I record telephone/letter/verbal/email invites?

Any questions? Any requests?



CEG Support



<https://www.qmul.ac.uk/blizard/ceg/covid/covid-vaccination/>

Newham: p.kallah@qmul.ac.uk

City and Hackney: l.o.rivastaquias@qmul.ac.uk

Waltham Forest: f.wilkins@qmul.ac.uk

Tower Hamlets: a.gutierrez@qmul.ac.uk

BHR: b.corfield@qmul.ac.uk; t.gibbons@qmul.ac.uk