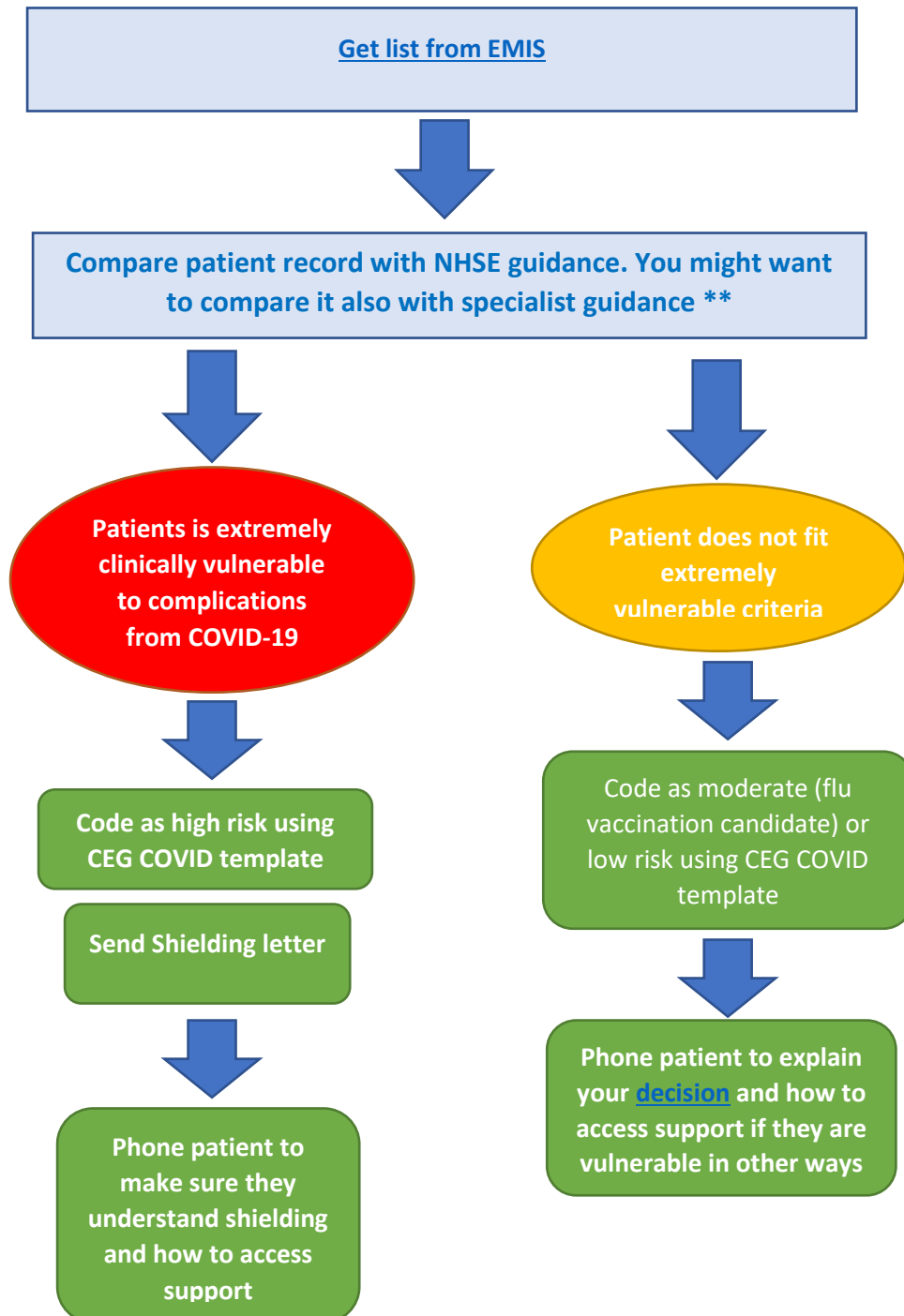


Self-referring patients – NHSE guidance for GP practices:

[Click here](#)



*** EMIS instructions to get list**

[click here](#)

Reporting > Population Reporting > *your practice name* > EMIS Health: COVID-19 searches

The screenshot shows the EMISWebCR1 50002 interface. The left sidebar has a blue header with 'EMISWebCR1 50002' and two items: 'EMISWebCR1 50002' and 'EMIS Health: COVID-19 searches'. The main area has a 'Name' column with two rows: 'COVID-19 self-referring patients' and 'Self-referring patients still to be risk assessed'. Three callouts are present: a red one pointing to the sidebar header, a green one pointing to the first row, and an orange one pointing to the second row.

In our test system, 'EMISWebCR1 50002' functions as the organisation name; in your live system, this will be your practice name.

These are the patients who have self-referred.

These are the patients who have self-referred but not yet been coded.

**** Specialist guidance:**

[British Society for Rheumatology](#)

[The Renal association](#)

[British Society of Gastroenterology](#)

[Association of British Neurologists](#)

[British Association of Dermatologists](#)

[British Thoracic Society](#)

[Royal College of Ophthalmologists](#)

[Royal College of Paediatrics and Child Health](#)