

Annual Review



2006

 Queen Mary
University of London

Celebrating
125 years of achievement



Written and edited by Kate Hunter
Contact: k.a.hunter@qmul.ac.uk
Corporate Affairs, Queen Mary, University of London
www.qmul.ac.uk



Queen Mary, University of London

Queen Mary is one of the largest colleges of the University of London and is, in its own right, one of the United Kingdom's leading research and teaching higher education institutions.

Queen Mary has almost 13,000 students studying for postgraduate and undergraduate degrees in a wide range of disciplines: the Humanities, Social Sciences and Laws; Engineering and Computer Science; Mathematical and Natural Sciences; and Medicine and Dentistry.

The main Mile End Campus is home to most non-medical departments and Queen Mary is unique amongst University of London colleges in being able to offer its students the benefit of an integrated residential central London campus. Queen Mary also has three other campuses which are home to Barts and The London, Queen Mary's School of Medicine and Dentistry, and the School of Law.

Teaching at Queen Mary is distinctively innovative, combining traditional academic rigour and intellectual challenge with a modern approach to the design of degree options and teaching and learning styles. Among the current pioneering degree programmes are those in e-Commerce Engineering, Digital Audio and Music System Engineering and Journalism and Contemporary History.

The achievements of Queen Mary have been recognised in a number of ways by official bodies. The latest national Research Assessment Exercise (RAE), conducted by the Higher Education Funding Council in 2001 affirmed the College's leading status with 80 per cent of departments judged to be in the top two categories of national or international research excellence.

Queen Mary was recently awarded a substantial increase in teaching and research funding by the Higher Education Funding Council for England (HEFCE). This growth in investment is part of a continuing trend, which has seen Queen Mary's HEFCE research funding allocation rise by more than 70 per cent over the last three years. Queen Mary has invested over £200 million in its estate and facilities, further enhancing its position as a highly attractive destination for students from the UK and around the world.

Contents

Statement from the Chairman of Council	6
Statement from the Principal	8
News in Brief 2006	10
Teaching and Learning	14
Research	22
Our International role	32
London and the Thames Gateway	38
Resources – people, facilities and balancing the books	46
Staff and student awards	52
Finance	54
Facts and figures	55
Honorary fellows and graduates	56
Who's who	58



Statement from the Chairman of Council



This *Annual Review* of the year 2006 represents a snapshot of the continual development of Queen Mary, University of London. Substantial investment in our campus has succeeded in helping increase our desirability within the student marketplace, and greater numbers of students have led to higher teaching funds from the Higher Education Funding Council for England (HEFCE). 2006 saw a 15.4 per cent rise in funds for teaching and research, one of the highest increases amongst British universities.

Whilst pursuing its own successful research and recruitment strategies, Queen Mary remains an active member of the federal University of London. As the third largest multi-faculty college within the University, Queen Mary is positively contributing to the development of its new constitution, which aims to add value to the work and missions of all the constituent institutions. Queen Mary's Principal, Professor Adrian Smith, was appointed Deputy Vice-Chancellor of the University of London in 2006, and I would like to take this opportunity to congratulate him on this significant post, which is helping to shape the future of the federal university.

2006 was also significant as the year when our partners in the College's principal teaching hospitals associated with our School of Medicine and Dentistry, Barts and the London NHS Trust, received the go-ahead from the Department of Health to commence the private finance initiative scheme for the redevelopment of their sites. Following a period of review, the green light for the largest hospital development in the United Kingdom was authorised in February 2006. The consequences of this project are particularly significant for members of staff in our School of Medicine and Dentistry. Notably, Barts Hospital will become a Cancer and Cardiac Centre of Excellence, with considerable clinical and research overlap with the College's Institute of Cancer, William Harvey Research Institute and the Wolfson Institute, all based at the adjacent Charterhouse Square campus. We hope to continue to develop our relationship with Barts and the London and as an academic partner we support its application for Foundation Trust status and the associated Academic Health Sciences Centre. We also work closely with other partners in the healthcare sector, and in December 2006, Queen Mary was successful in a combined bid with King's College London and St George's Hospital Medical School to form a Biomedical Research Centre with funding from the Department of Health.

A review of the structure and effectiveness of the College Council was completed in 2006. Chaired by Baroness Murphy of Aldgate, a former member of the Council, the working party concluded that the Council was properly fulfilling its statutory duties with regard to corporate governance and the strategic development of the College. It recommended that the Council's committee

structure be strengthened and rationalised with more decision-making devolved to committees so that the Council itself could concentrate on its strategic and governance role. The Council was happy to accept these recommendations. Two new committees have been established: a Student Affairs Committee and my own Chairman's Committee. I am most grateful to Baroness Murphy and members of her committee for this important study.

I would like to pay tribute to two individuals who left us this year: both were closely involved with the workings of the Council. Deputy Warden of the School of Medicine, Professor Peter Kopelman has now moved to the University of East Anglia, and Registrar and Secretary to Council, Peter Holiday, who retired in 2006. Both were true servants to the College and we thank them for their commitment and endeavours.

In a year when we introduced the National Pay Framework, the Council also approved a proposal to ensure that staff, including those employed by contractors, are paid a 'London living wage' of £6.70 an hour.

It is my pleasure as Chairman of Council to oversee the committee that approves the Honorary Fellowships which are bestowed on individuals who have made a significant contribution to enhancing the work of the College. In 2006, the following persons became a Fellow of Queen Mary, University of London: Dr Frank Fitzgerald CBE, Roger A Henderson QC, Jack Petchey OBE, Professor Dame Lesley Rees, DBE and The Dowager Lady (Ursula) Westbury CBE. Honorary degrees were awarded to Professor Gustav Born FRS, Sir Martin Holdgate CB and Professor George Steiner FBA.

On a sad note, I cannot conclude my review of 2006 without paying tribute to Laura Blomeley who died from cancer, aged 23, in February. A former Queen Mary Students' Union President, Laura was an exceptional young woman. She was passionate about helping others, and committed to standing up for what she believed. In my role as Chairman of Council, I frequently had meetings with Laura as SU President, and she impressed me deeply. Mature beyond her years, she also accomplished many things, notably working on the final phase of the development of the Westfield Student Village which has just been completed. Laura was a most impressive individual whose leadership of the Students Union was an outstanding achievement.

Dr Colette Bowe,
Chairman of Council

Reflection on the past year and looking forward

2006 was my eighth year as Principal of this exceptional institution. This period spent working with the outstanding colleagues who make this place the innovative, inspiring and collegiate institution it is, offers me the opportunity to reflect on how much we have achieved in this time.

It is an appropriate time to take stock, because 2006 also marked a second phase in the College's development and progress since I became Principal. The early years of my tenure saw Queen Mary consolidate its position and profile in many fields. There were striking improvements in our attractiveness in the home and international student marketplace. We turned our financial position around to one of stability and strength. We made huge strides in raising our international and national profile, as judged by peer assessment exercises, the verdict of the market on the employability of our students and other external indicators. And, finally, we invested over £200 million in dramatically enhancing our estate and facilities, creating an outstandingly attractive campus for students and staff.

In 2006 we developed a new strategic plan for Queen Mary, outlining where and what sort of institution we want to be by 2010, and how we are going to get there. This strategy is based around five key elements: **Teaching and learning; Research; Our International Role; Our Responsibility to London and the Thames Gateway; and Our Resources.** This *Annual Review* celebrates Queen Mary's achievements and successes of the past year, and it also reflects each of these five themes which articulate our vision for the future.

Statement from the Principal



Teaching and Learning

We continued to build on Queen Mary's success in creating an outstandingly stimulating and innovative teaching and learning environment. Under the direction of Vice-Principal Professor Morag Shiach, 2006 saw the launch of a new Teaching and Learning strategy, and the College's first ever Teaching and Learning Conference. We saw an improvement in our performance in the National Student Survey and we have incorporated elements of student feedback regarding assessment and other issues into our new strategy. Developments in offering skills relevant to employability to students have also been incorporated into the curriculum, and we hope to expand this across all departments.

Research

Our new strategic plan aims to make Queen Mary the acknowledged leader in our chosen areas of research. Last year we took steps to achieve this ambition, recruiting more research-active staff, generating research income of £43 million (and rising), and boosting our levels of postgraduate research students. We also built on existing knowledge transfer activities, transferring research outcomes and expertise to business and the wider community. In July 2006, Queen Mary announced a significant partnership with IP Group plc, an established operator in the commercialisation of intellectual property. IP Group pledged an initial investment of £5 million in Queen Mary spin-out companies, and is also working on licensing opportunities across the College. This injection of revenue and expertise will accelerate the commercialisation of Queen Mary research projects.

Our International Role

Queen Mary's international community has been a strong element of life at the College. An increasing number of international partnerships in research and teaching have been established and nurtured over recent years, including our major joint degree programmes in Beijing. In 2006, a new development which puts Queen Mary's global credentials firmly on the map, was given government funding and endorsement. Queen Mary secured just under £5 million as the lead institution for a new collaborative programme involving several universities in the UK and China. Innovation China UK (ICUK) will be the first collaborative research and knowledge transfer partnership supporting UK and Chinese higher education institutions. It will act as a springboard for UK businesses to access resources in China and allow Chinese universities access to UK expertise in management and the exploitation of all aspects of knowledge transfer. Academics based in the UK will have access to leading scientists, expertise and facilities, easing entry into the potential markets of China. ICUK represents a great opportunity for the UK economy to benefit from emerging economies, like China.

Our Responsibility to London and the Thames Gateway

Queen Mary's commitment to our immediate local community, to London and to the wider Thames Gateway region is intrinsic to everything we do, encompassing outreach work with schools and colleges, our £500 million annual contribution to the economy and work with business and industry. I am delighted to report that in 2006, we received planning permission from the London Borough of Tower Hamlets to build an important new Biosciences Innovation Centre at our Whitechapel Campus. A collaboration between Queen Mary and the London Development Agency (LDA), and with funding from the Department of Communities and Local Government, the new Innovation Centre will provide the high quality facilities needed by entrepreneurial scientists to commercialise their research, allowing them to remain and grow in east London, as well as attracting new companies to this part of the capital. The Innovation Centre will attract start-up businesses from Queen Mary as well as independent companies. It expects to contribute to the employment of up to 300 skilled professionals, and anticipates supporting additional jobs in services in the local community. This project is due for completion in late 2008.

Resources

Nurturing and rewarding staff and looking after physical resources and infrastructure are an important component of managing an institution like Queen Mary, which has almost 3,000 staff based across four campuses. One of the key achievements of 2006 was the implementation of the National Pay Framework. I am happy to report that the first stages of this initiative were concluded last year, with the majority of colleagues benefiting from pay rises and enhanced terms and conditions. Recruiting, retaining and rewarding our staff is vital to create the environment where the very best researchers, teachers, and support staff can flourish.

I hope you will enjoy reading this *Annual Review* and will get a flavour of some of the key projects we are currently taking forward. *The Times Good University Guide 2006* described Queen Mary as "setting the agenda academically for over one hundred years". Long may it continue.

Professor Adrian Smith FRS Principal

News in Brief 2006

MI5 warns of terror threat

Dame Eliza Manningham-Buller, the Director General of MI5, Britain's Security Service, gave a rare speech at Queen Mary in November 2006 in which she warned of the continuing threat of terrorism and described how the Security Service and others were combating it. Addressing an invited audience of academics, students and journalists as a guest of the Mile End Group and Professor Peter Hennessy, Attlee Professor of Contemporary British History, Dame Eliza spoke of the current threat, the factors that lie behind the increase in terrorism and the work that is being done to counter it.



Queen Mary joins 1994 group

Queen Mary joined the 1994 Group in August 2006. The 1994 Group represents nineteen internationally renowned universities, all engaged in leading-edge research and high-quality teaching. It is committed to meeting the diverse needs of students, staff and policy makers. The 1994 Group provides a framework for collaboration between research-intensive universities in the UK. It aims to enhance the ability of member universities to act collectively where appropriate whilst maintaining their individuality and thriving in the highly competitive higher education sector. Other members of the 1994 Group include Warwick, Essex and Leicester Universities and several Colleges within the University of London.

Double award success

Queen Mary celebrated a double success at this year's *Times Higher Awards* in November 2006. Professor Lisa Jardine CBE won the Lifetime Achievement Award, recognising her commitment and services to education and in particular her strength as communicator, making complex ideas accessible. Dr Dan Todman scooped the award for Young Academic Author of the Year.

Mayor backs children's Biosciences centre

Mayor of London Ken Livingstone made a special visit in October 2006 to the Centre of the Cell, the planned bioscience education centre inside Queen Mary's Blizard Building and described it as: "A groundbreaking project which will open up the world of science to thousands of young Londoners." He paid tribute to the project's aspirations to encourage more young people to take up science in school and university. He added that they would help to build the highly skilled workforce needed to strengthen London's economy and regenerate deprived areas. The visit was followed by confirmation of a substantial donation by the London Development Agency (LDA) to this project, building on the LDA's initial investment in the Centre of the Cell.

Guardian Editor lecture

Editor of the *Guardian*, Alan Rusbridger, made his inaugural lecture in February 2006 as Queen Mary's first Hugo Young Visiting Professor of Modern History. Speaking about his passion for newspapers, he nevertheless emphasised the threat posed by the Internet. Alan Rusbridger suggested that the equivalent threat to newspapers could come from free Internet classified advertising board, Craigslist, which now has 10 million users and is established in 190 cities worldwide. He said: "For two or three hundred years newspapers made money from a combination of cover price and advertising...

...all that's changing... Craigslist has found its own publishing business model which threatens to wipe out newspapers around the world."



Suez: 50 years on

Queen Mary's History Department hosted a one day colloquium in June 2006 to mark the fiftieth anniversary of the Suez Crisis. The Crisis revealed the fragility of Britain's claim to be seen as amongst the first rank of world powers after the Second World War, and demonstrated the limits of its ability to act independently and without prejudice in matters of foreign policy. It was a diplomatic, military, economic and moral crisis that delivered a psychological shock not just to the Prime Minister, Anthony Eden, and his Government, but to the nation at large. Speakers at the event included Professor Peter Hennessy and BBC diplomatic editor Brian Hanrahan.



Image courtesy: www.navyphotos.co.uk

One hundred years of French

The French Department celebrated the centenary anniversary of the teaching of the subject at Queen Mary this year. A one day conference in June 2006, London-Paris dialogues, focused on Anglo-French relations through politics, literature, art, film and culture. A new Centre for Catalan Studies opened in March 2006, building on existing expertise in this field. Queen Mary is one of the only two UK universities with a post dedicated exclusively to this subject. The School of Modern Languages also hosted a conference on the implementation of the Common European Framework of Reference for Languages (CEFR) in UK Higher Education Institutions, held in November 2006.



Applications up

Student applications to Queen Mary again bucked the national trend in 2006, with a 6.5 per cent rise on 2005's figures. Applications across the higher education sector dropped by 3.2 per cent overall. Queen Mary's succession of increased applications in recent years is testament to the College's rising profile nationally and internationally, as well as a commitment to investing resources in campus development. Spending over £200 million in the past ten years, Queen Mary has created the largest student village in London, with an impressive range of award-winning buildings and first class facilities for students.

Preventing bird flu

Queen Mary's spin-out company Retroscreen Virology hosted a major conference on the role of vaccines in halting the spread of bird flu in June 2006. Focusing on practical intervention using vaccines or passive antibodies, new molecular technologies, and the speed with which vaccines can be made, the event attracted delegates from all over the world and the world's media. Professor of Virology in Queen Mary's School of Medicine and Dentistry and leading bird flu expert, John Oxford commented: "Every other day someone in SE Asia dies from bird flu. The threat of a global bird flu pandemic has increased – children under four are especially vulnerable to the disease. Vaccines are a crucial component in the line of defence against the spread of the virus".

HRH Princess Anne unveils state-of-the-art skills centre for healthcare students in London

HRH The Princess Royal – Chancellor of the University of London – launched a multi-million pound, state-of-the-art learning facility for healthcare students from Queen Mary, University of London and The City University, London on the 8 November 2006.

The two institutions, who share a history of collaboration in healthcare education, were jointly awarded Centre for Excellence in Teaching and Learning (CETL) status, and £3.15 million in funding, by the Higher Education Funding Council for England (HEFCE) in 2005 in recognition of their work in skills training for 3,000 students across six healthcare professions.

The original Clinical Skills Centre – based in the Robin Brook Centre at St Bartholomew's Hospital – has been enlarged to accommodate a total of 11 multipurpose skills laboratories plus a four room communication skills suite. The Centre is equipped with state-of-the-art models, simulators and video equipment to help students develop the skills they need.

Additionally, Queen Mary and City have pioneered the use of a Clinical and Communication Skills Bus. The mobile mini skills lab caters for students whose clinical placements in hospitals, surgeries and care homes mean they are geographically distant from the Centre. It provides an environment in which between ten and 20 students can practice a range of core skills and is the first of its kind in the UK. Its driver is a former paramedic who is able to provide support for both teaching staff and students.

Maggie Nicol, Director of CETL said; "CETL has brought together a group of highly motivated and committed academics from six healthcare professions. The new facilities and equipment, extended opening times, and the Skills Bus will enable us to really enhance student learning and help them develop excellent clinical and communication skills in preparation for their future role in a transforming healthcare system."



Octagon restored

Queen Mary re-opened the Octagon in June 2006, a stunning Victorian centrepiece at the heart of the Mile End Campus, following extensive refurbishment. Modelled on the Reading Room of the British Museum, the Octagon began life as the library of the People's Palace, a venue that would bring education and entertainment to the impoverished people of east London. Today it serves the Queen Mary community and wider as an atmospheric and elegant conference and dining space.



Laura Blomeley memorial

Queen Mary paid tribute to an exceptional student, and former Students' Union President, Laura Blomeley, who died, aged 23, in February 2006, following a seven-month fight against an aggressive brain tumour.

A memorial service, held in the Octagon, featured moving anecdotes from fellow students and senior members of Queen Mary staff. An English and French undergraduate, Laura spent two years as a Union sabbatical, and won the University of London's Unions' President's Award for her 'extraordinary work'.

A permanent memorial to Laura will be the 'Blomeley Centre', housing the offices and support services of the Queen Mary Students' Union at the heart of the Student Village.



Jon Snow, Melvyn Bragg, Jung Chang and Marcus du Sautoy

Broadcasters Jon Snow and Melvyn Bragg, writer Jung Chang and mathematician Marcus du Sautoy were some of the many high-profile speakers at Queen Mary in 2006. Jon Snow delivered the annual Bagehot Lecture, discussing the reporter as witness; the 2006 Bronowski Lecture was delivered by Melvyn Bragg on the topic of 'the need to know' and communicating knowledge; and author Jung Chang was in conversation with Professor Lisa Jardine at the annual HarperCollins Biography Lecture. They discussed Jung Chang and Jon Halliday's biography of Chairman Mao, which the authors spent ten years researching. Marcus du Sautoy delivered the College's inaugural Draper's Lecture on Teaching and Learning, telling the audience how the big stories of prime numbers can excite people about mathematics.

The future of computing

Top physicists and computer scientists gathered at Queen Mary in summer 2006. One hundred scientists from 20 institutions across the UK discussed the next steps of the GridPP project, the UK effort to prepare for the massive data volumes expected from the forthcoming generation of particle physics experiments. In 2007, Conseil Européen pour la Recherche Nucléaire (CERN) will introduce its Large Hadron Collider (LHC) - the world's largest particle accelerator. The LHC will allow scientists to penetrate further into the structure of matter and recreate the conditions prevailing in the early universe, just after the Big Bang. Experiments at the

LHC will produce more data than any previous coordinated human endeavour – more than 15 Petabytes each year, equivalent to a stack of CDs twice the height of Mount Everest.

To manage this, researchers are creating a Grid to distribute the processing and storage of data around the world. The LHC Computing Grid (LCG) already includes more 20,000 computers spread across nearly 40 countries, and as such is the world's largest Grid. The UK is the biggest single contributor to the LCG, with more than a fifth of the Grid's processing power at its 19 sites. Queen Mary is one of the sites in GridPP and is a part of the group of London sites called London Tier 2.

Protecting pilgrims

The Muslim Council of Britain, the Health Protection Agency and Queen Mary hosted a special 'Health at Hajj' conference in November 2006, urging UK pilgrims travelling to Mecca to make sure they received the appropriate vaccinations before making the journey. More than two million Muslims perform the Hajj every year, with up to 25,000 pilgrims from the UK. The influx of a large population from around the world within a confined area over a short period increases the risk of respiratory and gastrointestinal infections, in particular meningococcal disease and influenza.



Teaching and Learning





“Create an outstandingly stimulating and innovative teaching and learning environment”



From the outsider's perspective, students are the 'raison d'être' of a university. And although higher education institutions are complex organisations, the dual components of excellent teaching and learning and inspiring and motivating students are essential to Queen Mary's continued success. In the last year, the College has built on earlier changes to improve the experience for undergraduates and postgraduates. Crucially, 2006 saw the first cohort of students entering higher education under the new system of tuition fees. In spite of the changes to the student finance system, Queen Mary has continued to see a rise in its student application figures – in the face of a national decline. Numbers of taught postgraduate students have also increased. This is due, in part, to the £200 million investment made by the College in campus development over the past ten years, creating the largest student village in the capital, an impressive range of award-winning buildings, and first class facilities for students. The final phase of the Westfield Student Village was completed in 2006, which means that more than 2,000 students are now housed on the Mile End Campus.

Of course, it is not just having the right facilities that create the best learning experience for students. What goes hand in hand with learning is 'teaching' and Queen Mary is committed to recruiting, developing and retaining the very best teachers for our students. Building on the appointment in 2005 of Professor Morag Shiach as the College's first Vice-Principal for Teaching and Learning, 2006 saw the implementation of several initiatives to consolidate and build on good practice in this field.

The College's new Teaching and Learning Strategy was launched in 2006. It aims to develop existing achievements and takes into account both changes occurring nationally and developments in students' learning styles. Nationally, the introduction of the UK Professional Standards Framework for Teaching and

Supporting Learning in Higher Education means that all new Queen Mary academic staff will now be trained to nationally agreed standards in academic practice. E-learning and distance learning adds another dimension to the ways in which programmes are provided. Blended learning – which draws on face-to-face teaching as well as innovative electronic resources – is becoming a key tool, not only in the delivery of courses but also in supporting students to manage their learning off-campus.

Picking up on one of the key strands of the new strategy, 2006 also saw the opening of a new e-learning drop-in centre for teaching staff. The learning technology is a vibrant aspect of this work and this recently established e-learning unit provides support to all teachers who are developing distance and e-learning materials. Support offered includes:

- the provision of resources
- the use of multimedia and online video in teaching
- online assessments and feedback
- online discussion for both campus-based and offshore students
- image databases
- use of electronic plagiarism detection software
- staff-student and student-student online conferencing
- course information management
- the recording and replay of lectures
- online tutorials and courses run entirely over a distance.

The drop-in centre provides a space for staff to 'drop in' and work on their e-learning activities in a calm atmosphere with well-specified equipment, and e-learning professionals are on hand to provide support. Last year new dedicated and enhanced facilities were also created for Educational and Staff Development within the Francis Bancroft Building, creating a one-stop shop for staff needing to access training, teaching and learning resources.

National Teaching Fellows

Elizabeth Davenport, Professor of Dental Education and Evelyn Welch, Professor of Renaissance Studies, have become National Teaching Fellows.

Professor Evelyn Welch was presented with the award, in part, for her innovative course, 'Ways of Looking' which sees 72 English students divided into groups; they receive few formal lectures, and the whole group receives the same mark for their portfolio submission, thus emphasising the importance of collaboration. "Many humanities students are surprisingly passive learners," explains Professor Welch. "We've tried to engage students by getting them to work in pairs or groups during lectures but this course takes this a step further. It says to students that learning to work with other people really matters; especially people who are different from you, because that's what life is really like!"

The programme was underpinned by an e-learning component which enabled groups to share information, capturing a greater percentage of student time outside the classroom. Professor Welch is particularly grateful for a Queen Mary e-Learning fellowship which allowed her to work with a Learning Technologist to develop a Web-CT site for the course.

Professor Welch also received the Wolfson Prize for her book *Shopping in the Renaissance: Consumer Cultures in Italy, 1400-1600* earlier this year and adds, "It's particularly nice to receive an academic accolade as well as teaching accolade in the same year. While we often talk about the links between teaching and research, there is a tendency to see one as getting in the way of the other. I believe that this really does show that the two sides go hand in hand."

Professor Elizabeth Davenport received the Fellowship for her role in developing the Dental curriculum at the School of Medicine and Dentistry. Professor Davenport was rewarded for her work at a national level in developing a 'Dental Progress File', her development and subsequent introduction of the 'Objective Structured Clinical Examinations' (OSCEs) and for her 'Teddy Bear's Hospital' initiative.

Professor Davenport developed the 'Dental Progress File,' an electronic progress file which leads seamlessly from undergraduate level to postgraduate education. "The development of a Progress File for the Dental Continuum was initiated because of my wish to engage students and trainees more fully in regular reflective practice. Reflective practice should produce caring, knowledgeable, competent and confident dentists who realise that learning does not stop at qualification," explained Professor Davenport.



"The survey is a vital sounding board for higher education institutions like Queen Mary. Through feedback from students, we are able to monitor the quality of our teaching and other important aspects of students' academic experience. We are constantly looking for ways to innovate and enhance the already high quality of teaching and learning that students experience whilst studying at Queen Mary."

*Vice Principal for Teaching and Learning,
Professor Morag Shiach, on the National
Student Survey 2006 results*

An important context for the development of the new Teaching and Learning strategy was the results from the 2006 National Student Survey, which also aim to inform prospective students and their advisers in choosing what and where to study. It showed that final year students at Queen Mary are broadly satisfied with the quality of their degrees, and their institution. Ten departments at Queen Mary were ranked within the top 20 nationally for overall satisfaction, three of those within the top ten.

The Departments of History and Politics, the School of English and Drama, and the School of Law saw high levels of student satisfaction – comfortably above the national average – for the overall quality of their courses. The quality of teaching in English and Drama, History, Law, Modern Languages and Politics was particularly high, far exceeding the national average. The Departments of Electronic Engineering and Physics saw significant improvements in levels of student satisfaction for course quality with Electronic Engineering ranked joint fifth in the country. Biomedical Sciences (Medicine – allied subjects) – was ranked, overall, joint second and Materials was ranked sixth.

“The College has been setting the agenda academically for more than 100 years. Head (teachers) and academics rate it highly... the modern Queen Mary is a true all-round institution with excellence in medicine and dentistry, science and engineering, and the social sciences and arts”

The Sunday Times Good University Guide 2006



cs4fn

Queen Mary's first Learning and Teaching conference culminated with the presentation of the Drapers' Prizes for the Development of Learning and Teaching. Dr Paul Curzon and Professor Peter McOwan of Computer Science received an award for their innovations in teaching and learning.

Dr Curzon and Professor McOwan received the award for their publication *cs4fn* a widening participation project that aims to raise young people's awareness of Computer Science and create enthusiasm for science in general.

Dr Curzon said: “The project aims to widen participation by raising awareness of Computer Science as studied at university. It also prepares students for formal learning and gives existing students a broader understanding of the subject.”

The magazine uses a light and irreverent style of writing. *cs4fn* is available both as an on-line webzine and as a hard copy magazine with links through to www.dcs.qmul.ac.uk/cs4fn/

“We involve visitors to the site directly in leading edge research and therefore making such it more real,” explains Professor McOwan. It uses interactive play to teach deep concepts thus making international computer science research accessible to school and university students alike.

Throughout 2006 the website has averaged over 8,000 visitors per month. *cs4fn* is supported financially by major industry players (Microsoft, Intel and ARM) and has been praised by academics, teachers, students and parents alike. It has also contributed to a substantial rise in undergraduate applications for Computer Science at Queen Mary, an incredible 70 per cent for 2006 entry.



Students working in the Augmented Human Interaction Laboratory, using motion capture technology, as used in the film industry

Queen Mary's first Teaching and Learning conference took place in the autumn of 2006. It focused on assessment and feedback, one of the most important issues raised by the National Student Survey, and included a key-note address from Alison Bone, Principal Lecturer at the University of Brighton, whose current research examines the use of formative assessment and its impact on learning. Other themes explored included e-learning, curriculum design, student support, key skills and professional development planning.

Measuring performance in teaching can be problematic. In 2006 Professor Morag Shiach received a Leadership Foundation Fellowship to help her carry out research in this area. She is keen to develop new systems to measure teaching performance. Through this project the College will gain a broader understanding of the possible impact of different approaches to the measurement of teaching performance and will be able to focus on the most robust and productive measures in its own work.

In summer 2006, Professors Evelyn Welch (School of English and Drama) and Elizabeth Davenport (Institute of Dentistry) received the indisputable accolade of being made National Teaching Fellows. This award from the Higher Education Academy recognised their commitment to the development of their disciplines nationally and internationally, as well as their roles as excellent and innovative teaching practitioners (see detailed report on page 17).

Physics at Queen Mary

"The Department of Physics at Queen Mary, University of London has never thought small. It was here, back in 1984, that Michael Green – in collaboration with the US academic John Schwarz – did his pioneering work on string theory, and the department has retained its international research reputation ever since. At almost any time of day you can drop into the labs on the Mile End Road in east London and end up chatting to one of the world's top physicists.

"You might find a similarly stellar cast list of academics at other leading universities, but you'd be hard pushed to find the same informality. And it's this combination that has helped secure Queen Mary the top ranking in this year's physics table."
– The *Guardian University Guide*, 2006



In November 2006, the Princess Royal, Chancellor of the University of London, unveiled a state-of-the-art skills centre for healthcare students from Queen Mary's School of Medicine and Dentistry and The School of Nursing and Midwifery at strategic partner City University. The two institutions, who share a history of collaboration in healthcare education, were jointly awarded Centre for Excellence in Teaching and Learning (CETL) status, and £3.15 million in funding, by the Higher Education Funding Council for England (HEFCE) in recognition of their work in skills training for 3,000 students across six healthcare professions.

The original Clinical Skills Centre was enlarged to accommodate a total of eleven multipurpose skills laboratories plus a four room communication skills suite. The Centre is equipped with state-of-the-art models, simulators and video equipment to help students develop the skills they need. Additionally, Queen Mary and The City pioneered the use of a Clinical and Communication Skills Bus – the first of its kind in the UK. A mobile mini skills lab caters for students whose clinical placements in hospitals, surgeries and care homes mean they are geographically distant from the Centre. It provides an environment in which between ten and twelve students can practice a range of core skills. Its driver is a former paramedic who is able to provide support for both teaching staff and students.

“This programme is leading the sector in delivery to undergraduates and taught postgraduates.”

Evaluation Report from the University of Leeds on Queen Mary's activity to promote key skills and employability to students



Research





“Make Queen Mary the acknowledged leader in our chosen areas of research”



By 2010, Queen Mary aims to be an acknowledged world leader in its chosen areas of research. Some of the key stepping stones needed to achieve this ambition were set in place in 2006. With research income totalling £43 million and rising each year; continued increases in international and national collaborations; successful drives to both appoint both high-quality staff and recruit more postgraduate research students, plus impressive new facilities such as the Lock-keeper's Cottage Graduate Centre which houses the Humanities and Social Sciences Postgraduate Research Centre, Queen Mary is well on target to meet its ambitious research goals.

Preparations for the 2008 Research Assessment Exercise (RAE) continued with the College producing high-quality outputs and receiving positive feedback from assessors. A particular theme for 2006 was the notable increase in the number of interdisciplinary research projects. The Science and Engineering sector launched four new interdisciplinary research consortia to foster novel interactions and build critical mass around emerging research areas, such as nanotechnology, bioengineering and clean energy research. The launch of the consortium for Computer Science, Electronic Engineering and Mathematics featured a guest lecture by Andrew Herbert, the Managing Director for Microsoft Research UK.

Strength in research helps to create a vibrant teaching and learning environment, with students benefiting from the latest thinking in their fields of study. This is true for undergraduates, but also notably the postgraduate student body. The Graduate Schools for each of the College's sectors (Humanities and Social Sciences; Science and Engineering; and Medicine and Dentistry): are now a fixed part of the postgraduate community at Queen Mary. Following improved marketing and separate Open Days, they have consolidated their position in the market and recruitment is buoyant. In 2006 the number of home/EU full-time

postgraduate students on taught courses at Queen Mary rose by 25 per cent. There were also increases for overseas and part-time students.

Building on its existing knowledge transfer activities, Queen Mary announced a significant partnership with IP Group plc in July 2006. An established operator in the commercialisation of intellectual property arena, IP Group has a successful track record in creating new companies from research developments, and also in realising value from them. IP Group pledged an initial investment of £5 million in Queen Mary spin-out companies, and is also working on licensing opportunities across the College. This injection of revenue and expertise from the IP Group will accelerate commercialisation of Queen Mary research projects. Its first venture was a £1million investment in spin-out company Retroscreen, founded by virology expert, Professor John Oxford. Retroscreen's work is dedicated to creating the next generation of antivirals and vaccines specifically for the treatment of avian influenza (bird flu), HIV, SARS and rhino-virus.

Queen Mary also performed well in the fifth annual Higher Education-Business and Community Interaction Survey, published in 2006. Referring to data from 2003-04, the College, for certain criteria, ranked in the top ten of UK universities with business links. Particular strengths were contract research income (£8.05million – nearly three times the national average), income generation from consultancy contracts (£8.74million) and number of active patents (229). The survey also highlighted the contribution made by higher education institutions such as Queen Mary to the social fabric of communities locally, nationally and internationally. Through a range of activities including free public lectures, performances and exhibitions, over 22,000 people visited the College to attend such events during this period.



Humanities and Social Sciences

Hooke manuscript returned home

A long-lost manuscript belonging to pioneering scientist Robert Hooke was returned to the Royal Society in July 2006. Director of the Centre for Editing Lives and Letters and biographer of Robert Hooke, Professor Lisa Jardine was the first person to alert the Royal Society to the existence of the document. The hand-written notes are thought to contain a “treasure trove” of information about the early endeavours of the UK’s academy of science. A digitised version of the notes will eventually be available on the web. The document, which had lain hidden in a house in Hampshire, was rescued from a public auction after a fundraising effort pulled in the £940,000 needed. The fragile pages of the manuscript contain Hooke’s notes of Royal Society meetings that took place in the seventeenth century. Professor Jardine said:

“These are the records of what happened at the Royal Society between late 1677 and late 1682. There could well be a Newton experiment in there that nobody knows about. Hooke was a colourful, controversial character. These minutes are more likely to tell us about his interactions with other people. For a biographer like me, they will give us a much fuller picture.”



Image courtesy: The Royal Society

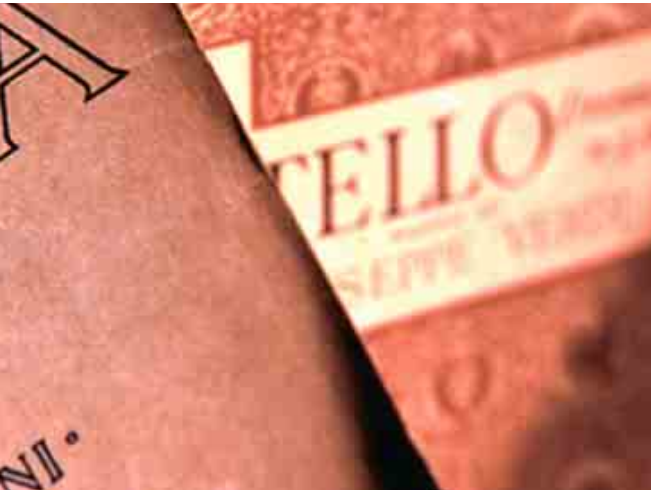


Researching performing arts

Dr Peggy Reynolds and Dr Jen Harvie both received Arts and Humanities Research Council (AHRC) Collaborative Doctoral Awards in 2006 for collaborations between the School of English and Drama and high profile national performance organisations.

Dr Reynolds is working with the opera company at Glyndebourne. Her studentship project ‘A History of Opera in Process: Research from the Glyndebourne Archives’ will examine and record primary materials held in the Glyndebourne Archive to establish the history of the production of key operas. Research will feed into new productions in process at Glyndebourne. While most of the project will be archival based, students will also be able to access ongoing new works of leading directors, designers and conductors.

Dr Harvie will be working with ‘Artangel’, one of the foremost art commissioning companies in Britain to create an online archive of Artangel material. The project ‘Digitally Archiving Artangel: Creative Translation Between Event and Internet’ aims to archive art that does not leave a lasting concrete record. Dr Harvie explained, “Many of the projects commissioned by Artangel are temporary and we are looking to represent the art in an intelligent and creative way; not simply cataloguing the art but creating an Internet audience experience similar to, or evocative of, the live experience.”



Researching Fair Trade

Professor Janet Dine, Director of the Centre for Commercial Law Studies and Professor Bridget Granville from Queen Mary's School of Business and Management were awarded an Arts and Humanities Research Council grant of more than £300,000 to research the economy and structure of the Fair Trade movement and brand. Research is needed to establish the way in which the Fair Trade movement operates, the interrelationship of different networks and their accountability to prevent possible 'capture' of the movement by large retailers and manufacturers. Professor Dine noted: "As the market for Fair Trade products expands, it is increasingly likely that large multinationals will seek to co-opt the trade and undermine the original objectives of the movement. If we do not have clearly established rules and legal foundations, these objectives may very easily be undermined and a fraud practised on the public."

City lives and connections

Queen Mary's Geography Department launched a new research centre, 'The City Centre: Researching city lives and connections' in December 2006. The City Centre is a new home for city-focused collaborative research and related activities. Particular interests include new forms of urban politics; socio-economic exclusion and livelihoods; economic geographies of the city; women, planning and urban design; art, performance and representation; and environmental concerns in the city. Research and activity is being developed through long-term collaborations with local partners in London, and international partners in Africa, Central and Eastern Europe, Latin America and North America.

"The pressing problems facing communities around the world demand that academics and students develop collaborative research relationships focused on problem-solving and action. The City Centre is all about putting academic expertise to good use beyond the academy," said Director of the City Centre Professor Jane Wills.

The East End's new Cockney twang

Research undertaken in east London by Sue Fox of Queen Mary's Linguistics Department found that young people born within earshot of Bow Bells are more likely to speak with a blend of Jamaican, Bengali, Turkish or even Brazilian than they are with the twang of the traditional East End. Due in part to immigration to an area synonymous with new arrivals to Britain, this phenomenon, known as Jafaican, is also caused by the post-war exodus from east London to Essex of the traditional white working-class.

The result is the growing influence of words like "nang", "nuff" and "diss" which are forming an accepted code among the new generation of real-life East Enders. It is also causing the virtual disappearance among London teenagers of speech patterns dating back to the Victorian period and before.

"We have young people from many different ethnic backgrounds and have found that it is this blend that is responsible for the change. It is a move away from the traditional cockney speech form which was previously used by working-class Londoners," commented Sue Fox.

She gathered evidence of the new accent during interviews and observation of 16- to 19-year-olds, many of them second or third-generation immigrants, at a further education college in east London. The findings have important ramifications not just for the capital's accent but for the supposed "levelling" of traditional accents around Britain.

\



Science and Engineering

Seeing day and night on extrasolar planet

NASA's Spitzer Space Telescope made the first-ever measurements of the day and night temperatures of a planet outside our solar system in 2006.

An international team of scientists, including Dr James Cho from Queen Mary's Astronomy Unit, used data from Spitzer to reveal that the planet, a Jupiter-like ball of gas circling very close to its sun, is always as hot as fire on one side and potentially as cold as ice on the other.

"This planet has temperature that is extremely different on the day side, compared to the night side," explained Dr Cho. "Such a large difference between the day and night sides reveals very interesting things about how heat and air masses flow on the planet. It makes for a very unusual climate and weather on this planet."

The finding represents the first time that any kind of variation has been seen across the surface of a planet beyond our solar system. Previous measurements of extrasolar planets describe global traits, for example size and mass, but not temperature. Dr Cho added: "This could be the first step to eventually finding habitable planets in other star systems."

Improving wind energy efficiency

A major Wind Energy Technologies Consortium involving universities and industrial partners, including Queen Mary's Materials was launched in October 2006.

The objective of the £2.5 million funded consortium is to research the cost-effectiveness, reliability and availability of existing and future large-scale wind turbine systems in the UK. The technical role of the Materials team, led by Professor Paul Hogg, is to identify and evaluate novel materials for wind turbine blades and towers.



Decoded sea urchin genome shows links to man

Professor Maurice Elphick, from Queen Mary's School of Biological and Chemical Sciences, was part of an international team who decoded and analysed the genome sequence of the sea urchin, *Strongylocentrotus purpuratus*, and found remarkable similarities with humans. The primary results were presented in a November 2006 issue of *Science* and in a special issue of *Developmental Biology*.

Sea urchins are echinoderms, marine animals that originated over 540 million years ago and include starfish, brittle stars, sea lilies, and sea cucumbers. There was great interest in the sea urchin genome, because echinoderms share a common ancestor with humans. To discover how sea urchins and humans can be so different, yet be related by descent from an ancient relative, their genomes were compared.

The results showed that the sea urchin genome is closer to humans than to other species such as worms and fruit flies. Professor Elphick explained:

"The comparison of the genes of the sea urchin to the human gene list shows which human genes are likely to be recent innovations in human evolution, and which are ancient. It also shows which human genes have changed slowly in the lineage from the ancestral animal and which genes are evolving rapidly in response to natural selection."

One of the surprise discoveries was that sea urchins have a much more complex innate immune system than humans, which may explain why sea urchin species can have incredibly long life spans, with some individuals living for up to 200 years. Future research on this aspect of sea urchin biology may lead to breakthroughs in the fight against infectious diseases in humans.

Finding the formula for a hit single

Queen Mary's Electronic Engineering Department received a £2.2 million grant from the Engineering and Physical Sciences Research Council (EPSRC) in October 2006 to lead the development of the second stage of OMRAS, its online music recognition and searching project. Headed by lead researcher Professor Mark Sandler, Director of Queen Mary's Centre for Digital Music, OMRAS2 may provide the answers eluding many musicians and fans: Where are the good songs in that two million song on-line music store? Are undiscovered works by Handel, Vivaldi or Purcell hidden among the items in a digitised score collection? Is there a mathematical formula for hit singles?

"We want to revolutionise how musicology – the study of music – is done," explained Professor Sandler. "That means making it easy to 'look under the hood' of the music, perhaps by understanding how the soprano performs her vibrato, how the bass player combines rhythm and harmony, and so on."

Research will focus on computational and mathematical methods to enable rapid searching and browsing of very large collections of scores and recorded music. But one of the motivations for OMRAS2 is not only to do scientific research on music, but to enable musicologists and others to use the tools and knowledge that the scientists provide. OMRAS2 will also look at how music and information about music (like CD insert booklets) will be enjoyed at home – not just downloading, but searching, recommending, and browsing.



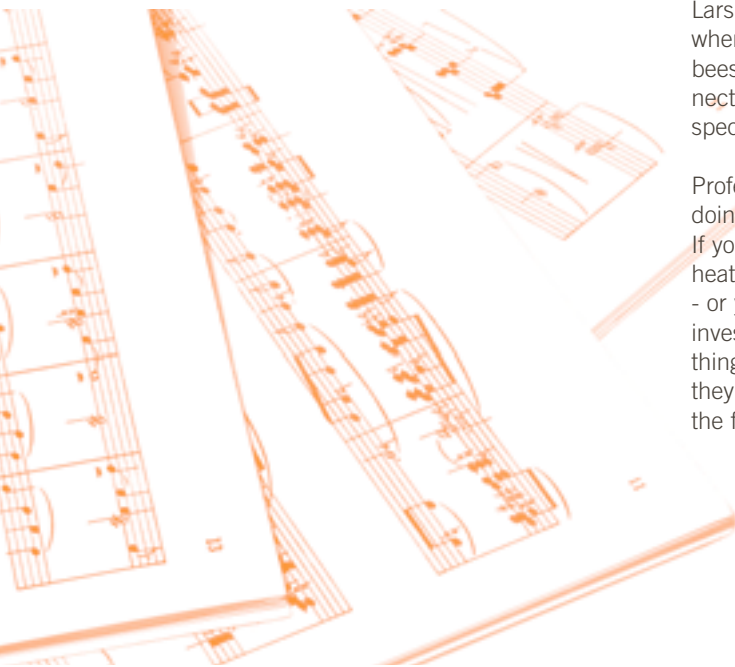
Bees like it hot

Research from Queen Mary's School of Biological and Chemical Sciences showed that bees prefer to visit warm flowers, and can learn to use colour to predict floral temperature before landing.

In the hunt for their next meal, it's long been thought that bees head for the flowers that contain the most nectar or pollen. But as bees need to invest energy in maintaining their body temperature, a flower's temperature might be seen as another reward.

Writing in the journal *Nature* in August 2006, Professor Lars Chittka and collaborators showed that in a world where flowers of different species differ in temperature, bees might cleverly pick the ones that offer warmer nectar - and they can learn to identify such warm flower species by understanding these species' flower colours.

Professor Chittka said: "What the bees appear to be doing is a bit like us drinking a hot drink on a cold day. If you need to warm up, you can produce your own heat, at the expense of some of your energy reserves - or you can consume a warm drink, and save on investing your own energy," he said. "The interesting thing is that bees don't just prefer the warmer drinks - they also learn to predict the flower temperature from the flower colour."



Medicine and Dentistry

Diabetes study in Bangladeshi population of east London

A research team from Queen Mary's Institute of Cell and Molecular Science won substantial funding for a study into diabetes prevention in people of Bangladeshi origin, living in east London. Led by Graham Hitman, Professor of Molecular Medicine and Diabetes, the research will examine the efficacy of prevention programmes amongst this ethnic minority group.

The risk of diabetes in south Asians is around one in three, three to six times more common than among white Europeans. Once diabetes has developed, it results in increased risk of heart attacks, strokes, loss of vision and kidney failure and accounts for approximately one tenth of NHS expenditure.

Professor Hitman commented: "This is a very important study for our local community, where one in four people over the age of 20 either have diabetes or so called pre-diabetes. We are looking for new ways, based on medical data held by GPs, to identify who is at highest risk and then exploring ways of motivating those people to adopt a healthier lifestyle, using members of the lay Bangladeshi community rather than health professionals."



William Harvey Day 2006

The School of Medicine and Dentistry's annual showcase of medical research, William Harvey Day, saw researchers from across all six Institutes deliver presentations on subjects ranging from HIV to Breast Cancer.

Aine McKnight, Professor of Viral Pathology at Queen Mary's Institute of Cell and Molecular Science, and part of an international consortium of research scientists taking part in the search for an HIV vaccine, discussed the 'treacherous' journey of the virus, once inside the cell, from the plasma membrane to the nucleus.

Louise Jones, Professor of Breast Pathology at Queen Mary's Institute of Cancer, discussed how the definition of distinct molecular subgroups of breast cancer offer not only improved prognostic information but potential therapeutic targets.

The William Harvey Research Institute (WHRI) celebrated its twentieth anniversary this year. Established by Nobel Laureate Sir John Vane, the Institute's research focuses on inflammation science, endocrinology and cardiology. It aims to generate new therapeutic targets and diagnostics for patients. Since its inception, the WHRI has built up a profile as one of the top pharmacological research centres in the world.

Scientists regrow damaged nerves using silk fibres

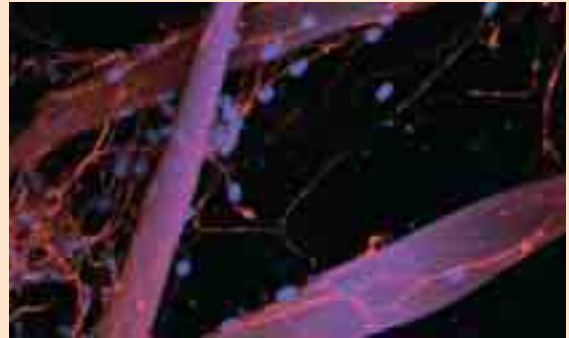
Scientists from Queen Mary and Oxford University have discovered how to use silk to encourage damaged nerves to regrow. Their research may lead to new treatments for damaged peripheral nerves and, further down the line, to treat spinal cord damage.

The research is illustrated by one of the winning images in this year's Wellcome Trust Biomedical Image Awards 2006.

Professor John Priestley from the Neuroscience Centre at Queen Mary's School of Medicine and Dentistry used bundles of silk fibres to encourage damaged nerve cells to re-grow in culture. The silk fibre, known as Spidrex®, is provided by Oxford Biomaterials Ltd. Spidrex® comes from silk worms but has been modified to develop special properties, increasing its strength and biocompatibility, and enabling nerve cells to bind more readily to the fibres.

The modified silk has properties similar to that of spider silks.

The Queen Mary and Oxford Biomaterials team have shown for the first time that nerve cells will bind to silk filaments. The award-winning image shows nerve cells growing along the fibre. Importantly, Schwann cells can also be seen along the fibres; these are the building blocks which support the growth of the nerve cells.



Health Protection Agency's TB unit moves in

A successful joint bid by Queen Mary's School of Medicine and Dentistry and partner Barts and The London NHS Trust saw the move of the Health Protection Agency's National Mycobacterium Reference Unit (HPA MRU) to the School's Whitechapel campus in October 2006. The unit plays an integral role in the UK's fight against TB and its location allows for new collaborations with both academic staff in Queen Mary's Centres for Infectious Diseases and Primary Care, as well as community health staff throughout east London. The move was marked by a conference examining TB related topics, ranging from global and public health perspectives to the latest molecular science and vaccine development.

Britain is one of the few European Union countries where the number of people contracting TB has risen in the past ten years. High-risk groups are found in inner city areas, with London accounting for over 40 per cent of all UK cases.

Professor Francis Drobniowski, Director of the HPA MRU and Head of the Clinical TB and HIV Group at Queen Mary's Institute of Cell and Molecular Science, said: "The world has come to our doorstep and the twin epidemics of TB and HIV are as important a problem for Europe to address as for those charged with healthcare in the developing world."

Discovering the genetic cause of inherited pancreatic cancer

Pancreatic cancer is the fifth most common cause of cancer mortality in the UK. Ten per cent of cases are thought to be caused by inherited genetic mutations. Yet the genes responsible for this largely fatal disease have remained elusive. Dr Tatjana Crnogorac-Jurcevic, Senior Lecturer in Cancer Genomics at Queen Mary's School of Medicine and Dentistry, and colleagues in the US, discovered that the gene palladin, when mutated, causes familial pancreatic cancer. The research, published in December 2006, may help explain how the disease develops and why it is so deadly.

During their research the team focused on a single family in which 18 members from four generations had either pancreatic cancer or precancerous lesions of the pancreas. The results of DNA tracing left little doubt that mutated palladin was involved in the development of pancreatic cancer this family. The identification of palladin as a "pancreatic cancer gene" provided researchers with a molecular entry point into the cellular processes underlying this cancer and will hopefully help to improve diagnosis and development of new treatments for this disease.

Our International role



u k u s h
h i n a
K a r a k
Highway
Gilgit



Shapur Bhalwal
Sargodha
Chiniot
Faisalabad
Gojra
Hafizabad
Gujranwala
Narowal
Shekhupura
Lahore
Sangla
Jaranwala
Raiwind
Kasur
Pattoki
Changa Manga



“Position Queen Mary globally to enhance our research and teaching through international partnerships”

The term ‘global village’ could well be used to describe the essence of east London and indeed Queen Mary itself: the College is a significant player on the world stage. Almost 25 per cent of our students come from beyond the European Union (EU). Increasing numbers of international research projects are developing across many academic sectors. Genuine partnerships are being formed with institutions and organisations in countries nearby, such as the University of London in Paris, to projects further a field in Brazil, China, the Dominican Republic, Iran and Pakistan.

The Times Higher Education Supplement's 2006 world university rankings listed Queen Mary as the 99th most influential higher education institution in the world. In the same survey, we are ranked fifteenth in the UK. The rankings concentrate on research, teaching and international outlook, and give a picture of current strengths and future growth, rather than focusing on accolades from past years.

In 2006, Queen Mary once again saw an increase in international student enrolments. The ten per cent rise is in direct contrast to current recruitment patterns in many other higher education institutions, and it underlines the continued attraction of the College for overseas students.



Brazil

People's Palace Projects (PPP), a spin-out arts production company and charity from the School of English and Drama, has developed a long-term relationship with artists in Brazil. PPP facilitates international theatre projects with strong community and social relevance. In 2006 PPP co-produced performances and workshops by one of Rio de Janeiro's top hip-hop bands AfroReggae, a household name in Brazil. More than a group of musicians, AfroReggae is a dynamic social movement whose roots lie in the poverty and violence found daily in Rio's 'favelas'. AfroReggae is a cultural group that was established in the favela (shantytown) of Vigário Geral in 1993. They work within the poorest and most violent communities in Rio de Janeiro and have one clear aim: to take young people out of the drug trade through arts-based activities. They began as a community centre offering workshops in recycling, percussion and dance. With the emphasis on optimism, self-motivation and releasing the potential of people from violent, oppressed and alienated communities, AfroReggae now runs over 60 projects involving thousands of the favelas' children.

As well as facilitating UK performances, PPP also co-ordinated AfroReggae workshops for young people at the Arcola Street theatre in Hackney, building on the Brazilian group's strategies and experiences of working with young people at risk of involvement in organised crime. Together, they sought opportunities for mediation and alternatives to violence. This model of using the performing arts as a catalyst for change is clearly transferable, as relevant in east London as in Rio de Janeiro.



Professor Laurie Cuthbert, Head of the Department of Electronic Engineering and Co-Director of the Joint Programmes, with a group of students.

China

Queen Mary has secured just under £5 million for a new collaborative programme involving several universities in the UK and China. Innovation China UK (ICUK) was one of eleven winning projects awarded the funds through the Higher Education Innovation Fund in 2006.

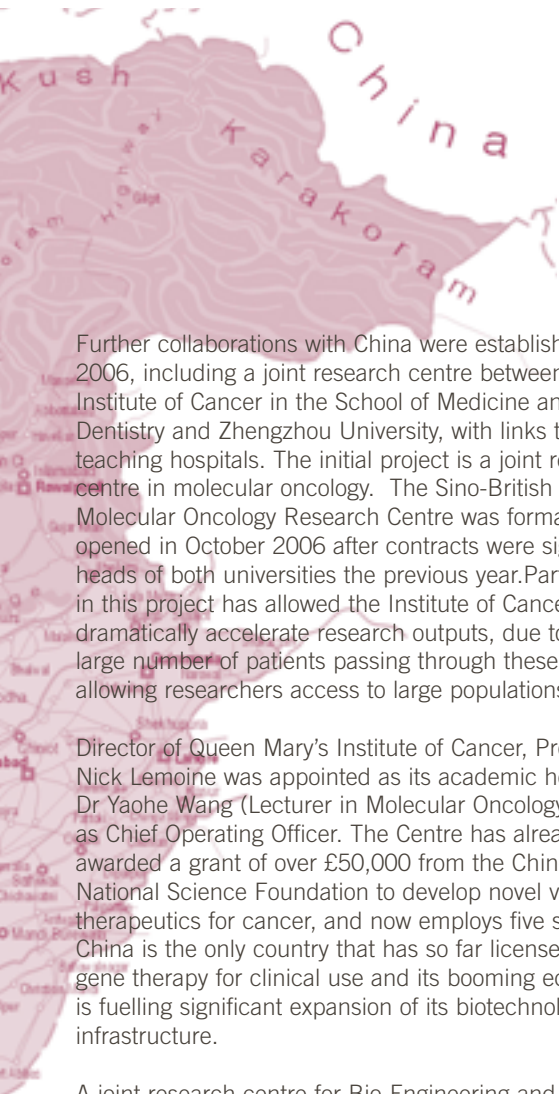
ICUK will be the first collaborative research and knowledge transfer partnership supporting UK and Chinese higher education institutions. It will act as a springboard for UK businesses to access resources in China. Academics based in the UK will have access to leading scientists, expertise and facilities, easing entry into the potential markets of China. Its activities will enhance the profile and visibility of UK science and technology and the international reputation of UK universities. At the same time, it will support enhancement of Chinese universities' capabilities in knowledge transfer.

China has the biggest Research and Development workforce, and the third biggest R&D investment in the world. ICUK represents a great opportunity for the UK economy to benefit from China's emerging economy. It assists UK universities and business in collaborating with China over issues such as funding, and understanding and complying with Intellectual Property (IP) regulations.

ICUK's main activities will focus on areas such as energy – including technologies for the sustainable environment; aerospace; e-science; marine technology; and drug developments and therapies for infectious diseases.

Queen Mary already has established several strong collaborations with Chinese HEIs together with UK companies such as Airbus and QinetiQ in the fields of aerospace, clean energy, nano-technology, biometrics and security, wireless telecommunication and biotechnology. Queen Mary's Department of Engineering, for example, has received over £2 million in collaboration awards from the Chinese Space Agency. The Centre for Commercial Law Studies at Queen Mary has established its reputation as a leader in advising and training staff for the Chinese Patent Office and other agencies in IP and technology transfer laws.

Three years ago Queen Mary was the first university in the UK to launch a joint degree programme with one of China's top universities: the Beijing University of Posts and Telecommunications (BUPT). More than 1,000 students have since enrolled on the double degree courses, and in 2006 the Quality Assurance Agency reported on the programme, endorsing its standards positively. The collaboration is hosted on BUPT's brand new campus, in one of the most rapidly developing areas of Beijing.



Further collaborations with China were established in 2006, including a joint research centre between the Institute of Cancer in the School of Medicine and Dentistry and Zhengzhou University, with links to five teaching hospitals. The initial project is a joint research centre in molecular oncology. The Sino-British Molecular Oncology Research Centre was formally opened in October 2006 after contracts were signed by heads of both universities the previous year. Participating in this project has allowed the Institute of Cancer to dramatically accelerate research outputs, due to the very large number of patients passing through these clinics, allowing researchers access to large populations.

Director of Queen Mary's Institute of Cancer, Professor Nick Lemoine was appointed as its academic head, and Dr Yaohe Wang (Lecturer in Molecular Oncology) acts as Chief Operating Officer. The Centre has already been awarded a grant of over £50,000 from the Chinese National Science Foundation to develop novel viral therapeutics for cancer, and now employs five staff. China is the only country that has so far licensed a gene therapy for clinical use and its booming economy is fuelling significant expansion of its biotechnology infrastructure.

A joint research centre for Bio-Engineering and Materials was also set up between Queen Mary and the Southern Medical University (SMU) in Guangzhou, China in October 2006 and is the first collaboration between the College and a medical university in China. The SMU-Queen Mary Joint Research Centre for Bio-Engineering and Materials is an equal partnership research institute, which promotes academic collaboration and research exchange between the two institutions in biomedical, clinical and related sciences and engineering. The designated Director of the Joint Research Centre is Professor Wen Wang in the Department of Engineering at Queen Mary and the Deputy Director is Professor Ouyang Jun in Basic Medical Science at Southern Medical University.

Dominican Republic

Queen Mary and the Dominican Republic signed a joint medical agreement in March 2006. Prompted by compassionate work undertaken by cell and tissue engineering expert Professor Harshad Navsaria (Institute of Cell and Molecular Sciences) with burns victims from the catastrophic fire in Asuncion, Paraguay in 2004, this collaboration will jointly promote the exchange of ideas, personnel and science in the fields of neuroscience, infection and immunity, gastroenterology and dermatology, and above all, burns. The project was formally launched by the First Lady of the Dominican Republic, Dr Margarita Cedeno de Fernandez, and representatives from the Dominican Republic's Public Health Ministry and the Autonomous University of Santo Domingo (UASD) during a visit to London. The agreement will establish a working group in the Dominican Republic to co-ordinate all activities in key medical areas and enable students and researchers at the UASD and Queen Mary to take forward their training clinically and scientifically. In the burns sector, training exchanges will occur in the form of lectures and hands-on practical experience, and a research project will be undertaken to evaluate the treatment of partial thickness burns with amniotic membrane. The agreement will have an initial duration of three years, which may be renewed thereafter.



Iran

2006 saw the first cohort of Iranian students studying at the Centre for Commercial Law Studies at Queen Mary, University of London, in a ground-breaking new initiative with Shahid Beheshti University in Tehran. Fifteen law graduates arrived at Queen Mary in September 2006 to attend the first two terms of the LLM course as occasional students. After attending a pre-session course in English, the students study three elements of the LLM: multinational enterprises and the law; transfer of technology law, and banking law. They are examined whilst at Queen Mary, and then return to Iran to complete a dissertation and viva, with joint supervision by the College and Shahid Beheshti University.

Pakistan

Building on the Memorandum of Understanding signed in 2005 between Queen Mary and COMSATS Institute of Information Technology (CIIT), one of Pakistan's leading science and technology centres, active collaborations between the two institutions continue. Working together has led to the creation of postgraduate programmes, and faculty development and research initiatives in areas of mutual interest such as materials sciences, bio-materials, fuel cell technology and global finance.



London and The Thames Gateway







“We contribute to London and The Thames Gateway by linking activities in the region to Queen Mary’s internationally engaged research and teaching”

Queen Mary has always had strong links with its community, but its role reaches beyond immediate neighbours in the London Borough of Tower Hamlets to responsibilities in the wider London and emerging Thames Gateway context. In 2006, Queen Mary strengthened partnerships with organisations such as the Mayor of London’s office, the London Development Agency and others, so that the College can play its full part in the continual development of London as the economic engine of the UK, the biggest city in Western Europe and the world’s knowledge capital.

Queen Mary is a major player in generating educational capital in the city and farther afield. Not only does Queen Mary educate and train the region’s future doctors, dentists, health professionals, lawyers and business leaders, but it also contributes to the ‘here and now’ through: substantial economic output; research with both an international and local significance; community projects; and knowledge transfer. Early in 2006, Queen Mary released figures from an economic impact study which demonstrated that it generates employment and output worth £500 million to the UK over the course of one year. Of the total output generated, £266 million was in London. Additionally, the College is one of the largest public-sector employers in Tower Hamlets with almost 3,000 staff working at four campuses across the capital.

With strong existing partnerships and shared activities with local schools and colleges, Queen Mary is well-placed as the lead institution in the London East Thames Gateway Aim Higher Partnership. Over 15 per cent of Queen Mary students come from east London, and the College is committed to improving access to higher education across the region. In 2006, two initiatives in this area stand out. Firstly, a collaboration with the Royal College of Surgeons, creating a taster scheme providing students who would not traditionally consider a medical career with a practical insight into the working environment of surgeons. The scheme allows students to add value to any medical application that they might make in the future. More than 40 Year 12 students from across the London East Thames Gateway region participated in this project, which included a three day attachment to a surgical department; presentations from doctors; attending workshops on suturing, key hole surgery simulations and a skills-based day. Secondly, the College hosted a project designed to give students with special educational needs an experience of university.



Four three-day taster schools were organised, targeting young people with specific learning differences (dyslexia, dyspraxia and dyscalculia); visual impairment; hearing impairment; autistic spectrum disorders and Asperger's syndrome; from schools and colleges across Hackney, Newham, Tower Hamlets and Redbridge. Students met undergraduate ambassadors with similar disabilities to

hear about their experiences of applying to, and studying at university. Presentations from SKILL, the national bureau for students with disabilities; the Royal National Institute for the Blind; the Royal National Institute for the Deaf; the National Autistic Society and other organisations informed students about services for young people in higher education.

Biosciences Innovation Centre to drive east London's economic growth

In July 2006, Queen Mary announced plans to develop a new £28 million Biosciences Innovation Centre at its Whitechapel Campus. Jointly developed with the London Development Agency (LDA) with the support of Thames Gateway funding from the Department for Communities and Local Government, the Innovation Centre will be located adjacent to Queen Mary's School of Medicine and Dentistry.

The new Innovation Centre will provide a state-of-the-art facility comprising approximately 40,000 square feet of laboratories and offices designed specifically for high technology companies operating in the Life Sciences sector. The LDA wants to promote enterprise in Life Sciences – a sector with high potential growth. The Innovation Centre will attract start-up companies from Queen Mary, as well as independent companies from further afield. In total, the Innovation Centre

expects to contribute to the employment of up to 300 skilled professionals. The Centre also anticipates supporting an additional 60-80 jobs in services in the local community, from minicab services and printing shops, to café bars and restaurants, and more. Queen Mary's expertise in Medicine and Life Sciences will be strengthened by this new resource. The Innovation Centre will provide the high quality facilities needed by entrepreneurial scientists to commercialise their research, allowing them to remain in east London, as well as attracting new companies to this part of the capital. This new development will contribute to the ongoing renewal process of east London, creating and supporting new jobs for the local and regional community.

The Innovation Centre will be located in an area of east London that is developing into a 'Life Sciences cluster', centred around Queen Mary's Medical School and the Royal London Hospital. This network of world class clinical, teaching and research resources offers exciting benefits for both healthcare research and the development/regeneration of the area.



London's first free university Legal Advice Centre

Help is at hand for those in the east London community seeking legal advice. Queen Mary launched its Legal Advice Centre in November 2006. Unique in London, the Centre is the first university-administered office to offer free legal advice to members of the public. The Queen Mary Student Pro Bono Group (QMSPBG) has been the driving force behind the creation of the Centre, launched by the School of Law. Student members of the Department volunteer to advise on legal issues. The Centre was officially opened by the

Attorney-General, Lord Goldsmith, on 3 November 2006. Students provide advice under the supervision of qualified volunteer solicitors, on areas such as employment, housing and consumer/contract law. This covers most of society's common legal issues - including dismissal, bullying, sexual harassment, landlord and tenancy disputes, and credit agreements.

The Queen Mary Student Pro Bono Group is the largest in the country and was set up in 2004 by students, Daimian Masters and Julie Pinborough. Julie Pinborough explains: "We began the Pro Bono Group after recognising there was a vacuum in the legal assistance provided to local communities. The



With an international profile, Queen Mary believes that it can make a link between its global research and teaching activity and its east London roots. At the last national Research Assessment Exercise in 2001, 80 per cent of Queen Mary's research output was deemed to be of international significance. However, a substantial element – medicine and social sciences in particular – has direct relevance to its east London community.

The William Harvey Research Institute, within the School of Medicine and Dentistry, celebrated its twentieth anniversary in 2006. With a focus on cardiovascular research, the Institute also announced the development of a new facility for cardiac research in the Charterhouse Square campus. Close to Barts Hospital in West Smithfields, the synergy of research and clinical delivery makes Barts and William Harvey combination a powerful force in treating and finding solutions for heart disease and other cardiovascular conditions, which have a particularly high incidence in east London.

Similarly, a project to vaccinate Hajj pilgrims originating from the proximity of Queen Mary's School of Medicine and Dentistry to the East London mosque, developed into a national conference on the issue in November 2006. Hosted by the Muslim Council of Britain, the Health Protection Agency and Queen Mary, the conference discussed strategies for providing immunisation and health advice for the 25,000 Britons, including 1,000 people from east London alone, who make the Hajj pilgrimage to Mecca each year.



success of the QMSPBG is founded on a proactive and creative approach. Over the years, the group – which has been described as one of the best Pro Bono models in the country - has helped a number of community groups with legal problems. Recent projects include 'StreetLaw' which works with a local homeless shelter in Whitechapel, and a schools project which makes children aware of their legal rights." All sessions in the Centre are supervised by law firms so that students can learn from professionals. Legal experts from Field Fisher Waterhouse, Richards Butler, and Reed Smith are on hand to discuss each case and oversee the students' progress.



As one of the major higher education players within the five Olympic boroughs in London, Queen Mary relishes the opportunities offered by the 2012 Olympic and Paralympic Games. Working with partner institutions across the region, and through London Higher, the umbrella organisation for HE institutions in the capital, Queen Mary has already pledged involvement through accommodation provision at its Westfield Student Village and assistance with volunteers and language interpretation through student participation.

launch LCACE and Queen Mary's Arts and Cultural Enterprise Manager have delivered over 30 events at cultural centres across London.

As one of the capital and region's major research institutions, Queen Mary's depth and breadth of knowledge is an immense asset, on a variety of levels. 2006 saw Queen Mary deepen its commitment to London and the Thames Gateway region across teaching, research, knowledge transfer, regeneration, employment and community activity. This engagement is a key component of Queen Mary's future as well as its past.

In late 2005, Queen Mary joined Knowledge East, a consortium for knowledge exchange involving eight partner universities and institutions across east London and Thames Gateway. Providing solutions, specialist knowledge and access to experts, Knowledge East connects business with university expertise.

Queen Mary is the lead partner in biosciences, healthcare and commercialisation and the School of Biological and Chemical Sciences has already been involved in providing high-level testing facilities for London based science start-up company Intelligent Fluid Solutions (IFS).

Queen Mary continues to be an active partner in the London Centre for Arts and Cultural Enterprise (LCACE), an initiative which promotes the exchange of knowledge and expertise within the capital's arts and cultural sectors. Since its



East London students reached for the stars

British Astronaut Piers Sellers met space scientists of the future at a special event organised by the British Interplanetary Society (BIS) and hosted by Queen Mary, in November 2006.

Sellers provided an insight into his recent 'STS-121 Space Shuttle Return to Flight' test flight, which took place in July, and answered questions from the audience, made up of students from Queen Mary, and Morpeth School in Tower Hamlets.

Professor Carl Murray from Queen Mary's Astronomy Unit, also met students on the day, and showed them some of the stunning images produced by his work on the Cassini-Huygens mission to Saturn.

Brigitte Burrows, Head of Education Liaison at Queen Mary, commented: "This was a fantastic opportunity for local young people to see, first hand, the sort of science that takes place beyond the classroom, broadening their horizons, and inspiring them to take on science at a higher level."



"This was a fantastic opportunity for local young people to see, first hand, the sort of science that takes place beyond the classroom, broadening their horizons, and inspiring them to take on science at a higher level."





ed der Folge $\left\{ \frac{1}{n} \right\}_{n \in \mathbb{N}}$ die Zä

London hub for 'more maths grads' project

Queen Mary was named in October 2006 as one of three institutions involved in a £3 million project to increase the number of mathematical sciences graduates in England over the next three years.

The project, Increasing the Supply of Mathematical Sciences Graduates, or 'More Maths Grads', funded by the Higher Education Funding Council for England (HEFCE) involves working directly with local schools, colleges and employers to develop careers information and education. The project also encourages school and college students to maintain an interest in mathematics after GCSE and develop the undergraduate mathematics curriculum to ensure it supports a wide-range of students, helping to increase student retention.

Queen Mary will act as the hub for the London element of the project, which will also run in pilot areas in the West Midlands, and Yorkshire and Humberside. Each region will organise a series of initiatives designed to increase the overall numbers studying mathematics and to widen participation amongst groups who are currently under-represented on mathematical sciences courses at university.

Maths education has come under scrutiny recently with falling numbers of specialist maths teachers and a decline in the number of students. A report, *Making Mathematics Count*, by Professor Adrian Smith, Principal of Queen Mary, drew attention to the crisis. The report, published in 2004, found that roughly 90 per cent of GCSE students drop the subject at 16, and of those who remain, about 90 per cent again drop it at 18 – leaving around 5,000 new maths undergraduates a year.

The work in higher education will focus on developing the undergraduate mathematics curriculum to give students greater flexibility and choice about how they learn. This will include reviewing current teaching, learning and assessment methods to see how students can best be supported with their studies at university. The project will also look at how new technologies can be best used to assist teaching.

Resources – people, facilities and balancing the books





“Develop and nurture our key human, physical and financial resources.”



Like any organisation, Queen Mary could not exist without these three fundamental resources in place. This year's Annual Review acknowledges the essential role that the balance of investment in people and buildings and facilities plays in our success. One component could not function without the other. Great teachers, researchers and students need the best facilities and administrative structures for learning, scholarship and discovery.

2006 saw the consolidation of earlier investment in Queen Mary's estate. Spanning four campuses in east and central London, the College has invested almost £200 million in improving physical resources for staff and students.

This year, Phase Three of the Westfield Student Village opened at the start of the autumn term, bringing the number of students living at the Mile End campus to 2,000, with new facilities for the Students' Union, including a multi-gym and café, to follow in 2007. We now have the best student accommodation in central London, and outside term time, the residences are attracting increasing interest from conferences and visitors. Our commitment to enhancing the College's environment has the knock-on effect of contributing to the regeneration of east London, with the creation of some of the most interesting pieces of modern architecture seen on any university campus. The Blizard building and Lock-keeper's Cottage won Royal Institute of British Architecture (RIBA) London Awards in 2006, and the College was also short-listed as RIBA client of the year.

We have also been committed to restoring and renovating older buildings. June 2006 saw the reopening of the Octagon, the centrepiece of the Queens' building at the heart of the Mile End Campus. Beautifully restored to its original glory, this stunning room – modelled on the Reading Room of the British Museum – is now a state-of-the-art conference and entertaining facility.

Of course, resources are much more than our buildings and facilities. Our most important asset is our people, including our staff. 2006 has seen a great number of new members of staff come to work at Queen Mary. Twenty-four new Professors were appointed, in fields ranging from Energy Engineering to Child Health to Public Law. One hundred and sixty-seven new members of staff joined in academic roles, alongside 159 new researchers.

Across the university sector, a new pay framework was adopted in 2006. At Queen Mary, this formed part of a larger ongoing modernisation of pay, terms and conditions. As well as rewarding our staff commensurately, Queen Mary is keen to remain as competitive as possible in the higher education market. Negotiated with staff unions, Queen Mary offered one of the most generous packages in UK higher education, with professorial starting salaries amongst the highest in the country. As a result, the vast majority of staff has seen a pay rise in 2006, and in addition London weighting has now been integrated into salaries and is subject to cost of living rises. Work in this area continues.



In 2006, Queen Mary also pledged to work towards having the UK's first 'living wage' campus. This commitment extends to all staff working at the College, whether they are employed directly or subcontracted via another organisation. When implemented, this will mean no one will be paid less than a London living wage (currently set at £6.70 an hour), or receive fewer than 20 days' holiday and ten days' sick pay.

The School of English and Drama was the College's first academic department to be awarded Investors in People status. It joins the ranks of the Human Resources department which also received this accolade in 2006, as well as the College Nursery; Conference, Catering and Residential Services (CCRS); and Education and Staff Development.

In the last twelve months, Queen Mary initiated its first Long Service Awards, presented to members of staff who have worked at the College for 25 years or more. In 2006 twenty five individuals, ranging from professors, lecturers and other academics to librarians, cleaners and ground staff, were recipients of Long Service Awards, including a personal letter from the Principal and a gift to the value of £250. Together they represented over 625 years of employed service to the College.

'Queen Mary has been quietly producing some of the best new university architecture in the UK'

The Independent February 2006

On the financial side, Queen Mary saw a 9.5 per cent increase in real terms of its funding allocation from the Higher Education Funding Council for England (HEFCE) for 2006/07. The largest percentage increase of any of the country's pre-1992 universities, and following the largest increase of all UK universities from the previous year, this reflects HEFCE's confidence in Queen Mary and our ability to attract talented students.

Queen Mary's HEFCE research funding also increased dramatically this year, with an 18.2 per cent rise to £21.7 million, an increase that outweighs the sector's average increase of 4.8 percent. Again, this demonstrates the high esteem in which Queen Mary's research is regarded.



Forget camping, try campus

Come the summer, university halls of residence have a life that students never dream of

Mira Katbamna

Single beds. Scratchy linen. Shared (and scum-laden) bathrooms. Maybe it's just me, but these are not things I fantasise about when planning my holidays - so when my editor suggested I try out Queen Mary University of London's holiday apartments (also known as student rooms, temporarily vacant over the summer), I was a little apprehensive.

I was also a bit surprised. Stay in university accommodation as a tourist? I didn't know you could - but it seems that while I have been blithely patronising less-than-attractive B&Bs, the smart money has been on what those in the know call "university residences", which range from backpacker specials at £16 a night, to a stay at the Salisbury Green Hotel, owned by the University of Edinburgh.

It might not have the cache of a five-star hotel, but Queen Mary's rooms and holiday apartments are certainly not to be sniffed at. A 10-minute walk from Mile End tube, Queen Mary has spent a lot of money trying to consolidate most students and teaching on to one site.

The result is that behind the imposing Victorian Queens building at the front entrance, you quickly find yourself in a perfectly laid out, and brand new, student village. It has shops, restaurants, open green spaces. It even has its own 24-hour reception, so once I've collected my key and welcome booklet, conferences and groups manager Sue Mussett shows me my room.

When I get there, any doubts vanish pretty quickly. I've been allocated a spotless single, with ensuite bathroom, shared kitchen, and a view over the Grand Union canal and the 90 acres of Mile End park. The bed is comfy, the shower more powerful than drippy, and I have clean towels and internet access. It is certainly a far cry from the university halls of my youth, but I still go off

to check out the shared kitchen feeling slightly apprehensive. Although kitted out with only the absolute basics, the kitchen is clean and looks exactly like a holiday apartment. In fact, you'd never guess that students live here at all. All in all, it's lovely, and with prices starting at £20 a night, probably one of the cheapest places to stay in central London.

I am sharing the corridor (and kitchen) with Lindsey Wepler, 23, a Canadian student, who is on holiday in London for two weeks. "I found out you could stay here on the internet, and it's great," she says. "It's really cheap, but it's also really close to the centre of town, and if you're on the canal side you can look out of your window and see swans going by. The room is basically what you would get in a hotel in



'Like a hotel only cheaper': Canadian tourist Lindsey Wepler

terms of how often it's cleaned and towels, but it's so much cheaper."

Students and backpackers aren't the only ones who've discovered the joys of the summer campus. South Africans Dave and Greta Tillet, both in their 60s, are semi-retired and visit London regularly - and when they do, they always stay at Queen Mary. "The rand is very weak compared to the pound so we are always looking for budget accommodation - but that's only one part of the equation," Dave Tillet explains. "We found out about university residences from Visit Britain and we've stayed at a few other universities as well, but we have found the east end of London to be absolutely beautiful, very convenient for all the sights, and the staff are so kind and friendly."

Like many tourists who stay at

Queen Mary, Tillet says one of the main reasons why he and his wife come back each year is the great atmosphere - and he is as enthusiastic about his fellow guests as he is about the staff. "You share a kitchen and a common room, so you are inclined to meet other people," Tillet explains, "and because everyone else is on holiday too, people are less stressed and very friendly." Mussett agrees. "It's not like staying in an anonymous B&B - you meet all the staff and your fellow guests."

In fact, Mussett and her team go out of their way to help visitors make new friends. "Most of our bookings are done online, and guests can choose to tick a category to tell us how old they are - we can then ensure we never put a load of noisy 18-year-olds with a retired couple," she says. "And if we can, we try to match people up, especially if they are staying a long time, because they will be sharing a kitchen and getting to know each other."

But although the tourists are having a great time, what do students and academics think? Perhaps unsurprisingly, Mussett thinks most of the students are totally oblivious: "I think most of them think the whole place closes the moment they leave!" - but says the academics are slightly more ambivalent. "A lot of them disappear during the summer, but those who remain are OK about it," she says. "They are not too keen on the 400 summer-school kids running around the campus, but they hardly see the holiday guests because they are usually out and about during the day."

However, whether or not teaching staff approve, holiday guests are here to stay because, according to Mussett, turning the university into a giant B&B makes financial sense. "Last year we finished building the student village, which gave us 1,000 new rooms, but no more teaching space for conferences, so we knew we had to find a new way to promote the accommodation," she says. "In a way it is more work for us, but we are a self-funding department and all the money we raise is pumped back into student facilities, so it's definitely worth it."

Sitting by the banks of the canal, Jackie Collins in one hand, room key in the other, I can only agree with her.

The Guardian,
July 2006



Staff and student awards

We are pleased to report the following awards and distinctions for members of staff and students...

The 2006 Queen's New Year's Honours List saw a knighthood awarded to the Warden of Barts and the London, Queen Mary's School of Medicine and Dentistry. **Professor Sir Nicholas Wright** was commended for services to Medicine.

The Queen's Birthday Honours saw awards for two members of Queen Mary staff.

Professor Irene Leigh (Institute of Cell and Molecular Science) was awarded an OBE for her services to medicine. **Professor Sheila Cheeroth** (Institute of Health Sciences Education) was honoured for her services to refugee doctors and healthcare.

Queen Mary received nominations in four categories of *The Times Higher Education Supplement's* annual Awards. **Professor Lisa Jardine** (English and Drama) won the prestigious Lifetime Achievement Award and **Dr Dan Todman** (History) won Young Academic Author of the Year Award.

The Principal, **Professor Adrian Smith FRS** was appointed Deputy Vice-Chancellor of the University of London. He was also awarded an Honorary Doctor of Science degree from the University of Loughborough in recognition of his contributions to mathematics research and mathematics education policy.

Two Queen Mary colleagues, **Professors Elizabeth Davenport** (Institute of Dentistry) and **Evelyn Welch** (English and Drama) were the first members of staff to become National Teaching Fellows, a scheme developed by the Higher Education Academy to promote excellence in teaching and learning.

Professors Jacqueline Rose (English and Drama) and **Michael Moriarty** (Modern Languages) were elected as Fellows of the British Academy.

The Academy of Medical Sciences elected **Professor Nick Lemoine** (Institute of Cancer), **Professor Fran Balkwill** (Institute of Cancer) and **Professor Malcolm Law** (Wolfson Institute). They join a distinguished list of 846 medical Fellows.

Professor Jeff Duckett (Biological and Chemical Sciences) was made an Honorary Member of the British Bryological Society.

The Royal Society's 2006 Buchanan Medal was awarded to **Professor Ian MacLntyre** (William Harvey Research Institute) for his contributions to the field of clinical pharmacology.

Professor Parveen Kumar (Institute of Cell and Molecular Science) was elected as the President of the British Medical Association. The Department of Health bestowed eight Clinical Excellence Awards to Queen Mary academics, recognising the exceptional contribution of NHS consultants to the values and goals of the NHS. **Professor Pankaj Vadgama** (Materials) and **Professor Kate Costeloe** (Institute of Health Sciences Education) received platinum awards.

Professor Finbar Cotter (Institute of Cell and Molecular Science) received a gold award. **Professors David Rampton** and **Ian Sanderson** (Institute of Cell and Molecular Science) and **Professor Nick Lemoine** (Institute of Cancer) received silver awards. **Professor Mark Caulfield** (William Harvey Research Institute) and **Professor David Leslie** (Institute of Cell and Molecular Science) received bronze awards.

Professor John Oxford (Institute of Cell and Molecular Science) was elected chairman of the new Hygiene Council whose role is to fight infection.

Dr Bronwyn Parry (Geography) was appointed a permanent member of the Nuffield Council on bioethics.

Professor Julian Evans (Materials) won the prestigious Institute of Materials Kroll Medal in recognition of his significant contribution to the scientific understanding of materials chemistry.

Dr Paulo Oliva (Computer Science) and **Dr Stephen Rossiter** (Biological and Chemical Sciences) were appointed as Royal Society University Research Fellows.

Dr Maria Nystrom (Institute of Cancer) and **Dr Jonathan Collier** (Institute of Cell and Molecular Science) won senior and junior prizes, respectively, at the International Association of Dental Researchers general session in Australia. Postgraduate researcher **Danielle Dicarca** (Institute of Cancer) was awarded the senior Colgate prize at the British Society for Dental Research's European federation.

Former President of Queen Mary's Students' Union, **Vicki Slater** was elected President of the University of London Union (ULU).

Queen Mary's Blizzard Building, home to the Institute of Cell and Molecular Science, and the **Lock-keeper's Cottage Graduate Centre** won Royal Institute of British Architects (RIBA) awards for their high architectural standards and contribution to their local environment. The Blizzard Building also won a Civic Trust Award for making an outstanding contribution to the quality and appearance of its local environment.

Students **Michael Attenborough** and **Vijaiya Poopalasingham** (Law) triumphed in the Essex Court Chambers National Mooting Competition, beating strong competition from the University of Birmingham to take home the prestigious silver mace.

Undergraduate **Shikha Attray** won the General Dental Council's Prize for Professionalism dental student award and student **Katie Sarah Grigg** won the Combined Dental Hygiene/Dental Therapy student award. Student **Richard Damerou** won the Junior Colgate Prize of the British Society for Dental Research.

Finance

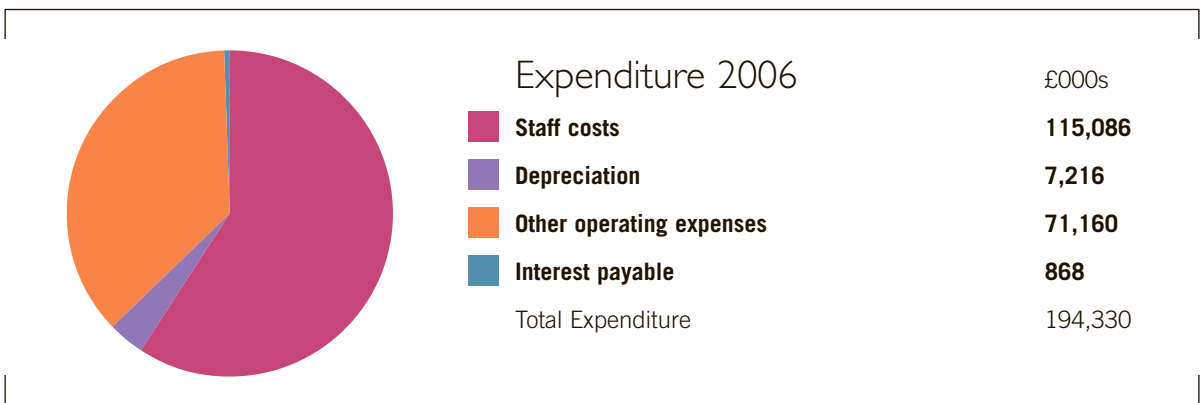
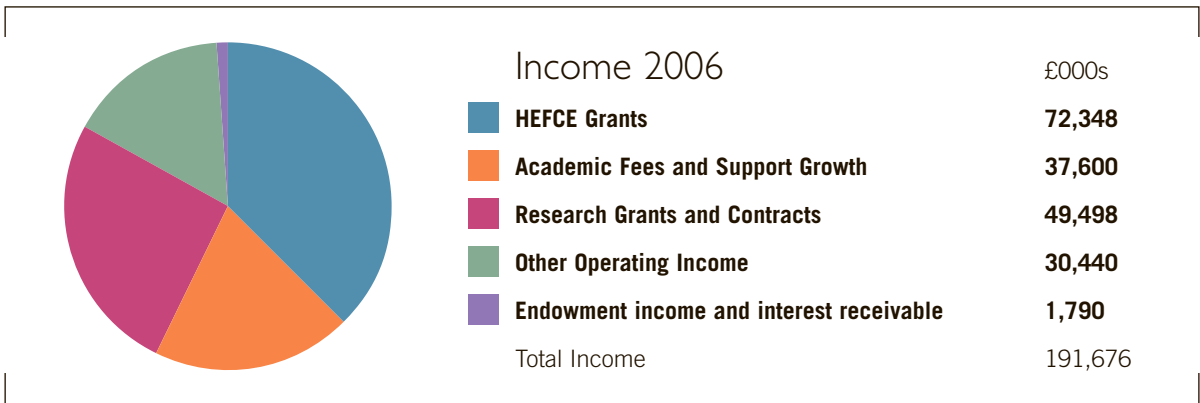
The financial results for 2005-06 show that the College performed well.

There was an increase in turnover of ten per cent, following a similar rise for the past three years. Income from student fees and support grants increased by over 15 per cent with continued growth in income from overseas students, against the trend in the higher education sector in the UK.

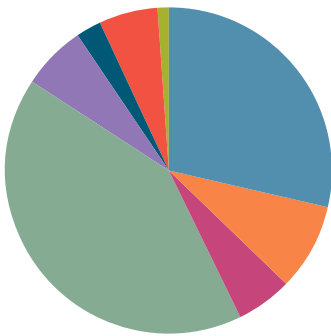
Queen Mary places great importance on the level of research grants, and was therefore pleased that there was a further improvement in this area of 14 per cent from 2005, the fourth year that has shown similar increases.

The College continues its capital investment programme and £8.8 million was spent on refurbishment of teaching and research facilities, as well as £9.3 million on the third phase of the student village.

The College is planning to generate surpluses of at least three per cent per annum in order to ensure financial sustainability. While there are many risks facing the sector, including further national pay awards and appropriate funding of pensions, adequate provision for bursaries, tightening in the market for international students and uncertainties with respect of the financial outcome of the Research Assessment Exercise, the College is optimistic that these surpluses can be achieved.



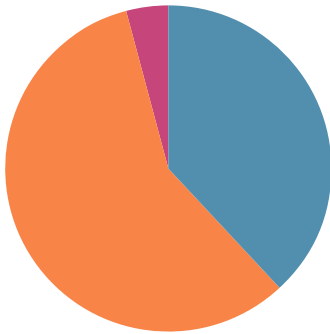
Research Grants and Contracts £000s



■ Research Councils	14,259
■ UK central government bodies	4,272
■ UK industry and commerce	2,647
■ UK based charitable and health bodies	20,616
■ European Community	3,039
■ Other overseas countries	1,345
■ Other	2,796
■ Deferred capital grants released in year	524

Total Income 49,498

Facts and Figures



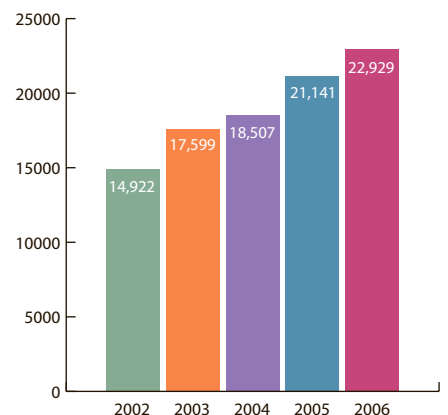
Student population 2005-06

■ Undergraduate	9,572
■ Postgraduate Taught	1,456
■ Postgraduate Research	998
Total	12,026

Student population 2005-06

Total population	12,026
FTE students numbers	11,418
Full-time students	10,809
Part-time students	1,217
Number of male students	6,066
Number of female students	5,960
Number of mature students >21 (u/gs)	3,623
Home students	8,330
EU students	695
International students	3,001

Undergraduate applications



Honorary Fellows and Graduates

Mr CWM Abraham	1990	Professor ONV Glendinning	1992
Dr Enrique Alonso Wulff	2005	HRH The Duchess of Gloucester, GCVO	1991
Dr J Alvey, CB, FREng	1988	Professor Sir RM Goode, QC, CBE, FBA	1990
Professor Olive R Anderson	1994	Mr Piers Gough, CBE, RIBA2000	
Professor Sir William Asscher	1998	Dr DM Gray	1985
Professor Sir Patrick Bateson, ScD, FRS	2000	Mr SJH Gray, CBE	1985
Professor Henry Beker, FREng	2004	Mr JJ Gross	1986
The Rev Dr Joyce Bennett, OBE	1994	Mr PD Hall, OBE	1967
Emeritus Professor G Michael Besser, MD, DSc, FRCP, FMedSci	2005	Professor Sir Peter Hall, RBA, MAE, PLD	
Professor EA Bevan	1993	Hon MRTI, Hon FRI BA	1983
The Rt Hon The Lord Bingham of Cornhill	1992	Professor AT Hatto, FBA	1991
Professor CV Bock	1992	Roger Henderson, QC	2006
Professor DC Bradley, FRS	1988	Professor Eric Hobsbawm, CH, PhD, FBA	2004
The Lord Brooke of Sutton Mandeville, CH, PC, FSA	1996	Dr PP Holmes	1986
Sir Trevor Brooking, CBE	2005	Dr John Horder, CBE	1997
Professor Yvonne Carter	2004	Dr FH Horn	1990
The Hon Peter Caruana	1998	Mr PAB Hughes, CBE	1986
Professor John Chalker	1993	Professor MW Humphrey Davies	1984
The Rt Hon Baroness Chalker of Wallasey	1998	Sir Andrew Huxley, OM, FRS, HonFREng	1986
Sir John Chalstrey FRCS	1997	Dame Tamsyn Imison, DBE, MA, FRSA	2004
Miss Gwen Chambers	1990	The Rt Hon The Lord Jenkin of Roding	1990
Dr KB Chan	1998	Mrs Ruth Prawer Jhabvala, CBE	1983
Dr PF Chester, FREng	1991	Professor Anne Jones	1991
Professor JF Clarke, FRS	1992	Dr GO Jones, CBE	1969
Professor Peter JB Clarricoats, FRS	2000	Professor Peter Kalmus, OBE, FInstP, CPhys	2004
The Rt Hon Lord Clinton-Davis	1992	Professor Sir Frank Kermode, MA, FBA	2004
Professor Richard S Clymo	2001	Professor Geoff Kirk, RDI, CEng, FIMechE, FRAeS, FIED, FRSA	2005
WL Cockburn, DFC	1991	The Lord Levene of Portsoken, KBE	1994
Professor RD Cohen, CBE	2000	Professor Jintong Lin	2001
Professor David Coward	2001	Sir Norman Lindop, DL	1975
The Honourable Mrs Justice Cox, DBE	2005	Mr DJ Lyons, CB	1969
Mr Michael Crystal, QC	1996	Professor Sir Michael Lyons, KT	2002
Professor The Lord Currie of Marylebone	1997	Professor IG Macdonald, FRS	1991
Dr Paul Dean, CB	1984	Professor AC MacIntyre	1984
Professor AD Deyermond, FBA	1999	Mr Bryan Magee	1988
Professor AL Diamond, QC	1984	Professor Sir Peter Mansfield, FRS	1985
Professor Christopher John Dickinson	2002	Professor DH Martin	1996
Mr Andrew Dilnot	2004	Mr Yosuke Masuda	1988
Dr DJ Drewry	1991	Dr Margaret Mein	1993
Professor Roy Duckworth, CBE	1997	Sir James Menter, FRS, FRSE	1986
Dr MJ Duffell	1993	Sir Peter Michael, CBE	1983
Mr Anderson Dunn	1998	Dr FA Middlemiss	1996
Mr Ong Choo Eng	1990	Mr Patrick Moore, CBE, FRS	1983
Sir Edward Fennessy, CBE	1998	Professor A M Neville, CBE, TD, FREng, FRSE	1997
Ms Eva Figes	1990	Sir Edwin Nixon, CBE, DL	1983
Ms Elizabeth Filkin	1999	Mr Martin Paisner	1994
Professor WJ Fishman	1994	The Rt Hon Sir Michael Palliser, GCMG	1990
Dr Frank Fitzgerald, CBE, FREng	2006	Mr RC Parkin	1991
Professor CR Ganellin, FRS	1991	Professor Gerald Pattenden, FRS	1999
Dr Rita Gardner, CBE	2002	Professor Patrice André Gilbert Pavis	2005
Professor Hazel Genn, CBE, LL.M, FBA	2004		

Professor Sir Denis Pereira Gray	2000
Professor CM Perrins, LVO, FRS	1996
Professor The Lord Peston	1991
Mr Jack Petchey, OBE	2006
Mr Harold Pinter, CH, CBE	1986
Mr John Profumo, OBE	2000
Sr JJ Puig de la Bellacasa, Hon GCVO	1986
Professor The Lord Quirk, FBA	1985
Professor Dame Lesley Rees, OBE	2006
Mr WP Richards	1983
Professor PT Ricketts, OBE	1994
Mr MV Saville, OBE	1984
Dr Patricia Molly Scopes OBE	2001
Professor James Scott, FRCP, FRS	1998
Mrs R Sedgwick, OBE	1971
The Rt Rev'd Dr John Sentamu	2000
Sir Nicholas Serota	1988
Dame Margaret Seward, CBE	1997
Dr N Singer, CBE	1993
Professor Quentin Skinner, FBA	1999
Professor The Lord Smith of Clifton, DLitt, LL.D, DHL, FRHistS, AcSS	2002
Professor EH Sondheimer	1987
Professor David Southwood	2002
Mr DG Stern	1985
Dr JR Stewart, CBE	1981
Professor Sir William Stewart, FRS, FRSE	1992
Mr R C G Strick	1992
Sir Roy Strong, FRSL	1975
Ms Wendy A Taylor, CBE	1993
Dr Joan Thirsk, CBE, FBA	1997
Professor Alan Thomas	2000
Professor Sir John Meurig Thomas, FRS	1990
Professor John B Thornes	1998
Professor Sir Bryan Thwaites	1983
Mr John Travers Clarke	2000
Lady Vallance	1997
Dr M Vargas Llosa	1988
Mr PF Vowles	1990
Professor Herman Waldmann, FRS	1996
Mr Robert W H Wang	1996
Mr AJR Ward	1986
Mr David N Ward	2001
Mr J Adrian Watney	2002
Professor JE Webb	1986
Mr Arnold Wesker, FRSL	1994
The Dowager Lady Westbury, OBE	2006
Dr Alan Lee Williams, OBE	1993
Dr John C Williams, OBE, Feng	1994
Emeritus Professor David Wingate, MA, MSc, DM, FRCP, FRSA	2005
Professor The Lord Winston	1996
The Lord Wolfson, FBA	1985
Mr Stanley H Wright	2001
Professor M G Yudof	1990

Honorary Graduates

Dame Gillian Beer, DBE, LittD, FBA	2000
Sr Augusto Boal	2000
Professor Gustav Born, Hon FRCS, FRCP, FRS	2006
Professor Alexander Bradshaw, BSc, PhD	2005
Lord Butler of Brockwell, KG GCB, CVO	1998
The Rt Hon & Rt Rev'd Richard Chartres	1998
Professor George Ellis, FRSSA	2000
Sir Christopher France, GCB, MA, FMedSci	2004
Professor Michael Green, PhD, FRS, FIP, CPhys	2004
Professor Stephen Greenblatt	2001
Professor Sir Peter Hall, PhD, FBA MAE, HonMRITI, Hon FRIBA	2004
Sir Gordon Higginson, DL, FEng	1999
Professor Sir Tony Hoare, MA, FRS, DRBCS	2005
Sir Martin Holdgate, CB, FBiol	2006
Emeritus Professor Ian G Macdonald, MA FRS	2005
The Rt Hon The Lord Millet of Marylebone	1999
Professor Jean-Pierre Serre	1999
Professor Gayatri Chakravorty Spivak	2003
Professor George Steiner, FBA, FRSL	2006
The Rt Hon Lord Steyn	1997
Ms Janet Suzman	1997
Professor Sir Tony Wrigley, MA, PhD, ScD, FBA	2004
Professor Natalie Zemon Davis	2004

Who's who

Patron

Her Majesty The Queen

Visitor

The Sovereign acting through the Lord President of the Council

President of Barts and The London, Queen Mary's School of Medicine and Dentistry

The Rt Hon The Lord Mayor of London

The Principal

Professor Adrian Smith, MA (Cantab), MA (Oxon), MSc, PhD, FRS, FIS, FIMA

Senior Vice-Principal

Professor Philip Ogden, BA (Dunelm), DPhil (Oxon)

Vice-Principal and Warden, Barts and The London, Queen Mary's School of Medicine and Dentistry

Professor Sir Nicholas Wright, MA, MD, PhD, DSc, FRCS, FRCPath, FMedSci

Vice-Principal

(NHS Liaison)

Professor Ray Playford PhD(Lond), FRCP(Lond), FRCPath, FMedSci

Vice-Principal

(Science and Engineering)

Professor Ursula Martin, BA MA (Cantab), MSc, PhD (Warw), FBCS, FIEE, CEng

Vice-Principal

(Humanities, Social Sciences and Laws)

Professor Trevor Dadson, BA(Leeds), PhD(Cantab)

Vice-Principal

(Teaching and Learning)

Professor Morag Shiach, MA (Glas), MA (McGill), PhD (Cantab)

Director of Resources

Dean Curtis, CPFA

Director of Human Resources

Susanne Byrne

Director of Corporate Affairs

Nigel Relph, BA, MA (Liv)

The Council of the College

Chairman of Council

Dr Colette Bowe MSc, PhD

Vice-Chairman

Mr Jocelin Harris, MA

Treasurer

Charles Perrin, CBE, MA, (Oxon) Hon MRCP

Ex Officio Members

The Principal

Professor Adrian Smith, MA (Cantab), MA (Oxon), MSc, PhD, FRS, FIS, FIMA

Vice-Principal and Warden, Barts and The London, Queen Mary's School of Medicine and Dentistry

Professor Sir Nicholas Wright, MA, MD, PhD, DSc, FRCS, FRCPath, FMedSci

Senior Vice-Principal

Professor Philip Ogden, BA (Dunelm), DPhil (Oxon)

President of the Students' Union

Ed Marsh

Appointed members

Jocelin Harris, MA

Peter J Harris

Dr Colette Bowe, MSc, PhD

Dr Alicia Jolles, BA, PhD

Charles Perrin, CBE, MA, (Oxon) Hon MRCP

Anthony Walker

Elected members (Academic Staff)

Professor Roger Corder, BSc, MSc, PhD, MRPharmS

Professor Tom MacDonald, PhD, FRCPath, FMedSci

Professor Harshad Navsaria, MSc, PhD

Jon Rowson, BSc (UMist), MSc (Essex)

Professor Chris Reed, BA (Keele), LL.M

Professor Graham Thompson, BSc, PhD, DIC,

ARCS, CPhys

Professor Evelyn Welch, BA (Harvard), PhD (London)

Elected member (Academic Related Staff)

Dr Elizabeth Smith, BSc, PhD, ACMA

Elected members (Student)

Kayleigh Wall

Co-opted Members

Alan Gibbins, MA (Oxon), FCA

Mary Elford

Vernon McClure, BA

Elizabeth Hall

David Sizer, FRICS

Sir David Kitchen

David Thomas

Abdal Ullah

Peter Walton

Academic Secretary and Secretary to Council

Wendy Appleby



Annual Review

2006



Celebrating
125 years of achievement

Queen Mary, University of London
Mile End Road
London
E1 4NS
www.qmul.ac.uk