

# Postgraduate Open Evening

Wednesday 11 February, 2015  
4.30pm-7.30pm



Queen Mary  
University of London

[www.qmul.ac.uk](http://www.qmul.ac.uk)

# Welcome to Queen Mary University of London



## What does it mean to be a postgraduate student at Queen Mary?

It means studying at a research-led Russell Group institution that has the further development of a thriving postgraduate student community as one of its core objectives.

Queen Mary has a long-standing commitment to research excellence. The 2008 Research Assessment Exercise confirmed Queen Mary to be one of the rising stars of the UK research environment and the Research Excellence Framework 2014 placed us 9th among multi-faculty institutions in the UK, demonstrating that this upward trajectory has been maintained.

This achievement is derived from the talent and hard work of our academic staff in all disciplines, and the colleagues who support them. We continue to invest in our research capacity and are able to attract some of the brightest minds to come and work at this institution.

Our postgraduate students benefit directly from this research culture and are given a learning experience that is qualitatively different to that provided at undergraduate level. Teaching for those on taught courses is provided at a substantially more advanced level, which draws even more closely on state-of-the-art developments and knowledge, as developed in part by this institution.

Research students have the opportunity to participate directly in this cutting-edge work and to help push the boundaries of knowledge even further. We also look to our postgraduate community to form the basis of our next generation of leading academics and thereby help keep Queen Mary at the forefront of research excellence. We encourage and support students with the talent and desire to pursue an academic career to make this transition.

We hope that you will decide to join us. Your experience here will be stimulating, challenging and rewarding. Please enjoy the evening and ask any questions that you may have.

A handwritten signature in black ink, which appears to read 'Simon Gaskell'. The signature is fluid and cursive, written on a white background.

**Professor Simon Gaskell**  
President and Principal

# Open Evening timetable

4.30pm onwards

## **Registration**

Queens' Building Reception

---

4.30-7.30pm

## **Subject Fair**

Octagon, Queens' Building

The Subject Fair will be open all evening and is your opportunity to talk to academic and support staff from across the College

5.45-7pm

## **Campus tours**

If you would like a Campus Tour with one of our current students, please go to the Campus Tours desk in the Subject Fair

Introductory talks

**All talks will take place in the Skeel Lecture Theatre in the People's Palace, please see the programme map or speak with a member of staff for directions**

5.15pm

## **Welcome to Queen Mary**

Professor Peter McOwan  
Vice-Principal (Public Engagement  
and Student Enterprise)

5.30pm

## **Fees and Funding**

Pat Power, Deputy Director of Marketing  
and Communications

---

7.30pm

**The event will close**

# Welcome to the Faculty of Science and Engineering



Graduate study at Queen Mary is a demanding, exhilarating and, frequently, life-changing experience. We offer excellent teaching, up-to-date facilities, exciting opportunities for interdisciplinary collaboration and a focus on student employability. Queen Mary's Faculty of Science and Engineering takes a multidisciplinary approach to solving global challenges, such as sustainable energy, global security, and health issues such as the ageing population.

We believe that real progress can only be made by teams of researchers, not scientists working in isolation. In the Institutes of Bioengineering and Materials Research, for example, we bring together engineers, chemists, physicists, material scientists, and mathematicians, while in life sciences, our academics work closely with colleagues in Medicine and Dentistry.

Areas of particular strength include the qMedia group, which links technology with the creative arts; Astronomy, which carries out work in collaboration with NASA, ESA, and the UK Space Agency; Neurobiology, which takes an evolutionary approach to behaviour; Physics, which helped to develop string theory and counts a recent Nobel laureate, Sir Peter Mansfield, as one of its alumni; and Networks and Security, which brings together mathematicians and scientists.

Queen Mary is establishing a unique life sciences cluster stretching across its East London campuses, to act as a beacon, attracting partners from Higher Education, the National Health Service (NHS) and industry. Life science education is a priority area in the UK due to the perceived lack of well-trained life science graduates with a high level of numeracy and the ability to deal with the large datasets that modern technology is increasingly making available. The life science industry in the UK and across the world is substantial and growing and there is likely to be an increasing demand for well-qualified graduates in this area.

Queen Mary is currently expanding its suite of postgraduate degrees and has developed a range of new programmes for delivery in 2015 within both the Life Sciences portfolio and more widely, including Advanced Mechanical Engineering and Network Science.

As a high-calibre postgraduate student you will play a key role in contributing to our future success.

We look forward to welcoming you to our lively graduate community and helping you to fulfil your ambitions.

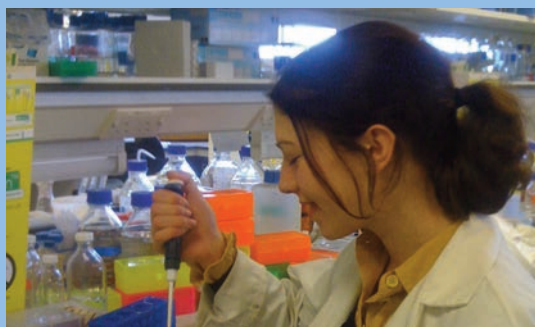
**Professor Jeremy Kilburn**

Vice-Principal, Faculty of Science and Engineering

## Faculty highlights

- 1,000m<sup>2</sup> outstanding research facilities for environmental and chemical analysis, cell and molecular genetic imaging and the study of protein nanostructure and function in the Joseph Priestley Building
- Our particle physicists have played a key role in the discovery of the sub-atomic particle - the Higgs boson - at the Large Hadron Collider in Geneva. They were closely involved in the design and construction of essential components of the ATLAS apparatus, as well as analysis of the particle collisions. Also, our astronomers have discovered new half-mile sized objects breaking through Saturn's F ring while working with images taken from NASA's Cassini spacecraft
- Our materials scientists have played a key role in one of the most important recent breakthroughs in engineering plastics, the development of a lightweight and fully recyclable alternative to traditional polypropylene composites. This has applications in products ranging from suitcases and sports gear to automotive and protective panels
- We have developed a new way of fusing information gathered from CCTV cameras and geographical maps that could be a useful security tool in tracking people in large, busy venues such as airport terminals
- In research funded through the Natural Environment Research Council, we are working on an urgent project to decode the ash tree's entire genetic sequence with a view to stopping Britain's trees from being completely devastated by the Chalara ash dieback fungal disease
- The School of Biological and Chemical Sciences have been awarded a share of the 24 PhD studentships per year for five years funded by the Natural Environment Research Council. Queen Mary is a leading part of the London NERC DTP Consortium that will offer PhD training in specialist environmental sciences in collaboration with higher education institutions and partners including the Institute of Zoology, the Natural History Museum, Royal Botanic Gardens, The Environment Agency and the Forestry Commission

## Graduate profile: Claire Sarell



**Studied:** PhD researching the Copper-Amyloid-beta-Peptide Complex of Alzheimer's Disease: Affinity, Structure, Fibril Formation and Toxicity

**Currently:** Postdoctoral fellow at Leeds University researching the role of RNA aptamers as research tools and diagnostic reagents in amyloid disease.

### **Why did you choose Queen Mary for your postgraduate study?**

I was impressed by the nuclear magnetic resonance (NMR) facility and the calibre of the academics in the School of Biological and Chemical Sciences. The PhD programme was well-structured and there was an excellent supportive and encouraging atmosphere from the academics in the department.

### **What did you gain from your time at Queen Mary?**

My predominant gain was excellent experience in a wide range of techniques that were crucial to my PhD. Having access to specialist publications – NMR, electron paramagnetic resonance spectroscopy, transmission electron microscopy – was extremely helpful. I also developed a clear idea of what a career in academia would involve. Throughout my time at Queen Mary I was supported and encouraged by my supervisor and other academics who offered regular meetings and insightful advice. Transferable skills training and careers advice were both extremely helpful.

### **What are your career plans in the next five years?**

My postdoctoral position lasts for three years. After that I hope to have sufficient publications to apply for a fellowship position. This will allow me to remain in academia and continue research into amyloid diseases such as Alzheimer's disease.

# Welcome to the Faculty of Humanities and Social Sciences



For over a century Queen Mary has prepared men and women for rewarding careers in academia, government and the non-profit and corporate sectors, both in the UK and abroad.

We offer advanced degrees in a wide range of disciplines, from drama to economics, business management and commercial law to history and linguistics. It is marked by some outstanding successes, independently confirmed by impressive rankings. Doctoral education emphasises original and independent scholarship, while masters degree programmes

prepare you for professional life or further study.

Graduate study at Queen Mary has a number of distinctive features: a high level of engagement between distinguished academics and outstanding students, a campus environment that fosters a real community, a commitment to financial support – more than £1m annually, and innovative programmes with demonstrable success in preparing students for a range of careers.

Graduate study with us is a challenging, stimulating and, frequently, life-changing experience. There are many opportunities for cross-faculty, interdisciplinary research and collaboration. Postgraduate students can benefit from our many exciting links with cultural organisations from the Mile End Group, the university's forum for government and politics; Centre for Studies of Home, which draws on the academic expertise of staff in Geography, History, English and Psychiatry, exploring aspects as diverse as interior design, social identity and home-making on a global scale to the Mile End Institute, which is a major new policy centre. Its mission is to deepen and challenge public understanding of the crises facing our systems of politics and governance, and to promote a richer debate about public policy issues and the UK's role within the wider world.

We look forward to welcoming you to our lively graduate community.

## **Professor Morag Shiach**

Vice-Principal and Executive Dean  
Humanities and Social Sciences



## Faculty highlights

- Over 4,750 undergraduate students, 1,900 postgraduate taught students over 320 research students, 409 academic staff and 288 research assistants and support staff
- Annual turnover of £70m
- Research grant awards of around £6m
- Complete University Guide 2015 – top five for several subject areas including second place for Drama.
- Guardian University Guide 2015 – top fifteen in law (third), Economics (fourth) History (tenth) and Geography (fourteenth).
- In the Research Excellence Framework 2014 QMUL was ranked 9th among multi-faculty institutions in the UK
- Top fifteen for graduate starting salaries (*Sunday Times*)
- In 2012 we were accredited as an Economics and Social Research Council (ESRC) Doctoral Training Centre in partnership with Goldsmiths, University of London. Over a period of five years 50 PhD students at the two Colleges will be fully funded for their fees and living costs
- We have been awarded £2.9m by the Arts and Humanities Research Council under the Block Grant Partnership to support the training and supervision of postgraduates
- A new £36m Graduate Centre at Queen Mary will be ready in September 2015 and will include a new lecture theatre, seminar rooms, 24-hour IT and learning spaces, a reading and common room, cafeteria, and 123 bed spaces
- In 2012 £5m of funding was received from AHRC and the ERDF for the Queen Mary-led knowledge exchange hub. Over the next four years, Creativeworks London will build new partnerships and commercial opportunities between academia and the creative industry sector and will include a scheme to support doctoral students securing placements in the creative industries

## Graduate profile: Linda B McElwee



**Studied:** LLM in Media Law, School of Law Scholarship Winner 2012-13

### **Why did you choose Queen Mary?**

I completed my undergraduate studies in Trinity College, Dublin, Ireland, graduating with

a degree in Law and German. I chose Queen Mary based on its great reputation, its ideal location, and the fact that it offered the exact specialism I was looking for. Being offered a scholarship to study at this fantastic university is an absolute privilege.

### **What have you gained from your time at Queen Mary?**

Specialising in Media Law does not just mean learning about more commonly associated aspects of the law. This is a really wide area with a lot of opportunity and Queen Mary is the perfect place to begin building a career in it. Not only are you based in London but you are learning under the instruction of some of the leading academics in growing areas of law such as media and communications, privacy law, intellectual property law and IT law.

The Centre for Commercial Law Studies, situated at Lincoln's Inn Fields, offers great opportunities to get involved in the Faculty, both socially and from a research perspective. We have a Postgraduate Law Society, and a class rep position for each module which makes Queen Mary a really friendly place to be. The facilities in the Centre are also fantastic. There is ample opportunity to build a career in media law from the foundations provided by this course, and I am very glad I decided to come to Queen Mary.

# Welcome to the School of Medicine and Dentistry



At Barts and The London School of Medicine and Dentistry, Queen Mary University of London, we offer access to world-leading expertise at our fantastic campuses in the heart of London – Charterhouse Square, West Smithfield and Whitechapel. We are at the heart of a biomedical environment just a short distance to the Francis Crick Institute and in close proximity to partner hospitals and healthcare providers.

It's an exciting time for the School, with many successes to celebrate. The Research Excellence Framework 2014 results placed us in the top five research-active medical and dental schools in England. This outstanding research underpins our commitment to excellent education and clinical delivery.

The Faculty offers postgraduate courses across a range of disciplines including Cancer, Inflammation, Cardiovascular, Endocrinology, Epidemiology, Gastroenterology and Neuroscience. In all of these domains we address discovery, translational and population based aspects of biomedical science.

Our postgraduates play a key role in contributing to the future of biomedical science and our success. We look forward to welcoming you to our dynamic graduate community and helping you to fulfil your ambitions.

## **Professor Richard Trembath**

Vice Principal (Health) and Executive Dean  
Barts and the London School of Medicine and Dentistry





## School highlights

- We offer a large portfolio of postgraduate programmes in clinical medicine, dentistry and non-clinical medical science, all taught by academics who are leaders in their respective fields
- Leaders in the provision of part-time and distance learning Masters courses (for both clinicians and non-clinicians), allowing people to study whilst continuing in employment and remaining at home
- Over 1,000 postgraduate students and over 500 research staff
- £140m turnover and annual research grant over £50m
- Ranked 5th (Public Health, Health Services & Primary Care) and 6th (Clinical Medicine) of the multi-faculty institutions in the 2014 Research Excellence Framework
- Top rated UK Dental School for quality of dental research, 2014 Research Excellence Framework
- Brand-new dental school and hospital – the £78m Royal London Dental Hospital, housing the most modern and technologically advanced dental facilities in the UK
- We have one of the most scenic campuses in London – Charterhouse Square, home to the William Harvey Research Institute, the Barts Cancer Institute and the Wolfson Institute
- Strategic partnerships with linked NHS hospital trusts (including Barts Health, Homerton, the East London Foundation Trust and Queens' in Romford) mean that the School's research and teaching is informed by an exceptionally wide-ranging clinical environment
- As part of Queen Mary University of London, the School plays a central role in Queen Mary's burgeoning cross-departmental Life Sciences Initiative. The opportunity for medical, natural and social scientists to work together whilst leveraging unrivalled access to a huge and diversified population base in a post-genomic era, is astounding

## Graduate profile: Oluyori Adegun



**Studied:** MSc in Experimental Oral Pathology

**Currently:** PhD in Dentistry

### **Why did you choose Queen Mary?**

I chose Queen Mary because of the diverse cultural environment but more importantly, its reputation as a university par excellence for high-quality teaching and research in dentistry.

### **What did you gain from your time at Queen Mary?**

I researched the role of human papilloma-virus 16 (HPV16) in oral cancer at the new, open plan Blizard Building, which provided access to excellent facilities and the opportunity to collaborate with a diverse range of research groups. I particularly enjoyed presenting my research via posters at international conferences, such as the British Society of Oral and Maxillofacial Pathologists day. I was privileged to get a publication in an international journal and the rare chance of meeting high-profile clinicians, researchers and executives. Overall, my experience on the MSc was so enjoyable that I inevitably wanted to continue my research here. After graduating with a Distinction, I am delighted to now be a PhD student, researching diagnostic imaging for oral mucosal diseases.

### **What are your career plans in the next five years?**

On completion of my PhD at Queen Mary, I intend to undergo a specialist training in oral pathology with a view to having an excellent background in the pathologic basis of oral diseases.

# Doctoral College

The Doctoral College works closely in partnership with academic Schools and Institutes, the Researcher Development team (CAPD), the Careers and Enterprise Centre, and the Students' Union to oversee the recruitment, quality assurance, training and development, academic progression and the award of degrees for QMUL PhD students. We offer:

- Advice on studentships and funding
- Postgraduate research bursaries for fieldwork, conference or training needs
- A mixture of subject-specific and professional development training
- Events designed to immerse you in Queen Mary's research community

For further information about the Doctoral College, please visit [www.learninginstitute.qmul.ac.uk/doctoralcollege/](http://www.learninginstitute.qmul.ac.uk/doctoralcollege/)



## Doctoral College profile : Erica Pani

**Studying:** I am currently studying for a PhD in Economic Geography. Using Higher Education in England as a case study, my PhD reconceptualizes Brenner and Theodore's notion of "emergent neoliberal projects" as "emerging economic geographies". Taking Lee's incisive work on the 'ordinary economy' as its starting point, the PhD seeks to illuminate how neoliberal policies of marketisation are necessarily negotiated, embedded and transformed in and through relational economic geographies. In so doing my work demonstrates how market hegemony can (at best) be understood as a zone moderate compliance in the reproduction of value(s), yet always part of multiple social relations of value that are more complex and diffuse.

**Why Queen Mary:** The School of Geography at Queen Mary is outstanding. I was fortunate enough to do my undergraduate and Master's degrees here, and I am loathe to leave! The intellectual atmosphere and supportive environment are exactly what you need as a student. I really wouldn't want to be anywhere else.

**What did you gain from your time at QM?** As an undergrad and Master's student I gained enormous confidence in my abilities to think and write. I came here as a mature student who did poorly at school, and I graduated with a First and a Distinction. From a personal perspective I feel I have grown from my time here. I feel very fortunate.

**Plans for the next five years:** The next stage for me is a Post Doc. I would like to take my work on economic geographies forward with colleagues both in Planning and the Global South. Then I may retire for a nice cup of tea!



**The Faculty of Science and Engineering comprises the following five Schools:** Biological and Chemical Sciences; Electronic Engineering and Computer Science; Engineering and Materials Science; Mathematical Sciences; and Physics and Astronomy

**The Faculty of Humanities and Social Sciences comprises the following eight Schools:** Business Management; Economics and Finance; English and Drama; Geography; History; Laws; Languages, Linguistics and Film; Politics and International Relations

**The School of Medicine and Dentistry is divided into six Institutes each containing a series of Research Centres. These Institutes are:** Blizard Institute, Barts Cancer Institute, Institute of Dentistry, Institute of Health Sciences Education, William Harvey Research Institute, Wolfson Institute of Preventative Medicine

**For further information contact:**  
**UK Student Recruitment**  
**Queen Mary University of London**  
**Mile End Road, London E1 4NS**  
**email: [ukstudentrecruitment@qmul.ac.uk](mailto:ukstudentrecruitment@qmul.ac.uk)**

**How to find us: [www.qmul.ac.uk/about/campus/mileend/index.html](http://www.qmul.ac.uk/about/campus/mileend/index.html)**

**[www.qmul.ac.uk/postgraduate](http://www.qmul.ac.uk/postgraduate)**

### **Recognised research excellence and innovation**

- Placed in the top 110 universities in the world and 13th in the UK in the latest *Times Higher Education World University Rankings*
- Latest *QS World University Rankings* places Queen Mary in 98th position globally and 19th in the UK.

### **Exceptional learning environment**

- Integrated and secure living and studying environment
- Over £250m invested in new facilities over last five years
- Three main libraries including dedicated research postgraduate reading room in the recently refurbished Library at Mile End Campus
- Award-winning 2,000-bed Student Village

### **Funding and Careers Support**

- Dedicated careers support service
- Queen Mary is consistently in the top fifteen of UK universities for graduate starting salaries (*The Sunday Times*)

Any section of this publication is available upon request in accessible formats (large print, audio, etc.). For further information and assistance, please contact:  
Diversity Specialist, [hr-equality@qmul.ac.uk](mailto:hr-equality@qmul.ac.uk),  
020 7882 5585